



Find us on 

Clarence community news

JANUARY 2018

INSIDE



Offering a helping hand



Website to entice visitors



Building a healthy Clarence



Children teach us a big lesson

Time to take the plunge



CLEAR your calendars – once again April will be filled with events as part of the **plunge** Art and Culture festival.

For the past five years Clarence Valley businesses, artists, performers, film makers, musicians, galleries and more have rallied to create events for our community and visitors to join the wonderful creative talent and culture we have here in the Clarence.

Did you know the Northern Rivers has the highest population of arts workers per capita in the nation?

Keep an eye out for festival favourites like the

workshops at venues like the Iluka Emporium, Cowper Art Gallery and Studio, Ferry Park Gallery and the Grafton Regional gallery.

This year the Coldstream Gallery in Ulmarra will host champagne Sundays where you can come and view some of our wonderful local art and meet the artists.

Plus Yamba favourites Island Collective and the newly-opened Yamba Art Space will be part of the program.

And this year we are bringing local art to you with weekend art markets where you can pick up original pieces to add to or start your

collections or just to bling up your walls.

Keep your ear to the ground for music events at venues and cafes right across the Clarence.

After two fantastic years at Eatonsville Hall we will continue the folk stomping tradition with the Scottish Folk Band Breabach as part of the Woodford Small Halls tour – you won't be able to sit still.

The full **plunge** program will be available at cafes, libraries, galleries and other locations from mid February and an online version will be at www.clarence.nsw.gov.au/plunge as soon as it is published.

clarence
VALLEY COUNCIL

Mayoral message



IT'S always a good feeling when the State Government starts handing out money for projects in the Clarence Valley, so it was very pleasing to get something of an early Christmas present for four separate projects at the end of 2017.

The biggest of these was the announcement of \$500,000 for the redevelopment of Jacaranda Park in Grafton.

This is a fantastic project and one that has been in the consultation and planning stages for many months.

This will be a great facility and one on which we have already received fantastic feedback.

I can't wait for work to get underway.

The next was the redevelopment of the Yamba sports complex, which is in line to get \$355,000 in order to meet the needs of the growing Yamba population.

A project to improve lighting at Rushforth Park in South Grafton was offered \$300,000 and the extension of the Iluka bike path is to get \$177,000.

In all, these sporting and community facilities are to receive more than \$1.3 million.

One of the important messages to come from these funding announcements is the importance of having all the planning done.

The State was looking for projects that could start quickly and having all our planning in place meant we could submit multiple projects for consideration.

* * *

I HOPE you had the opportunity over the festive season to catch up with family and friends and to have a decent break.

The coming 12 months is going to be another big one for the Clarence Valley and council, and we look forward to working with you to make this the best place it can be.

Jim Simmons
Mayor

Restorative care program starts



CLARENCE Care + Support has introduced an early intervention program to help maintain the health, independence and general wellbeing of participants, and it is already bringing benefits.

Mrs Lorraine Murphy was recommended for a short-term restorative care program by a local assessment service and was able to get specialised physiotherapy programs that improve her ability to move around her house and helped her get around safely in her community again.

Mrs Murphy said she was happy with the improvement she had accomplished and the program helped her stay focused on what she needed to do.

"It has not only increased the strength in my lower limbs but I feel much more confident walking around my house and in town," she said.

Under the package Mrs Murphy was able to attend hydrotherapy classes, have a specialised physiotherapy plan and get some home modifications to help with her access around her home and into the garden.



Mrs Murphy demonstrating one of her exercise routines.

To find out more about program and eligibility criteria, call Clarence Care + Support on 6645 0400.

Does your project need a helping hand?



IT'S a new year and time for community organisations to start thinking about funding opportunities.

Grants can be scary and seem too hard to even consider, but here are a few simple tips:

- Identify and prioritise your short- and long-term needs eg. a new kitchen, volunteer training, a computer
- Research funding bodies, their priorities and sign up to eNewsletters
- Ask for help from organisation members/ friends and family
- Make a one-on-one appointment with our community grants officer, Sammy Lovejoy, on 6643 0200 or email sammy.lovejoy@clarence.nsw.gov.au

Warning issued on unauthorised building

PROPERTY owners of the Clarence Valley are reminded they need to get development consent before converting a building to a dwelling.

In a number of instances industrial buildings have been converted for residential use, dwellings converted into flats and sheds converted into dwellings without planning approval.

Residential accommodation is in short supply, but there is still a legal requirement to get planning approval and meet national health and safety standards designed to keep the community safe.

These standards include the need for fire rated construction between dwellings; bushfire and flood protection standards and measures that protect community health and amenity.

In 2016 council amended the Clarence Valley Local Environmental Plan to allow temporary workforce accommodation and relaxed the requirement for second dwellings on rural properties to be attached to the main dwelling.

Where planning approval has not been provided council can issue demolition orders, orders to cease residential use and require the building to be restored to the approved use.

Council can issue significant infringement notices and take court action.

Council staff are available to provide advice to any person planning a development in the valley.

Contact council's duty officer on 6643 0200 or email council@clarence.nsw.gov.au for information. Fact sheets are also available at www.clarence.nsw.gov.au.

For all the latest news, a weekly information column is available at www.clarence.nsw.gov.au/weeklyad

General manager's comment



THERE is little that will tell you more about what is important to an organisation than its values statement.

Those values set the parameters for just about everything it does, from how it treats its customers and staff to how it performs its duties.

They are the guiding principles that define an organisation's culture, what it stands for and what it believes in.

Council has had a set of published values for many years, but there was a feeling - particularly among staff - they needed to be defined more clearly and did not accurately reflect council's role in the community, so there has been a concerted effort to make them more relevant and prominent.

We have now adopted what we believe to be a more accurate description of our values and members of the public are likely to see more of them during the next 12 months.

Expect to see the acronym **STRIVE** on council vehicles, buildings and other facilities managed by council.

Below is what it represents and is our commitment to the community.

Safe - We will have a safety focused workplace culture to ensure the wellbeing of our staff and the community.

Teamwork - We will work together as one council towards shared goals and for the greater good of the community.

Respect - We will be inclusive, treat people with courtesy and fairness, and ensure each individual is valued and heard.

Integrity - We will behave in a way that is honest, open, and transparent. We will take responsibility for our actions and strive for excellence.

Value - We will deliver services efficiently, effectively and in an environmentally and financially sustainable manner.

Engagement - We will engage with our staff and community to inform our decision making, and create awareness of our activities. We want this council to be an employer of choice - one that has the confidence and support of the community. Changes to culture take time, but we have taken the first steps and are confident we are on the right track.

Ashley Lindsay
General Manager

Showcasing the best of our Clarence Valley



The Wooli Wooli River, pictured, is featured on a new website promoting the Clarence Valley to visitors. The website, www.myclarencevalley.com, was launched in late November last year.

A NEW website promoting the Clarence Valley to the rest of the world is now up and running.

The site, www.myclarencevalley.com contains all the information a visitor might need to plan and prepare for their next visit to the Clarence Valley in a clear and accessible new format.

It is designed to be mobile-first friendly, which is an important factor for future Google capability,

and includes an interactive map on the "Information" and "Inspiration" sides of the site for ease of access.

It also consists of many great new features, such as "Stories" with regular articles about things to do in the Clarence Valley, "Galleries" page with directional information to the locations of the images and "Get Social".

Building a healthy Clarence community

AS part of a collaborative approach to improving mental health in the Clarence Valley, the New School of Arts, funded by NSW Health and the Ride for Youth have opened two pop up hubs.

The Grafton pop-up hub is at 116B Prince Street open Tuesday to Friday from noon to 7pm and on Saturday from 9am to 4pm.

The Yamba pop-up hub is at the Treelands Drive Community Centre and is open on Thursday and Friday from noon to 7pm.

These pop-up hub will provide:

- Access to good quality health, well-being and service information
- Supported referral to local services and programs
- Safe community spaces to hold meetings and support groups
- Community activities and events to enhance community connections.

Anyone and everyone is welcome.



IF YOU NEED HELP OR SOMEONE TO TALK TO:

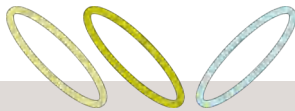
Lifeline	13 11 14
Suicide Call Back Service	1300 659 467
Kids Helpline	1800 551 800
MensLine Australia	1300 789 978
ehelpspace	1800 650 890
beyondblue	1300 224 636
Mental Health Line	1800 011 511

IN AN EMERGENCY CALL 000

GET INVOLVED

ourhealthyclarence@nsoa.org.au

For all the latest news, a weekly information column is available at www.clarence.nsw.gov.au/weeklyad



Contacting your councillors

JIM SIMMONS, MAYOR
P: 6643 0200, 6645 3083
E: jim.simmons@clarencenew.gov.au



JASON KINGSLEY, DEPUTY MAYOR
M: 0422 828 156
E: jason.kingsley@clarencenew.gov.au



RICHIE WILLIAMSON
M: 0427 457 382
E: richie.williamson@clarencenew.gov.au



PETER ELLEM
M: 0437 303 875
E: peter.ellem@clarencenew.gov.au



ANDREW BAKER
E: andrew.baker@clarencenew.gov.au



ARTHUR LYSAUGHT
M: 0418 662 818
E: arthur.lysaught@clarencenew.gov.au



GREG CLANCY
M: 0429 601 960
E: greg.clancy@clarencenew.gov.au



DEBRAH NOVAK
P: 0402 404 606
E: debrah.novak@clarencenew.gov.au



KAREN TOMS
M: 0403 195 178
E: karen.toms@clarencenew.gov.au



Connect with your council

CUSTOMER SERVICE

for all inquiries: 6643 0200

AFTER HOURS EMERGENCY

CONTACT: 6626 6858

POSTAL ADDRESS: Locked Bag 23, Grafton, 2460.

FACSIMILE: 6642 7647

STREET ADDRESS:

Grafton office – 2 Prince St

Maclean office – 50 River St

EMAIL: council@clarencenew.gov.au

WEB: www.clarencenew.gov.au

clarencenew
VALLEY COUNCIL

Alice and Will turn waste into art

ALICE and Will have been picking up litter from their local beaches in Yamba for more than a year now and have been astonished by the range of things they have found.

Rather than putting it all in their recycling or rubbish bin, they decided to create something meaningful to share with visitors to their house.

Resourceful mum Jess found a discarded piece of ply in the kerbside cleanup, and before long they had the makings of this fabulous three-dimensional, waste-to-art masterpiece.

Plastic makes its way into the ocean in all sorts of ways but most of it comes from land.

Smaller pieces are often discarded as insignificant but it is the smallest pieces that are causing the most harm in our rivers and our oceans.

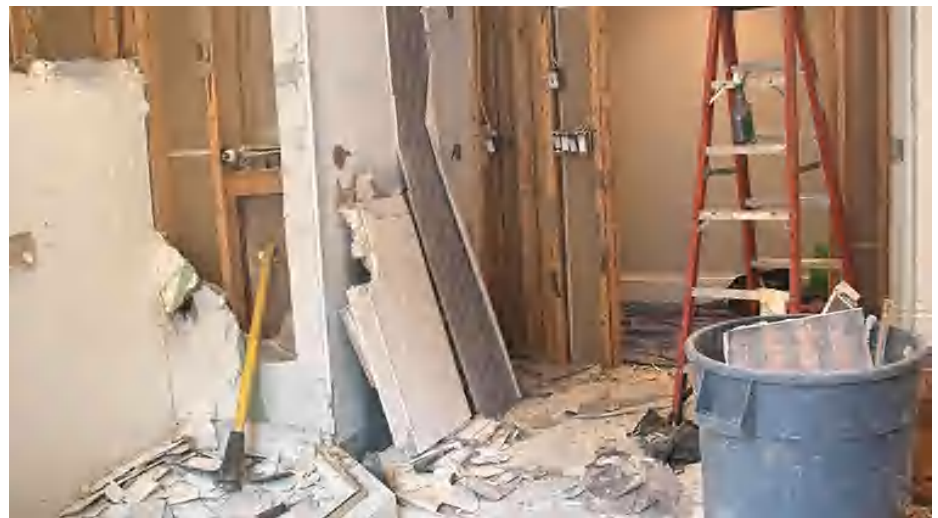
Preventing the problem can be as simple as saying no to single-use plastics like shopping bags, straws and bottled water, and ensuring you take your litter with you when you leave the park or beach.



The Take 3 initiative encourages supporters to take three pieces of rubbish away whenever they leave their favourite place. In little time supporters like Alice and Will have made a huge difference to the places they visit. If you'd like to know more visit www.take3.org

Don't forget Clean Up Australia Day is March 4 this year. If you would like to register a group or join with another in this 29th year of Aussies cleaning up Australia, go to www.cleanup.org

Keep safe during that renovation project



Preparing for that home renovation project? Make sure you check for hazardous materials, including asbestos. Council has subsidised asbestos testing kits, removal kits and personal protective equipment available.

WITH one in three Australian homes containing asbestos it is important for householders to be aware of the potential risks when undertaking renovations.

Asbestos products were used in a wide range of building products including fibro sheeting, roof shingles and guttering, vinyl floor covering and water drainage and flue pipes. All houses built before 1987 in Australia potentially contain asbestos products.

Council currently has asbestos testing kits available for householders wanting to establish whether products in their home contain asbestos.

Instructions on how to safely remove a sample and bags to enclose the sample are included in the kit.

The householder kits are available from council's Maclean and Grafton customer service centres, and from the Grafton Regional Landfill. Kits are subsidised by council and cost residents \$20, which includes a lab report. For further information on the kits visit www.newaste.org/asbestos/ or contact council on 6643 0200.

Also available for \$20 are asbestos removal kits that contain personal protective equipment (PPE) and disposal bags.

For all the latest news, a weekly information column is available at www.clarencenew.gov.au/weeklyad