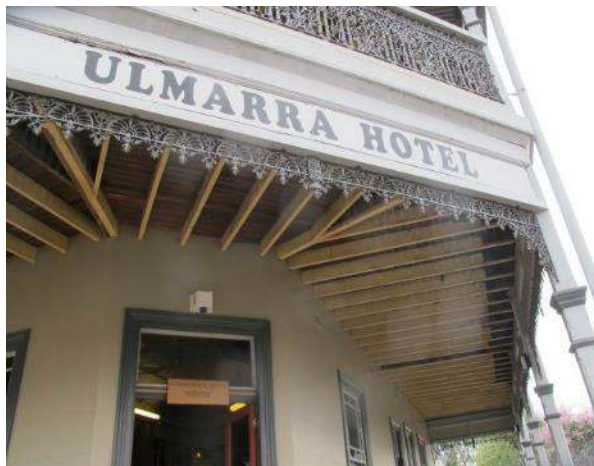


Sydney 46 Gale Road
Maroubra, NSW, 2035
Northern 2 Queen St
NSW Murwillumbah, NSW
P.O. Box 42 Condong, 2484
A.B.N. 83 082 211 498

General Inquiries +61 2 9568 5800
www.cosmosarch.com



Former Ulmarra and Nymboida Shires



COMMUNITY BASED HERITAGE STUDY Volume 1 Management

Former Ulmarra and Nymboida Shire Areas
Now Clarence Valley Council

May 2018, Updated 2019 and 2020

Former Ulmarra and Nymboida Shires

COMMUNITY BASED HERITAGE STUDY

Volume 1 Management Report

Prepared for:

Clarence Valley Council

By:

Gina Scheer, Cosmos Archaeology Pty Ltd

May 2018, updated February 2020

Cosmos Archaeology Job Number J17/25 – Reports presented:

<i>Draft</i>	<i>Date</i>	<i>Prepared by</i>	<i>Approved by</i>	<i>Comments</i>
1A	03.05.2018	G. Scheer Cosmos Archaeology Pty Ltd	D. Wray Clarence Valley Council	Provided in line with Office of Environment and Heritage funding timeframe
1B	06.08.2018	G. Scheer Cosmos Archaeology Pty Ltd	D. Wray Clarence Valley Council	Including feedback from D. Wray review
1C	19.12.2018	G. Scheer Cosmos Archaeology Pty Ltd	D. Wray Clarence Valley Council	Including feedback from D. Wray review and community meeting information
1D	21.12.2018	G. Scheer Cosmos Archaeology Pty Ltd	D. Wray Clarence Valley Council	Including feedback from D. Wray review
1E	30.01.2018	M. Bendell Cosmos Archaeology Pty Ltd	D. Wray Clarence Valley Council	Including feedback from D. Wray review
1F	11.02.2018	G. Scheer Cosmos Archaeology Pty Ltd	D. Wray Clarence Valley Council	Including feedback from D. Wray review
1G	10.04.2019 & 21.10.2019	G. Scheer	D. Wray Clarence Valley Council	Updated in accordance with numbers of items & changes to SHI sheets.
1H	13.02.2020	G. Scheer Virtus Heritage Pty Ltd	D. Wray Clarence Valley Council	Updated with changes to SHI sheet
Adopted by Clarence Valley Council Resolution of 25 February 2020.				

Cover Image: Ulmarra Hotel, Seelands Community Hall, Glenreagh General Store and main street, Woolli former boat ramp – photographs taken during site inspections October 2017 – January 2018 Gina Scheer

Executive Summary

This Former Ulmarra and Nymboida Shires Community Based Heritage Study is the first that draws together previous historical information and heritage information for these former Shires. This is a comprehensive Heritage Study which identifies, assesses and recommends places of heritage significance within the study area for inclusion and protection on the Clarence Valley Local Environmental Plan. The project commenced in late 2017 and will be completed in 2019.

The former Ulmarra and Nymboida Shires Community Based Heritage Study, conducted from 2017 to 2019, is in two volumes as follows:

- Volume 1 Management Report (this report)
- Volume 2 Former Ulmarra and Nymboida Shire Thematic History, author Dan Tuck, historian (separate report submitted)

This report provides the findings and recommendations of the Study. It should be read in conjunction with Volume Two to better appreciate the history of development and local context for each proposed heritage item. The Study was coordinated for Clarence Valley Council by Gina Scheer, BA Hons Archaeology M. Heritage Conservation, and involved input and contributions from former Shire Councillors, Council staff and community members.

The Community Based Heritage Study (the Heritage Study) has been conducted in accordance with NSW Heritage Office guidelines for community-based heritage studies and made possible by funding from this body to Clarence Valley Council. The Study would not have been possible without the commitment and ongoing support of the Council and its project manager and information received from interested members of the local communities.

This Study makes recommendations for the inclusion of 114 individual items plus a total of six heritage conservation areas from the former Nymboida and Ulmarra Shires. Of these items, 22 have been listed on a number of State agency Section 170 Conservation and Heritage Registers or have been listed on the former Shire LEPs. Within this number there are recommendations made for listing five places assigned State heritage significance.

The individual items recommended in this Study for Clarence Valley Council have been listed with their details and photographs on the Office of Environment and Heritage State Heritage Inventory database. Once Clarence Valley Council has approved the heritage items, their information will be made freely available via the following website:
<https://www.environment.nsw.gov.au/heritageapp/heritagesearch.aspx>

Abbreviations used throughout:

CBHS	Community Based Heritage Study
Council	Clarence Valley Council
DA	Development Application
DCP	Development Control Plan
HCA	Heritage Conservation Area
LEP	Local Environmental Plan
LGA	Local Government Area
NSW	New South Wales
SHI	State Heritage Inventory database
SHR	State Heritage Register

TABLE OF CONTENTS

Executive Summary	ii
1.0 INTRODUCTION	1
1.1 Background.....	1
1.2 Study Area.....	1
1.2.1 European Settlement.....	3
1.3 Aims of the former Ulmarra and Nymboida Shire Community based heritage Study3	
1.3.1 Indigenous Recognition.....	4
1.4 Authorship and Reporting.....	4
1.5 Acknowledgements.....	4
1.5.1 Commissioning and conducting the thematic history.....	5
1.6 Limitations of the Study.....	5
2 HERITAGE STUDY METHODOLOGY AND OUTCOMES	6
2.1 Methodology.....	6
2.2 Outcomes.....	7
2.3 Information collection and review.....	8
2.4 Engaging the community.....	10
2.4.1 Advising and involving the community.....	10
2.5 Analysis and Recommendations.....	11
2.5.1 Changes to the Earlier Draft Report.....	11
3 ASSESSING SIGNIFICANCE	12
3.1 Introduction.....	12
3.2 Potential Individual Heritage Items.....	13
3.2.1 <i>Condition Reporting</i>	14
3.3 State heritage nominations.....	14
3.3.1 Nymboida Hydro-Electric Power Station.....	14
3.3.2 Ramornie Meatworks site, 1865-1924.....	14
3.3.3 Ulmarra Court house and Ulmarra Police Station / Official Residence.....	15
3.3.4 Bawden Bridge.....	15
3.3.5 Briner Bridge over Upper Coldstream River, Tucabia.....	15
3.3.6 Former Glenreagh Railway Station Complex.....	16
3.4 Heritage Conservation Areas.....	17
4 MANAGEMENT ISSUES	19
4.1 Social and community responsibilities.....	19
4.2 Strategic and town planning.....	19
4.3 Economic and cultural responsibilities.....	20
4.4 Location, Context and Use - Tourism.....	20
4.4.1 Locals and Use.....	22
5 RECOMMENDATIONS AND NEXT STEPS	24
5.1 Next Steps.....	24

5.2	Site Specific Recommendations.....	25
5.2.1	Cemeteries	25
ANNEX A – LIST OF POTENTIAL (AND EXISTING) HERITAGE ITEMS FOR CVC		1
ANNEX B – ULMARRA HERITAGE BROCHURE		13
ANNEX C – COMMUNITY MEETINGS AND HERITAGE WORKING GROUP PLUS COUNCIL ADVERTISING		15
ANNEX D – PROCESS FOR A HERITAGE STUDY		23
ANNEX E – RECOMMENDED CONSERVATION AREA MAPS.....		25

1.0 INTRODUCTION

1.1 Background

Clarence Valley Council amalgamated in 2004 and at that time the former Pristine Waters Council became part of this body. Pristine Waters Council was itself a relatively new Council area, as the Ulmarra Shire Council and Nymboida Shire Council became Pristine Waters Council in July 2000.

The former Ulmarra and Nymboida Shire areas comprise the southern part of the Clarence Valley Council local government area, as shown on the maps (Figure 1). Although each former Shire had information from earlier years regarding historical and heritage information, they had not yet been the subject of a community based heritage study. The need for a heritage study for both former Shires was identified in the Clarence Valley Heritage Strategy adopted in 2013.

There are 18 heritage items and one Conservation Area listed within the study area on the Clarence Valley Council Schedule 5, the heritage schedule for the *Clarence Valley Local Environmental Plan 2011*. These listed items arose from the former North Coast Regional Environmental Plan listings which had been made in 1988.

In July 2017, Clarence Valley Council sought tenders to undertake the Heritage Study for the former Shires. The Office of Environment and Heritage had agreed to fund the project with support from Clarence Valley Council (Council). Council expects the Heritage Study to result in the identification of places of heritage significance which are considered important to local communities.

The items identified within this report and for which a state heritage inventory form has been prepared¹ are often places that the local community have recommended or provided information for. Inclusion as heritage items will ensure their protection and their appreciation by the local community and the many visitors to these area. It must be noted that tourism is a big drawcard for the area and the retention of heritage items and heritage streetscapes, such as in heritage conservation areas, is a sure method for ensuring further visitor numbers.

1.2 Study Area

The study area is actually two different geographical areas, separated by Grafton. The former Ulmarra Shire lies to the north and east of Grafton and the former Nymboida Shire is located to the south and west of Grafton. The regions are shown on the maps at Figure 1.

The study area includes the New England Plateau to the west and the river plains, coastal hinterland, headlands and beaches of the Mid to Far North Coast. The area features parts of the largest of the North Coast's notable big rivers, the Clarence, as well as the Mann, Nymboida and Orara, and includes a vast range of landscapes and landforms. The northernmost notable settlement is Cowper; the southernmost is Hernani. The westernmost locality is the ranges-tablelands former township of Newton Boyd and the easternmost the small river-coast settlement of Sandon.

¹ Each item has been listed on the Office of Environment and Heritage web-based State Heritage Inventory database.



Figure 1: Above, overall map of Clarence Valley Council local government area and below, the two former shires comprise most of the area.

1.2.1 European Settlement

The history of the areas is outlined in the companion volume to this study - Volume 2 Former Ulmarra and Nymboida Shire Thematic History. To summarise, the area of Ulmarra was settled in the 1850s and the town established in 1870. A petition asking for the Municipal District of Ulmarra was published in the Government Gazette on 23 June 1871. It requested incorporation of an area of about 45 square miles with a population over 1,000.² The town of Ulmarra was founded on the banks of the Clarence River and the towns and villages of the former shire extend to the coastal towns of Woolli, Minnie Water, Diggers Camp and Sandon. The historical industries of timber getting and dairy farming have also included fishing and mining. The coastal area of Ulmarra also incorporates the Yuraygir National Park and many acres of native bush. The area today is still dominated by agriculture, with large pastoral properties, although recreation and tourism are emerging sources of income for the region.

Nymboida, the village was set aside from Nymboida, the pastoral property, in 1869 which is when it was surveyed³. Gregory Blaxland (son of the explorer) had established the pastoral property of Nymboida in the 1840s. Dairying and agriculture continued and a public school opened at Nymboida in 1879. The 'wool road' through Nymboida from Armidale to Grafton helped establish the village. It became a service stop for the Cobb and Co stage coaches, bullock teams, timber cutters, graziers and other European pioneers. The area also incorporated the former gold mining towns of Dalmorton and Glenreagh. Former Nymboida Shire is a steeper landscape than Ulmarra and included many creeks, as well as gold and coal mining. A timber festival is celebrated annually in Glenreagh. It is also agriculture and tourism that are the main sources of income in the region.

1.3 Aims of the former Ulmarra and Nymboida Shire Community based heritage Study

This Heritage Study draws on the valuable historical information available within the community regarding identification of items and in some cases further information on their development. One of the aims of this study was to bring people together in the community to discuss heritage and raise their awareness of heritage conservation and the resources available at Council to assist with conservation.

The following information taken from the NSW Guidelines for a Community Based Heritage Study, is relevant for this project:

A Heritage Study investigates the history of a local government area. It identifies then assesses items and places of heritage significance that demonstrate this history. The study explains why the items are significant and recommends ways to manage and conserve this significance.

The study ensures that the community is not only consulted about its heritage, but also that the community is actively involved in researching and nominating items and places of heritage significance, and in considering recommendations for their management and promotion.

The methodology is based on the premise that the community holds the necessary skills and knowledge when guided by an experienced heritage consultant. This might or might not be so for every community. However, the process does assist in promoting the community's sense of historical and current identity and ensuring its beginnings, its present and its potential are known and can be explored and celebrated. This greatly assists a sense of ownership and pride regarding heritage

² NSW State Records and Archives, Municipal District of Ulmarra, <https://www.records.nsw.gov.au/organisation/189>

³ The Centenary of Nymboida, 1879-1979, Pap Book Co Pty Ltd., 15.

*assets and involvement in their future management. In addition, the information assists Council in protecting heritage, developing tourism strategies, and in devising education programmes to ensure the community's heritage assets become better known, understood and appreciated.*⁴

1.3.1 Indigenous Recognition

While Aboriginal heritage is not directly within the scope of this Study, the traditional language groups, ownership and occupation of the former Ulmarra and Nymboida Shire areas by the Bandjalang, Gumbaingirr and Yaegl people is acknowledged. The Aboriginal history is an important factor for the former Shires and is included in the separate thematic history volume. For this Community based heritage study, if Aboriginal sites are identified as part of the community consultation process, they may be included as heritage items but are subject to the endorsement of the relevant local Aboriginal Land Council.

It is also worth noting here that Clarence Valley Council prepared an Aboriginal Heritage Study for the whole LGA which was adopted by Council on 14 April 2015. The study was prepared in consultation with members of the Clarence Valley local Aboriginal communities. The Study included a thematic history of local Aboriginal occupation, identified publicly recognised places of Aboriginal significance, and contained strategies in relation to the protection of Aboriginal cultural heritage.

1.4 Authorship and Reporting

This report is Volume I Project Manager's Report. It introduces the Study, provides its background and methodology, and provides the findings and recommendations. Gina Scheer, Heritage Consultant with Cosmos Archaeology Pty Ltd is the author and project coordinator. This report includes the list of existing and potential heritage items. Each potential item has been entered on to the Office of Environment and Heritage State Heritage Inventory database.

Volume II is a Thematic History for the Community Based Heritage Study. That report provides the historic context, based around relevant identified local and, or, State historical themes.

1.5 Acknowledgements

Deborah Wray, Senior Strategic Planner at Clarence Valley Council

Scott Lenton, Environmental Planning Coordinator at Clarence Valley Council

Dan Tuck, archaeologist and historian

Local community members:

Roy Bowling former Ulmarra Shire Councillor, Tucabia,

Leone Roberts, former Ulmarra Shire Councillor, Eatonsville

Bessie Webb, local historian, Glenreagh

Brian Leedham, railway historian Glenreagh

Kevin Watkins, local historian, Ulmarra

⁴ State of NSW and Office of Environment and Heritage, Heritage Branch Community-based Heritage Studies, 1999, revised 2005, 2007, 2013

The contributions made to this study by members of the local communities who attended the community meetings is also gratefully acknowledged.

1.5.1 Commissioning and conducting the thematic history

In late 2018, the Project Manager commissioned the preparation of a thematic history from the local archaeologist and historian Dan Tuck. It is important to note that in the Heritage Study methodology, the thematic history is not expected to be a definitive history or an attempt to record history in a conventional way. Rather, in line with the NSW Heritage Office guidelines for community based heritage studies, it analyses the history of the area by using previously identified historic themes to inform the process of identifying and assessing heritage places. Dan has looked at each former Shire individually regarding specific industries, in order to draw together the thematic information. Dan also has previous experience recording the history and archaeology of the Yuraygir National Park and for Dalmorton.

1.6 Limitations of the Study

The vast study area and its rural nature are limitations for this study. The scope and budget available are also limitations for the study.

These limitations mean that travelling to each and every area is not achievable within the time frame and the budget. Much of the region is rugged landscape and also includes large rural properties.

This study has utilised the historical resources within previously written histories and from first-hand accounts from family descendants or long term members of the local communities. In addition, publications within the Clarence River Historical Society, Grafton Library, or provided by Council have been consulted.

However, many of the historical properties noted to be potential heritage items are private properties. There are gaps in our information, and, without an invitation to enter these properties, there will be historical rural properties within the region that will not be included within this Heritage Study.

2 HERITAGE STUDY METHODOLOGY AND OUTCOMES

The study commenced in October 2017 with Clarence Valley Council appointing a project manager and a historian to undertake the project. The Heritage Study will be publically available in 2019 and completed in 2020.

2.1 Methodology

The steps to successfully complete this project include the following, which will be completed in 2019 and 2020.

The tasks are split between the project manager and the historian. In addition, Clarence Valley Council's Strategic Planner has been involved for with this Heritage Study and assisted the project manager in completion of initial surveys and community meetings. The project manager's tasks have included the following:

- Liaison with the communities and council, meeting with local interested residents who can provide the necessary history and information for each region
- Facilitate community workshops and initiate the community heritage working group
- Assess heritage significance in line with OEH's requirements and prepare, or review and update, statements of significance
- Use the State Heritage Inventory Database software to prepare, or review and update, heritage data forms for the significant heritage items
- Manage the project to complete the study on time and on budget

Council's Strategic Planner has arranged:

- Local newspaper advertisements for community meetings
- Publicity for the community based heritage study through articles in the local press and for individual property owners through the rates notices.
- Updates to Council's website specifically for the community based heritage study in order to encourage information sharing across the community and to help identify potential item.
- Organisation of venues and materials for meetings.
- Assistance with field work and site inspections.
- Research of Council records and other sources

To complete the project Council and/or Council's Strategic Planner will need to:

- Prepare policy recommendations and implementation strategies for managing and promoting heritage in the area
- Liaise with, and make presentations to, council staff, management and councillors to ensure awareness of the purpose and findings of this study
- Arrange for the management and promotion of heritage conservation at the local level, including the local environmental plans and DCP process based on an understanding of the Environmental Planning and Assessment Act 1979 and the Heritage Act 1977 (NSW) contexts and requirements

Tasks for the historian to successfully complete the project have involved the following:

- Review historical information sourced and provided from the heritage study as well as other archival sources
- Provide a historical account of the patterns of Aboriginal land use, colonial settlement including Aboriginal contributions, and historical events and processes
- Include a chronology – so the history can be used in future research or for other purposes after the study is complete
- Identify and relate the historical account to relevant national, state and local historical themes and identify gaps in historical themes
- Assist the project manager and heritage working group
- Review and provide advice on site-specific histories for potential heritage items identified in this study, if requested by the project manager and heritage working group; attend a community workshop to identify potential heritage items and review existing heritage items which best illustrate the key themes, events and processes
- Assist in identifying historical sources beyond the local area and/or assist in fieldwork with the project manager and heritage working group to understand the historical context
- Prepare a draft thematic local history
- Review and incorporate community, council, project manager, and heritage working group comments into the final thematic local history.

2.2 Outcomes

The outcomes of the completed Heritage Study for former Nymboida and Ulmarra Shires will include a greater awareness of the heritage within these areas at a local community level, at Council level and for the wider area. Council's website has already been updated with information relating to the study and information will continue to be updated.

The Heritage Study will also be presented in two volumes to Council, as noted previously. The two volumes are presented as electronic copies, which will be uploaded to Council's website. They will contain the following information:

- Research and fieldwork describing the identified heritage items (this report, Volume 1)
- The thematic history of the area (Volume 2, From the Tablelands to the Sea, A Contextual History Former Pristine Waters Council Area [Ulmarra & Nymboida Shires]: Clarence Valley Council LGA)

The inventory sheets for each proposed heritage item and conservation areas have been completed, using the *State Heritage Inventory Web Application* provided by the Office of Environment and Heritage NSW Heritage Division. The use of paper heritage inventory sheets (SHI forms) have been changed to this web-based application and were undertaken using this direct entry process. The *State Heritage Inventory Web Application* is an Internet based information system for inventory and management of cultural heritage. It is provided for Local Councils and State Government agencies, heritage professionals, etc., who are conducting and managing information collected through heritage studies, Local Environmental Plans and s.170 Heritage and Conservation Registers. The statutory information entered and submitted to the Office of Environment and Heritage NSW Heritage Division will become publicly available via the State Heritage Inventory, once the approvals process has been completed.

This heritage study provides the necessary management information to support heritage outcomes for Clarence Valley Council. The outcomes address social and community responsibilities, strategic and town planning, and economic and cultural responsibilities.

In particular, the following specific initiatives are highlighted by this Heritage Study:

- The community's sense of identity – including its beginnings, the present and its potential. This study and the information contained on the inventory sheets can be used to welcome new residents into a specific local community
- A range of special heritage places which council can support and promote to visitors
- Heritage tourism strategies that can generate local business and greater numbers of visitors
- Local community engagement and a sense of ownership of the area's heritage assets
- Education programs to raise awareness about the community's heritage assets, for better understanding and appreciation. Council can work with local area historical societies and museums, and schools can access web based heritage information
- Future management of heritage items by private owners and Council, where appropriate
- This information will feed into Council's cultural plan; a cultural plan is recommended in order to provide a framework to manage cultural built assets, cultural organisations and other cultural resources within the community.

2.3 Information collection and review

The project manager gathered relevant background information from a range of sources, such as the NSW Heritage Division of the Office of Environment and Heritage State Heritage Inventory (SHI), National Parks and Wildlife and information held by Clarence Valley Council. This was supplemented by some information from the previous Pristine Waters Councils, information from the Clarence River Historical Society and local history publications.

As this community survey work was undertaken, entries were made onto the NSW State Heritage Inventory database. As the direct entry process is very slow, entries were also made into a separate database (using Filemaker Pro) maintained by the consultant. Each potential heritage item has a SHI form which is completed as per the assessment criteria provided by the NSW Heritage Division.

Clarence Valley Council and the project manager gathered data relating to historic places and to items of potential heritage significance. The information collection stage involved undertaking site visits and inspections of publically accessible areas. For Tucabia, Eatonsville, Ramornie, Seelands and Glenreagh, tours led by the local historical expert were invaluable in highlighting areas of heritage significance.

To better understand the scope of the study and the large geographical areas it covers, there are nine locations identified within the former two shires, as follows:

Area 1: Ulmarra

This historic township is significant as a 19th century river port. The township located on the southern banks of the Clarence River, just northeast of Grafton, is one of the oldest settlements within the former Shire. It retains much of the 19th and 20th century building stock. As well as numbers of individual buildings relating to law and order, agriculture, and

commerce and religion, the township is currently designated as a statutory heritage conservation area in the Clarence Valley LEP 2011.

Area 2: Tucabia and Coldstream

The village of Tucabia and the hamlet of Coldstream are located east of Ulmarra, around the banks of the Coldstream River. Individual heritage items relate to the Briner Bridge, an existing heritage item for Roads and Maritime Services. Potential heritage items relate to schools and farming.

Area 3: Seelands and Eatonsville

These villages are located northwest of Grafton, on the banks of the Clarence River. Their settlement pattern reflects the river use and pastoral properties. Potential heritage items relate to schools and halls and are also historically and, in some cases, physically related to Ramornie.

Area 4: Ramornie

The region of Ramornie contains two significant heritage items, the former Ramornie Meatworks site and Ramornie Homestead and barn. This area is located just outside of Grafton on the Orara River. It is a rural setting of rolling hills and pastures, and the former settlement of Ramornie is only marked today by a cenotaph and pine trees located on the northern side of the Gwydir Highway and by a boiling down vat in the rest area further west on the southern side of the Highway. The historical Meatworks site and former village are archaeological remains.

Area 5: Glenreagh

The township is located on the Orara Way mid-way to Coffs Harbour. Founded for gold mining and developed due to the timber industry, the combination of timber, notably cedar, and the railways result in the former Glenreagh Railway Station complex being the only rail heritage item within this Study. The historical centre contains a good representation of timber and iron vernacular buildings including landmark elements of the School of Arts (incorporating the historical museum), churches and the general store.

Area 6: Coutts Crossing, Nymboida, Tyringham, Dundarribin

This is a large area southwest of Grafton, dominated by hills, forests and the river. Coutts Crossing and Nymboida are both historical settlements. Potential heritage items include churches and schools. Early pastoral properties and former villages are also signified by small grave sites, such as at Tyringham. Tyringham also boasts a history hut, a roadside picnic area with wall mounted historical information. This is worthy of heritage listing.

Area 7: Dalmorton and Buccarumbi

These historical areas south and west of Grafton are now rural landscapes, dotted with pastoral properties and popular with campers and canoeists. The former Buccarumbi Bridge is a fascinating ruin at the campground. This area, as well as the former gold mining town of Dalmorton and its hand hewn road tunnel are notable potential and also existing heritage items.

Area 8: Sandon, Diggers Camp, Minnie Water and Wooli

These small coastal towns are located south of Yamba and bordered to the west by the Yuraygir National Park, which places limits to their future development. Minnie Water historically was known as 'Wire Fence' and Diggers Camp is named for the gold diggers who were the first Europeans to settle there, albeit temporarily. Sandon and Wooli were established as oyster and fishing holiday places and their collections and streetscapes of small historical cabins are the reason for their suggested heritage conservation area listings.

Area 9: Jackadgery and Cowper

Jackadgery is located further west along the Gwydir Highway from Grafton, around the banks of the Mann River. Now primarily rural, it is recognised by its rest area with historical interpretation in the hut, similarly to Tyringham. Cowper village, on the southern banks of the Clarence River is located opposite the village of Brushgrove. Cowper's historic public school and former churches are potential heritage items, as is the Cowper Bus Crash Memorial, one of only a few non war memorials within the study area.

2.4 Engaging the community

To date the project manager has attended meetings with local residents who have shared their historical knowledge and accompanied initial surveys of the areas in Glenreagh, Tucabia, Eatonsville, Ramornie and Seelands in order to familiarise with the area and the historical items and potential heritage items located there. There have also been phone calls and emails from individual local residents who are willing to share their historical information and have enquiries regarding the heritage study. Three community meetings were held - in Tucabia, in Grafton and Nymboida, in order to take the study to the relevant communities across this vast area.

The above areas, it is realised, focus on the larger villages and towns of the former Ulmarra and Nymboida shires. One of the issues for this project is the large area of the total study combined with the predominantly rural character of settlements and properties. There are numbers of historical private properties that were not visited as part of the site visits and surveys.

Clarence Valley Council issued a media release regarding the study, as well as the local newspaper advertisements regarding the community meetings. A newsletter article was posted to each ratepayer in the LGA (see **Annex B**) and the Clarence Valley Council website includes links to the study and seeks further information from the public - <https://www.clarenceconversations.com.au/ulmarra-nymboida-heritage-study> .

2.4.1 Advising and involving the community

Council has publicised the Heritage Study through various means such as a local newspaper article, newsletter and advertisements for the community meetings held in three locations (see **Annex C**). In addition, the Project Manager held a number of meetings with community groups and met at various times with a range of individuals to explain the aims of the Heritage Study and its processes and the role of the community as well as Council.

The advertisement also invited nominations for the heritage working group. Attendees at the various community meetings and separate consultations held between October 2017 and October 2018 resulted in meeting attendance and telephone and email information received from the following local community members:

- A total of four former local Councillors from both Shires
- Members of the Clarence Valley Historical Society
- Local resident / business owner from former Ulmarra Shire
- Local resident and historian from Ulmarra
- Local resident and historian from Glenreagh
- Local resident and railway historian from Glenreagh
- Local resident and historian from former Nymboida Shire
- Local resident from Nymboida Shire

2.5 Analysis and Recommendations

To date, the recommendations for heritage listing have included a review of the small number of heritage items already listed within the region. These existing items include listings on the S170 heritage and conservation registers of Government bodies such as Roads and Maritime Services, Essential Energy and NSW National Parks and Wildlife.

With regard to new items proposed for heritage listing, the information received from Clarence Valley Council and local residents combined with inspections and historical research have produced the list of recommended heritage items. In some cases recommendations are also made to confirm or upgrade the existing heritage listing through the meetings held to date and the above processes, this Study provides a number of management recommendations in relation to the potential heritage items for Clarence Valley Council. Management issues and recommendations are provided in **Sections 4 and 5** of this report.

The Study's recommendations are for 120 items in total which consist of:

- 114 individual items
- 6 heritage conservation areas - 5 new and 1 existing (Ulmarra)

This number does include those items already listed on other heritage registers and in a few cases, some items already listed as heritage items for Clarence Valley Council.

There may be further additions to the former Nymboida and Ulmarra Shire heritage items that are confirmed during the public consultation phase. These items have already been tentatively identified as:

- historical pastoral properties,
- local industrial places, such as a wrecked sugar cane barge in the Clarence River at Cowper and the historical ill-fated Belmore sugar mill at Ulmarra
- river crossings, such as ferries on the Clarence River
- smaller items, such as the milestones on the Old Glen Innes Road.

2.5.1 Changes to the Earlier Draft Report

There have been two potential heritage items that have been removed from the draft report submitted earlier in 2018.

St Pauls Catholic Church at Glenreagh - This item was destroyed by fire on the night of 27 May 2018.

Eatonville Gliding Club - Not enough is known about its history and the historical use of this item to qualify it for heritage listing at this time.

3 ASSESSING SIGNIFICANCE

3.1 Introduction

An assessment of cultural significance or heritage significance seeks to understand and establish the importance or value that a place, site or item may have to select communities and the general community at large. The Australian ICOMOS *Charter for the Conservation of Places of Cultural Significance*⁵ (the *Burra Charter 1979*, most recently revised in 2013), the standard adopted by most heritage practitioners in Australia when assessing significance, defines cultural significance as:

“Aesthetic, historic, scientific or social value for past, present or future generations”

Value may be contained in the fabric of the item, its setting and relationship to other items, the response that the item stimulates in those who value it now, or the meaning of that item to contemporary society. Assessments of significance are made by applying standard evaluation criteria. In New South Wales, the NSW Heritage Division of the Office of Environment and Heritage provide guidelines for assessing significance which refer to the following seven criteria. The criteria has been discussed with the heritage working group and have been applied in the recommendations for heritage listing within this report.

Criteria A; historical	<i>An item is important in the course or pattern of NSW’s cultural or natural history (or the cultural or natural history of the local area);</i>
Criteria B; associational	<i>An item has strong or special associations with the life or works of a person, or group of persons, of importance in NSW’s cultural or natural history (or the cultural or natural history of the local area);</i>
Criteria C; aesthetic, creative or technical	<i>An item is important in demonstrating aesthetic characteristics and/or a high degree of creative or technical achievement in NSW (or the local area).</i>
Criteria D; social values	<i>An item has strong or special associations with a particular community or cultural group in NSW (or the local area) for social, cultural or spiritual reasons;</i>
Criteria E; scientific or archaeological value	<i>An item has potential to yield information that will contribute to an understanding of NSW’s cultural or natural history (or the cultural or natural history of the local area);</i>
Criteria F; rarity value	<i>An item possesses uncommon, rare or endangered aspects of NSW’s cultural or natural history (or the cultural or natural history of the local area);</i>
Criteria G; representative value	<i>An item is important in demonstrating the principal characteristics of a class of NSW’s cultural or natural places; or cultural and natural environments;</i>

⁵ The Australia ICOMOS Burra Charter, 2013, Charter for the conservation of places of cultural significance.

In addition, the following historical themes, in reference to Criterion A, have been nominated for this study, from the list of nine State and National Historical themes provided by the Office of Environment and Heritage. The history in relation to the selected themes is explored in the separate historical thematic report (Volume 2) provided for the Study. The themes are the following:

New South Wales Historical Themes	
National Theme	State Theme
1. Tracing the natural evolution of Australia	Environment (natural)
2. Peopling Australia	Aboriginal cultures & interactions with other cultures; convicts; migration; ethnic influences
3. Developing local, regional & national economies	Exploration & events; Pastoralism, agriculture, fishing & forestry; industry & mining; commerce, health & transport; communications; science & technology; events; environment (cultural)
4. Building settlements, towns and cities	Towns, suburbs & villages; land tenure & accommodation; utilities; labour & education
5. Working	Labour
6. Educating	Education
7. Governing	Government and administration; defence; law & order; welfare
8. Developing Australia's cultural life	Domestic life; creative endeavour; leisure; religion & institutions; sport
9. Marking the phases of life	Birth & death; persons
http://www.environment.nsw.gov.au/resources/heritagebranch/heritage/themes2006.pdf	

Most of the recommended heritage items in this Heritage Study can be grouped within theme 3 and 4, although there are items that relate to each of the above themes.

3.2 Potential Individual Heritage Items

This Study recommends the following 114 individual items plus 6 heritage conservation areas are included on the schedule of places of local heritage significance in the Clarence Valley Local Environment Plan.

Please note that the SHI numbers (State Heritage Inventory number) used in the table are an identifying number directly taken from the SHI database.

This number will relate to the item throughout the remainder of this project and will be publically accessible via the link –

<http://www.environment.nsw.gov.au/heritageapp/heritagesearch.aspx>

once items have been through the approval process of public consultation by Clarence Valley Council. At that point they will be noted for inclusion on the Local Environmental Plan.

All of these 116 items have now been entered onto the SHI database. The list of items also includes existing heritage items for the study area and these are differentiated within the list as **bold and italicised**. The list is attached with this report **see Annex A**.

3.2.1 Condition Reporting

The following definitions can be used throughout the SHI forms when condition can be described for a heritage item:

<i>Excellent</i>	In relation to the condition of an item this means high quality, up to date
<i>Fair</i>	In relation to the condition of an item this means adequate and habitable
<i>Good</i>	In relation to the condition of an item this means high quality (but not excellent)
<i>Poor</i>	In relation to the condition of an item this means less than adequate
<i>Sound</i>	In relation to the condition of the building this means solid and strong

Please note that the condition nominations will need to be finalised during the process of Council consultation and liaison with individual property owners.

3.3 State heritage nominations

Within the 114 heritage items recommended for listing on the Clarence Valley LEP, there are six items that have been nominated for State heritage significance. Some of these items have already been listed as State heritage items on relevant S.170 heritage and conservation registers. The six items are noted below with a summary description. They are the following:

3.3.1 Nymboida Hydro-Electric Power Station

This building and works are an existing heritage item for Essential Energy, listed as a local heritage item on their Section 170 heritage and conservation register.

The concrete power house building was constructed in 1923 and on the 26th of September in that year Dr Earle Page laid the foundation stone. It is located off the Armidale Road in Nymboida. Pre-dating the Mullumbimby Power House complex, the Nymboida Power House complex may be the second hydro-electric power station built on the Australian mainland.

The complex is representative as a rare and fine example of a 1920s provincial hydro-electric power generating complex, complete with a significant collection of associated features and machinery. As part of a group of power stations and associated items, the Nymboida Hydro-electric Power Station has a high level of heritage significance for its association with the early development of hydro-electric power generation in New South Wales. A modern substation has been built immediately east of the power house. To the southeast the tailrace discharged water that powered the turbines, and the tailrace water flowed into Gulang Creek, which was a popular white-water canoeing location.

3.3.2 Ramornie Meatworks site, 1865-1924

This former complex, off the Gwydir Highway on the banks of the Orara River near Eatonsville is an existing local heritage item on the Clarence Valley LEP, No. I344. It is now an archaeological site on private property, most of the buildings were relocated and reused elsewhere within Clarence Valley, including the boiling down vat now located at Gwydir Highway rest stop.

It was an abattoir, meat processing, and canning complex of considerable historical significance to NSW, if not Australia during the early 20th century. It operated under the name Australian Meat Company. It not only employed numerous staff including importing

craftspeople from Europe, but its cans of processed meat were purchased by Britain as military food.

Its founder was a significant historical figure, Charles Grant Tindall, who also constructed an early, 1858, fine and large homestead, also called Ramornie. Its location is 10.5km to the north-west of this site, and it is an existing separate heritage item. It was first proposed by the National Trust to be listed as a heritage item in 1977 and it is also currently recommended for State heritage listing.

3.3.3 Ulmarra Court house and Ulmarra Police Station / Official Residence

These adjoining properties, at 14 and 16 River Street Ulmarra, are currently local heritage items on the LEP, No. I392 and on the NSW Police Section 170 heritage and conservation register. However, as good examples of public buildings designed by the NSW government architect Walter Vernon and completed in 1891, they do fit State level significance for historical, associational, representative and aesthetic values.

Both the Police Station and the adjoining Official Residence are attractive and historic buildings within the townscape of Ulmarra and they contribute to the heritage values of the streetscape (River Street). This pair of buildings are socially and historically significant for their long and continuous links to law and order and the provision of the police service in the Ulmarra area since the late 19th century. They also retain their 19th century character and appearance.

3.3.4 Bawden Bridge

The Bawden Bridge (named after Thomas Bawden the Parliamentary Member) is located over the Orara River on the Old Grafton Road at Waterview Heights. It is a lattice truss bridge, completed in 1874. It is of historical significance and has rare and representative technical and aesthetic qualities. The Bawden Bridge was classified as a 'British style' bridge, a design constructed in NSW prior to the general move towards American-influenced bridge designs in the late 19th and early 20th centuries. It has a two-span continuous lattice truss, 77m long with timber beam approaches spanning a deep narrow gorge and is supported on three wrought iron plate piers.

The bridge is in reasonable condition and its appearance and rural location, as well as its technological value contribute to its significance. The Bawden Bridge as a lattice truss bridge is increasingly rare as these structures are replaced or upgraded with modern constructions. The Bridge was noted to be one of six of the oldest lattice truss designs in NSW and the seventh oldest metal truss bridge in Australia. For these reasons it is noted to be of State heritage significance.

3.3.5 Briner Bridge over Upper Coldstream River, Tucabia

The Briner Bridge is a Dare type timber truss bridge and was completed in 1908. It was designed by Harvey Dave and built by a Coffs Harbour bridge maker, J McPhillips. It is a small and neat bridge on a local road, with a single timber truss span of 27.7m (91ft). The bridge is assessed to be of State significance for its history, rarity and its representative values.

The bridge exhibits technical excellence in its design, and all of the structural detail is clearly visible. Within its rural landscape it is part of an attractive country setting and as such is visually appealing and has local aesthetic value. The Briner Bridge is valued by the people of the Clarence Valley district; the bridge was named after a historical local Member of

Parliament, G.S Briner, who was significant in lobbying for its construction⁶. The bridge has technical significance because it is a Dare truss and is representative of some major technical developments that were made in timber truss design by the Public Works Department.

It is also rare within NSW as in 1998 there were only 27 surviving Dare (timber) truss bridges within NSW of the 40 that were built. This number is likely to be considerably less in 2018.

3.3.6 Former Glenreagh Railway Station Complex

The former Glenreagh Railway Station has historical, associational and representative heritage values as part of the North Coast Railway. The Station was finally in operation in 1922, after many years of discussion. It was closed in 1983. A conservation management plan was prepared for the site in 2002 and this document noted:

Since the site was abandoned in 1982, the balance of buildings left on the site have fallen into disrepair.

The individual buildings which are remnant to the site are not particularly rare within the NSW rail network, however as a group they are significant in demonstrating a high degree of technical achievement, and exemplifies a particular technology in its dying years.⁷

The CMP prepared 20 policies for the management of the former railway station and to guide future work at the station. A series of community interest groups made up of locally based keen volunteers are available to undertake projects, once approval is provided. Similarly, to the Briner Bridge above, as more industrial heritage disappears the remaining items are rare. While not all items can be retained, there is a need to preserve the representative samples that do exist.

⁶ Roads and Maritime Services, October 2018, Statement of Heritage Impact - Briner Bridge upgrade.

⁷ Caldis Cook Group, September 2002, Conservation Management Plan – The Glenreagh Station Group, p1

3.4 Heritage Conservation Areas

A total of six heritage conservation areas are advised as a result of this Study. There is one existing heritage conservation area, which is for the township area of Ulmarra. There are minor additions suggested for its boundaries.

The proposed areas are recommended for listing as they retain groups of individual places of local heritage significance that exhibit a consistency of historic eras and designs. In all of these proposed heritage conservation areas, the natural environment or rural landscapes are a contributing factor in the aesthetic value. These areas have heritage significance for their historical, social and aesthetic values. It is worth noting that within these potential heritage conservation areas there are individual places that have been recommended for individual heritage listing. There are also some properties which may not hold any significance, and thus can be classed as 'neutral' or even intrusive – see the ranking below - but are located within the logical boundary of a heritage conservation area.

The terms used below for heritage classification are based on the Australian ICOMOS provided publication, *The Conservation Plan*. The ranking is simply recommended to aid understanding of individual properties within a proposed heritage conservation area and to provide flexibility necessary for management of future change for heritage items and within heritage conservation areas.⁸

Heritage Ranking Identification	Explanation
Exceptional	Rare or outstanding item at either local or State significance. High degree of intactness and original fabric association with early construction period.
High	High degree of intactness and original fabric. Any alterations or additions do not detract from its significance.
Moderate	An item with altered or modified elements which do not detract from its overall significance
Little	Alterations detract from significance. Difficult to interpret original item.
Neutral	New item in an area associated with present use. Sympathetic design which does not detract from significance of the area.
Intrusive	Later fabric or major alterations to an item which obscures or detracts from significance of the area.

⁸ [James Semple Kerr's *The Conservation Plan* was first published by the National Trust of Australia (NSW) in 1982. In 2013, Dr allowed Australia ICOMOS to provide the 7th edition] J.S. Kerr, *The Conservation Plan*, Seventh Edition, 2013, p19

Table 3 – Existing and Potential Heritage Conservation Areas

Area	Description and Location
Diggers Camp heritage conservation area	- This area consists of the houses around Diggers Headland Reserve, which is managed by Clarence Coast Reserve Trust. There are a small number of 1920s-1970s houses facing this reserve, as well as the camp ground and general store.
Glenreagh village heritage conservation area	- Both sides of Coramba Street of Glenreagh, extending from the General Store to the Golden Dog and from Glenreagh Bakery to include the CWA building.
Minnie Water heritage conservation area	- This small area includes the General Store, the Nip Welsh memorial park, and 1960s community hall located opposite the General Store, bounded by the beach area.
Sandon Village (south) heritage conservation area	- The small township south of the Sandon River is difficult to reach without a 4WD vehicle or a boat. Preservation of the small scale coastal is recommended.
Ulmarra heritage conservation area <i>EXISTING</i>	- This is recommended to be retained – along with small additions to the existing boundaries.
Wooli heritage conservation area	- This is a long stretch of properties consisting of the small holiday cabins originally constructed for oyster fishing etc, c.1920s onwards located each side of the Wooli Road extending along Riverside Drive and Main Street from behind the Wooli Bowling Club to the water tower on South Terrace.

4 MANAGEMENT ISSUES

There are identifiable issues that have been considered in this heritage study that need to be highlighted to Council. The following sections introduce the issues for discussion.

4.1 Social and community responsibilities

Engagement with the local community is best undertaken through existing local community groups. There were nine geographical areas identified in this study:

- Area 1: Ulmarra
- Area 2: Tucabia and Coldstream
- Area 3: Seelands and Eatonsville
- Area 4: Ramornie
- Area 5: Glenreagh
- Area 6: Coutts Crossing, Nymboida, Tyingham, Dundarrabin
- Area 7: Dalmorton and Buccarumbi
- Area 8: Sandon, Diggers Camp, Minnie Water and Wooli
- Area 9: Jackadgery and Cowper

Each of the nine areas identified in this study have either a community hall or a central hub where notices are displayed and meetings take place. Council are encouraged to arrange a meeting to discuss heritage issues in relation to each of these localities, once the potential heritage items are approved. It was clear during the community meetings that local communities need to understand what they are responsible for and what Council is responsible to undertake. Issues of responsibility also involve approvals.

4.2 Strategic and town planning

For most of the heritage items proposed, Council will be the approval body in relation to any changes. Identification of items of individual heritage significance and the heritage conservation areas is the first step in strategic planning for Council. The next step is listing them on Schedule 5: Items of Environmental Heritage in CVC LEP 2011. Once this is done, the LEP clauses and DCP guidelines for heritage conservation will need to be widely circulated within Council so that issues for Development Approval and heritage are understood. This will assist with any enquiries from owners of the heritage listed items in relation to approval, funding and process. Council already have an excellent tri-fold (12 small pages) brochure prepared that needs to be reprinted and on hand at the Grafton counter and also provided in a Web format. *Heritage items and heritage conservation areas an owner's guide to approval requirements* was printed in August 2011. It needs to be stated to owners that it is only when changes are required that approvals are required.

The Heritage Strategy adopted by Council in 2013 nominated that a Heritage Committee be established to deal with heritage matters in the Clarence Valley Council area. The aims and tasks of this committee will be invaluable in proceeding with this Community Based Heritage Study and are recommended to Council as part of this project.⁹

⁹ Clarence Valley Council Heritage Strategy, Adopted 21 May 2013, p3

For the Glenreagh village proposed heritage conservation area, the existing Glenreagh Village Controls (Part R), in the Clarence Valley Council 'Residential Zones DCP 2011' provide the information and guidelines relative to this area.

Ulmarra is an existing heritage conservation area, with minor boundary additions recommended herein. The existing planning conditions outlined in Part 5, Clause 5.10 of the *Clarence Valley Local Environmental Plan 2011* do apply.

For the proposed heritage conservation areas in the coastal villages of Diggers Camp, Sandon and Wooli – these are located within the reserves of the Yuragir National Park. Reference would need to be made to the NSW National Parks and Wildlife Service regarding management and regarding heritage listings. The Clarence Valley Council 'Development in Environmental Protection, Recreation and Special Use DCP 2011' is a good source for planning protections for these areas.

4.3 Economic and cultural responsibilities

Many of the nine identified areas, noted above, are small rural settlements and within them, many of the potential heritage items will be privately owned. Rather than heritage listing being feared as a burden – either financially or approval wise, there is an opportunity for Council to publicise to all rate payers and to each of the nine communities that it has an existing local heritage funding process. This is a responsibility for Council to communicate as part of the outcomes of this community based heritage study and will help to achieve its cultural responsibility goals.

4.4 Location, Context and Use - Tourism

In regard to location and context, many of the heritage places in the Study Area are within picturesque and scenic natural landscapes, which are travelled and appreciated by visitors to the area, mainly tourists. This is in addition to the local inhabitants. This makes the tasks of identifying, promoting and explaining the historical and/or archaeological precincts directly linked to the tourism and visitor experiences that Clarence Valley Council already promote so well.

Each region has tourist promotional brochures and maps in relation to roads and the rivers. Clarence Valley has '52 discoveries in our big backyard' as well as flyers for individual places such as the very popular Ulmarra Heritage Trail (see **Annex B**). The inclusion of heritage signage and provision of tourist maps with information at the places identified below would add greatly to the visitor experience for these areas:

- Glenreagh, to be located at the School of Arts OR the General Store
- Nymboida, to be located at the canoe centre and also at the community hall

One signage approach that works well is the approach that NSW National Parks and Wildlife Services have taken for the coastal settlements within this Study, as well as at Dalmorton. The large signage at these locations are easily maintained and become a welcome stop for all information needed for the area. The examples shown here are from Diggers Camp and Sandon (Figure 2 and Figure 3).

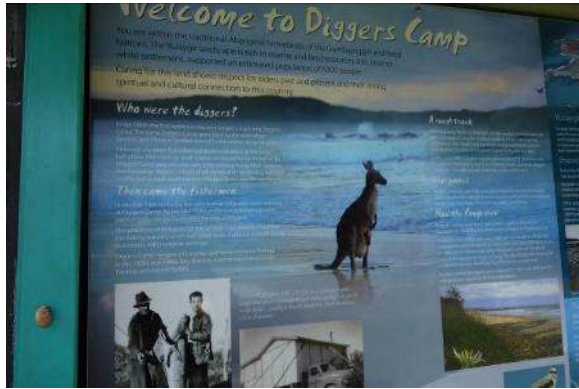


Figure 2: Historical and useful signage most welcome at small settlement of Diggers Camp



Figure 3: The traditional covered and hardy signage adopted by NSW National Parks and Wildlife.

There is one existing history noticeboard at Ulmarra, and two history / heritage huts located within the study area, one at Tyringham and one at Jackadgery. The Ulmarra noticeboard was erected with the assistance of the former Pristine Waters Council and local Ulmarra residents/groups. It is located in a prominent position for travellers to Ulmarra, in Ulmarra Park near the public toilets. However, it is recommended that Ulmarra include more signage within its heritage conservation area. For all of these historical areas - Ulmarra, Jackadgery and Tyringham - these signs are the only publically accessible historical markers and information sources (Figure 4 to Figure 9).

The Jackadgery and Tyringham heritage huts were also erected with the help of local communities and the former Pristine Waters Council. Both of these are replica timber slab huts, which were chosen to provide an indication of early settlers housing. These huts are located at visitor rest locations on the highways. However, their signage needs to be reinstated. The Tyringham heritage hut has been recommended for local heritage listing within this report as it is a focal point for travellers and provides a wealth of historical information.



Figure 4: Ulmarra heritage signage at riverside park and public toilets



Figure 5: NSW NPWS heritage signage at Dalmorton, by the roadside and in front of the historic police station and lock-up.



Figure 6: The Tyringham hut, Armidale Road Tyringham, a pleasant place to stop.



Figure 7: One of the wall mounted Tyringham hut history displays - in need of remounting.



Figure 8: Jackadgery hut, dedicated to the Lollback family, at the Jackadgery rest stop, Mann River Gwydir Highway



Figure 9: One of the wall mounted Jackadgery hut history displays - in sad need of replacement.

It is recommended that Clarence Valley Council deploy public park funds to upkeep the signage for these small structures and that annual inspections are sufficient to keep the information inside these huts legible. Currently, these huts are a negative presentation for Clarence Valley Council. The information is faded and falling off the walls. As these huts are located on roadside verges, it is recommended that Council includes the inspection and maintenance of these huts and displays as part of their regular roadside maintenance.

4.4.1 Locals and Use

With regard to use of the heritage places, the importance of engagement with stakeholders and local community groups may not need to be highlighted.

Through the active work of Council in the area of community engagement, it will be possible to promote local sponsorship, guardianship and even patronage of heritage items and places. Most of the rural villages and townships within the former Shires have active community groups, such as seen in the community noticeboards at both small villages of Dundarrabin and Diggers Camp. Other villages, such as Cowper, have active Lions or Rotary Clubs. Nymboida has active clubs that focus on activities, such as cooking and knitting. However, it is true that for all these groups there is a very keen and vested local interest relating to history and to protection for heritage. Not just family and local history, but pride and acknowledgement and potentially the capacity to be a guardian for local heritage places.

This would mean that the vandalism at the Jackadgery history hut that removed signage and acknowledgements would be reported to a local committee who could organise, again at the local level, necessary repairs. There will also be an opportunity for local community members to suggest future uses for the buildings and places that are no longer in use for their original purpose.

5 RECOMMENDATIONS AND NEXT STEPS

The NSW heritage management system adopts a three-stage process for investigation, assessing and managing heritage resources by investigating significance, assessing significance and managing significance. The Community Based Heritage Study only addresses the first two steps for Clarence Valley Council, the third step in the process will require management of heritage significance through the LEP and DCP guidelines and further policies.

The final version of this report recommends the LEP listings for identified State Heritage items, Local Heritage items and heritage conservation areas. It is recommended that Clarence Valley Council undertakes the following necessary actions to successfully complete this Community Based Heritage Study:

- Endorses the Heritage Study and its report in relation to the ongoing management and protection of heritage places
- Advertises the listing recommendations and invites public comment on the items, their significance and the identification of any gaps in the listings
- Includes provisions for the management of heritage items and conservation areas within its Local Environmental Plan (LEP) and Development Control Plans (DCP)
- Lists the places identified within this report in Schedule Five, places of heritage significance in the Clarence Valley Local Environment Plan
- Lists conservation areas identified within this report in Schedule Five, places of heritage significance in the Clarence Valley Local Environment Plan
- Supports the heritage listings by inclusion of descriptions and guidelines for development with the relevant Development Control Plan (DCP)
- Records information about those places that were considered within the Study but were not recommended for listing at this point in time due to insufficient information to substantiate local heritage significance
- Undertakes activities to promote the Shires' heritage within Council – specific recommendations are made in Section 4 of this report.
- Undertakes activities to promote and to educate the community of the benefits of listing and protecting items of local heritage significance – specific recommendations are made in Section 4 of this report.
- Continues the annual local heritage fund based on guidelines issued by the NSW Heritage Division of the Office of Environment and Heritage.
- Establishes the Heritage Committee which was adopted in 2013 as part of the Heritage Strategy for CVC.

5.1 Next Steps

With these new heritage items and the large-scale area involving much travel, there are increased responsibilities for Clarence Valley Council in relation to heritage.

It is strongly recommended that the heritage committee (also described as a heritage advisory committee) be established to assist with the responsibilities. It is recommended that the committee's role would be to:

- Assist Council's heritage advisor with the many heritage issues within this vast area that do not relate to development approvals. Their scope of works would include

terms of reference to support Council in managing (maintenance), promoting and conserving the identified items of local heritage.

- Increase local community engagement, at a minimum, for each of the nine areas noted above in Section 4.1 and within the nominated heritage conservation areas.
- Communicate with potential volunteer organisations such as Apex, Rotary and Lions Clubs within these areas or more specifically to arrange for information gathering, maintenance, clearing and cleaning of places such as the Recreation Grounds, parks and former coal mine sites. These existing volunteer organisations would prove helpful in arranging heritage brochures and heritage walks, such as the Ulmarra heritage brochure, see Annex B.
- Meet each quarter at CVC in order to review achievements and plan the next actions.

5.2 Site Specific Recommendations

This study has considered heritage items in a broad sense within the vast area. There is one particular type of heritage item that is common to all areas and that is cemeteries - historic (and current).

5.2.1 Cemeteries

Clarence Valley Council has a website page dedicated to *Family and Pioneer cemeteries*. The cemeteries identified within this heritage study need to be included and therefore the website material will need updating.

In particular this applies to small grave sites such as on private rural properties, including at Ramornie and the Tyringham graves. However the historic cemetery along Coldstream Road in Ulmarra also needs to be included.

In relation to Council planning provisions, there are consent requirements in relation to historical cemeteries which are proposed to be heritage listed and these also relate to existing heritage cemeteries. Planning provisions include the need to obtain prior consent to alter, or make changes to the fabric finish and appearance.

However, in reference to the potential item the Aboriginal cemetery at Tucabia, consultation with the relevant local Aboriginal Land Council is required. It is also strongly suggested that during consultation information be provided to the Land Council so that an application for heritage funding to research individuals and families represented can be made.

ANNEX A – LIST OF POTENTIAL (AND EXISTING) HERITAGE ITEMS FOR CVC

- Existing heritage items are shown here in **bold**
- Not all fields from the SHI database have been included in this table of items.

#	Name of item:	SHI Number:	Suburb or Town:	Address Lot/ DP
1.	Wiriri Road Mailbox	5066194	Billys Creek	Road Reserve Wiriri Road corner with Armidale Road
2.	Buccarumbi Bridge Ruins and Surrounds	5066332	Buccarumbi	Road Reserve- Old Glen Innes Road and across the Nymboida River
3.	Calliope Public School (former) and Community Hall	5066149	Calliope	681 Sherrys Road, Calliope 92/751390
4.	OBX former Church	5066331	Chambigne	Old Glen Innes Road Lot 63 DP 752 822
5.	Rockview Station (Homestead Complex)	5066346	Chambigne	670 Rockview Road CHAMBIGNE NSW Lot 31 DP 752811
6.	Coutts Crossing Coronation Hall	5066148	Coutts Crossing	7 Armidale Road Lot 1, DP 950371
7.	Coutts Crossing Public School	5066932	Coutts Crossing	1570 Armidale Road
8.	Coutts Crossing Union Church and Sunday School buildings	5066951	Coutts Crossing	Armidale Road & Acacia Avenue Lot 1 DP 954316
9.	Cowper former Church now art gallery	5066335	Cowper	90 Clarence Street Lot 3/DP 758299
10.	Cowper General Store gallery	5066337	Cowper	96 Clarence Street Lot 1 DP 548548
11.	Cowper Hall former Catholic School	5066336	Cowper	58 Clarence Street Lot 14 DP 862144

#	Name of item:	SHI Number:	Suburb or Town:	Address Lot/ DP
12.	Cowper Memorial	5066338	Cowper	Road Reserve eastern end of Clarence Street
13.	Cowper Public School	5066333	Cowper	74 Clarence St Cowper 2460. Lot 1 Section 3, DP 758299
14.	Cowper former Catholic Church (Residence)	5066047	Cowper	1 Samuel Street Lot 1 DP 582159
15.	Dalmorton Police lockup Complex	5066316	Dalmorton	Old Glenn Innes Road Lot 3 DP 758334
16.	Old Glen Innes Road Tunnel	5066044	Dalmorton	Road Reserve Old Glenn Innes Road
17.	Mt Remarkable Gold Mine Existing heritage item	5066317	Dalmorton	6584 Old Glen Innes Road Lot 3 DP 753533
18.	Diggers Camp Heritage Conservation Area	5066312	Diggers Camp	As defined by Conservation Area Map Nugent Street and Miners Street
19.	Dundurrabin Community Centre	5066193	Dundurrabin	Bridge Street Lot 7006, DP 1052194
20.	Eatonsville Community Hall	5066141	Eatonsville	38 Orara Street Lot 134 DP 751383
21.	Eatonsville Recreation Ground	5066144	Eatonsville	Ryan Gully Lane Lot 7012 DP 1055186
22.	Eatonsville Public School (former)	5066143	Eatonsville	25 East Street Lot 151 DP 751383
23.	First Falls Park	5066158	Eatonsville	Orara Street Lot 7303 and 7304 DP 1151546
24.	Residence Former Church	5066156	Eatonsville	13 Orara Street Lot 13 DP 817915

#	Name of item:	SHI Number:	Suburb or Town:	Address Lot/ DP
25.	Camp Eagle Eye	5066174	Glenreagh	2080 Orara Way Lot 99, DP752843 Lot 7303 DP 1130431 Crown Lot 7006 DP 1001497
26.	Glenreagh Anglican Church	5066198	Glenreagh	50 Coramba Street Lot 5 DP 6505
27.	Residence (former Glenreagh bank)	5066179	Glenreagh	9 Dorrigo Street Lot 11 Section 6 DP 758452
28.	Glenreagh Residence / Shop (former billiards hall)	5066176	Glenreagh	Cnr Coramba and Shannon Streets Lot 1 DP 739210
29.	Glenreagh Bridge over the Orara River	5066051	Glenreagh	RTA Bridge No. 2681 Sherwood Creek Road
30.	Glenreagh Cemetery	5066178	Glenreagh	Cemetery Road Lot 7013 DP 92552
31.	Glenreagh (former) Forestry Office and Forestry House	5066171	Glenreagh	5 Shannon Street Lot 2 DP 11960 7 Shannon Street Lot 1 DP 11960
32.	Glenreagh Former Railway Station Complex	5066049	Glenreagh	Sherwood Creek road Lot 2 DP 785174
33.	Glenreagh General Store	5066046	Glenreagh	49 Coramba Street Lot 27 DP 6504

#	Name of item:	SHI Number:	Suburb or Town:	Address Lot/ DP
34.	Glenreagh Mountain Railway Museum	5066173	Glenreagh	Towallum Street Lot 1 DP 823625 Lot 5 DP 198501
35.	Glenreagh Public School	5066175	Glenreagh	Bridge Street Lot 105, DP 820521
36.	Glenreagh Recreation Reserve	5066172	Glenreagh	Bridge Street Lot 97 DP 752843
37.	Glenreagh Village Heritage Conservation Area	5066170	Glenreagh	Coramba Street
38.	Golden Dog Hotel (archaeological site)	5066177	Glenreagh	57-59 Coramba Street Lots 22 and 23 DP 6504
39.	Old Glenreagh Station	5066180	Glenreagh	2980 Orara Road, Kremnos Lots 1 or 2 DP 746338
40.	Glenreagh School of Arts	5066048	Glenreagh	62 Coramba Street Lot 4 Sec 6 DP 752843
41.	Shannon Park and The Esplanade	5066169	Glenreagh	Cnr of Boundary Street and Sherwood Creek Road Lot 7003, DP 1052456
42.	Heifer Station	5066676	Heifer Station	1080 Gorge Road
43.	Jackadgery former community hall	5066163	Jackadgery	44 Mann River Road Lot 39 DP 753509

#	Name of item:	SHI Number:	Suburb or Town:	Address Lot/ DP
44.	Jackadgery School (former)	5066161	Jackadgery	Mann River Road Lot 36, DP 753509
45.	Newbold Grange Homestead Building complex	5066165	Lilydale	600 Gorge Road Lot 1 DP 753528
46.	Minnie Water Heritage Conservation Area	5066313	Minnie Water	Sandon Road
47.	Minnie Water Community Hall	5066678	Minnie Water	Sandon Road Lot 7308 DP 1153056
48.	3 Grafton Street Nymboida	5066186	Nymboida	3 Grafton Street Lot 3 Sec 6 DP 758801
49.	Barns and Outbuildings	5066189	Nymboida	3860 Armidale Road Lot 1 DP 264136
50.	Cartmill House / Property	5066192	Nymboida	4269 Armidale Road Lot 43 DP 1079210
51.	St John's Presbyterian Church (former)	5066184	Nymboida	8 Church Street Lot 6 Sec 5 DP 758801
52.	Former Nymboida Post Office	5066185	Nymboida	1 Nymboida Street Lot 1 DP 781668
53.	Glencoe Rural Property	5066188	Blaxlands Creek, Nymboida	3071 Armidale Road
54.	Nymboida Canoe Centre	5066181	Nymboida	3518 Armidale Road Lot 103 DP 1130173
55.	Nymboida Cemetery	5066183	Nymboida	Cnr of Coalmine Road and Armidale Road Lot 7306 DP 1145336
56.	Nymboida Coaching Station - former	5066187	Nymboida	3970 Armidale Road Lot 11 DP 710619

#	Name of item:	SHI Number:	Suburb or Town:	Address Lot/ DP
57.	Nymboida Coal Mine	5066319	Nymboida	330 Coalmine Road Lot 58 DP752836 Lot 792 DP 813613
58.	Nymboida Community Hall	5066182	Nymboida	3779 Armidale Rd, Lot 1 Sect 6 DP 758801
59.	Nymboida former Power Station Cottages (Group of 4 Houses see below)	5066195	Nymboida	3522 3526 3532 (2 houses) Armidale Road
		5066195	Nymboida	3522 Armidale Rd Lot 102 DP 1130173
		5066195	Nymboida	3526 Armidale Rd Lot 101 DP 1130173
		5066195	Nymboida	3532 Armidale Road Lot 100 DP 1130173 (2 houses on one lot)
60.	Nymboida Goolang Creek Fossil Wood deposits Existing Heritage Item	5066347	Nymboida	Goolang Creek, off Power Station Road
61.	Nymboida Hydro-electric Power Station Complex including Pipeline and weir Existing Heritage Item	5066139	Nymboida	3532 Armidale Road
62.	Nymboida Police Station Complex Existing heritage item	5066052	Nymboida	4216 Armidale Road Lot 116 DP 723024

#	Name of item:	SHI Number:	Suburb or Town:	Address Lot/ DP
63.	Pollacks Bridge over the Nymboida River <i>(170 register only)</i>	5066140	Nymboida	Armidale Road (Regional Rd 74)
64.	Sunnyside Historical Cemetery	5067093	Nymboida	Armidale Road
65.	Pillar Valley Public Well Existing heritage item	5066677	Pillar Valley	Road Reserve Ulmarra Wooli Road
66.	Ramornie Historical Cemetery	5066164	Ramornie	1672 Gwydir Highway Lot 1 Dp 1088677
67.	Ramornie Cenotaph	5066157	Ramornie	Road Reserve adjacent to 1672 Gwydir Highway
68.	Ramornie Meatworks (former) Existing heritage item	5066142	Ramornie	off Gwydir Highway Lots 4 and 8 DP 752846 – description needs updating in LEP.
69.	Ramornie Station Homestead & Barn Existing heritage item	5066150	Ramornie	Ramornie Station Road Lots 1 and 2 DP 752846
70.	Sandon North cabins	5066315	Sandon	Yuraygir National Park Sandon River Village SANDON NSW 2463
71.	Sandon Village Conservation Area	5066330	Sandon	Sandon Back Trail, Jetty Road and Pebbly Crescent as defined on Conservation Area map.
72.	Seelands School Site	5066166	Seelands	297 Seelands Hall Road Lot 1 DP 181781
73.	Seelands Hall including Honour Board	5066145	Seelands	5 Ski Lodge Road Lot 1 DP 312440
74.	House	5066168	Seelands	24 Schwinghammer Road Lot 43 DP 1066418
75.	Yattendon House	5066167	Seelands	121 Seelands Hall Road Lot 2 DP 706806

#	Name of item:	SHI Number:	Suburb or Town:	Address Lot/ DP
76.	Residence Former Post Office	5066154	Tucabia	17-19 Coldstream Terrace Lot 9 Sect 11 DP 758999
77.	Tucabia General Cemetery (historical)	5066146	Tucabia	Collett Street Lot 1 668527, Lot 7300 DP 1139262 Lot 1 DP 668344 Lot 1 DP 668343
78.	Bowling Homestead	5066151	Tucabia	Bowlings Road Lot 240 DP 751390
79.	Ulmarra Cemetery	5066147	Ulmarra	Coldstream Road Lots 1-5 DP 115158; Lot 7303 DP 1147299 being D1024308 and Lots 6-7 DP 115158; & Lot 7304 DP 1147299 being D1025768
80.	Tucabia Public School	5066153	Tucabia	2 Mookin Street Lots 1- 10 Sec 17 DP 758999
81.	Tucabia former Well Existing heritage item	5066057	Tucabia	Candle Street Lot 7 DP 902431
82.	Residence, former Post and Telegraph Office Tucabia	5066152	Tucabia	2 Aradin Street Lot 9 S 11 DP 758999
83.	Briner Bridge over Upper Coldstream River Existing heritage item	5066058	Tucabia	RTA Bridge No. 2680 Coldstream Terrace

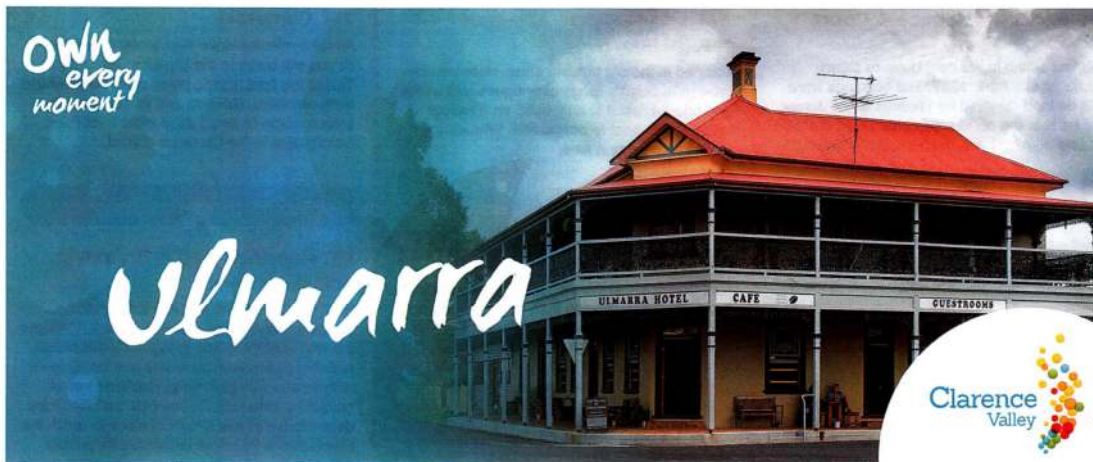
#	Name of item:	SHI Number:	Suburb or Town:	Address Lot/ DP
84.	Tyringham Heritage Hut	5066191	Tyringham	Armidale Road Lot 7300 DP 1153798
85.	Tyringham Village Graves	5066190	Tyringham	Armidale Road Lot 4 DP 752847
86.	NSW Rural Fire Service HQ (Former Council Chambers) and historic plantings.	5066323	Ulmarra	15-17 Coldstream Street Lot 7 DP 1022562 Lot 6 DP 1106942
87.	Police Residence / Lock-up Ulmarra Existing heritage item	5066567	Ulmarra	16 River Street Lot 1 DP 199572
88.	Residence 17 River Street Silverweir	5066068	Ulmarra	17 River Street Lot 1 DP 800248
89.	House, 20 River St Woodfordleigh	5066325	Ulmarra	20 River Street Lot 1 DP 743742
90.	Shop and Residence (Folk Art Cottage)	5066643	Ulmarra	13 Coldstream Street Lot 5 DP 976697
91.	Coldstream Gallery	5066072	Ulmarra	5 Coldstream Street Lot 1 DP101684
92.	Anglican Church (former) Ulmarra	5066063	Ulmarra	12 Pacific Highway Lot 1 DP 615287
93.	Former Anglican Rectory (Residence)	5067032	Ulmarra	10 Pacific Highway Lot 2 DP 615287
94.	Catholic Church (former)	5066321	Ulmarra	35 River Street Lot 91 DP 1133642

#	Name of item:	SHI Number:	Suburb or Town:	Address Lot/ DP
92A	Former Catholic Rectory	On same sheet as 5066321- create separate listing sheet for residence circa 1897	Ulmarra	37 River Street Lot 1 DP 784036
95.	Lower Ulmarra School & Residence	5066060	Ulmarra	1708 Pacific Highway Lot 407 DP 751390
96.	Former Presbyterian Church with Memorial Fence	5066320	Ulmarra	23-25 Coldstream Street Lot 28 DP 1103583
97.	Ulmarra (former) Masonic Lodge	5066065	Ulmarra	8 River Street Lots 1 and 2 DP 797896
98.	Shop Former Ulmarra Butter Factory Butcher	5066196	Ulmarra	25 Pacific Highway Lot 101 DP 816691
99.	Ulmarra Hotel and adjoining cottage	5066066	Ulmarra	2 Coldstream Street Lot 1 DP 847075
100.	Commercial Building (Former Ulmarra Cream and Butter Factory)	5066645	Ulmarra	21 Pacific Highway Lot 104, DP 826322
101.	Courthouse (Former)	5066059	Ulmarra	16 River Street Lot 1 DP 199572 (note on same land as former Police Residence)
102.	Ulmarra Heritage Conservation Area	5066061	Ulmarra	Urban Area around Coldstream Street
103.	Woolitji Co-Op (former Methodist/Uniting Church)	5066642	Ulmarra	2 River Street Lot 22 DP 794498

#	Name of item:	SHI Number:	Suburb or Town:	Address Lot/ DP
104.	Ulmarra Public School Complex & Hoop Pine	5066327	Ulmarra	14 Pacific Highway Lot 10 DP 1031995
105.	Exchange Hotel (former) incl pressed metal linings ceilings & walls etc	5066657	Ulmarra	3 Coldstream Street Lot 150 DP 1228053
106.	Residence (Former Norco Factory Managers Residence)	5066653	Ulmarra	6 Pacific Highway Lot 1 DP 560144
107.	Residence (Ulmarra Post Office former)	5066568	Ulmarra	18 River Street Lot 2 DP 586095
108.	Residence, 27 River Street	5066069	Ulmarra	27 River Street Lot 1 DP 600056
109.	Pair of Houses, 37 Pacific Hwy Ulmarra	5066647	Ulmarra	37 Pacific Highway Lot 2 DP 1097103
107 A	<i>Pair of Houses, 39 Pacific Hwy Ulmarra</i>	<i>5066647 Shares same sheet- need to create separate sheet</i>	Ulmarra	39 Pacific Highway Lot 2 DP 1097103
110.	Residence	5066655	Ulmarra	21 Coldstream Street Lot 1 DP 797958
111.	Residence (Former ESA Bank)	5066646	Ulmarra	1 Coldstream Street Lot1 DP 1100038
112.	SES Building (Former Capp Theatre)	5066654	Ulmarra	20 Coldstream Street Lot 7 DP 1099212

#	Name of item:	SHI Number:	Suburb or Town:	Address Lot/ DP
113.	Residence (Corndale)	5066641	Ulmarra	1117 Pacific Highway Lot 4 DP 617490
114.	Residence 'Belmore'	5066644	Ulmarra	41 Pacific Highway Lot 1 DP 196108
115.	Windsor Cottage	5066572	Ulmarra	2 Hoades Lane Lot 1 DP 596080
116.	Silo	5066339	Ulmarra	1652 Pacific Highway Lot 50 DP 854424
117.	Silo	5066340	Ulmarra	398 Coldstream Road Lot 1 DP 986364
118.	Bawden Bridge over the Orara River (170 Register - State Significant)	5066138	Waterview Heights	Road Reserve Old Grafton to Glen Innes Road
119.	Wooli Heritage Conservation Area	5066314	Wooli	Caraboi Street and Main Street As mapped in proposed Conservation Area boundary.
120.	Slovenski Monument Statue	5066328	Yuraygir National Park	Yellow Cutting Road GPS AMG 05147 E 669112 S

ANNEX B – ULMARRA HERITAGE BROCHURE



A visit to Ulmarra is like stepping back in time as the village remains one of the finest examples of a 19th Century riverport in Australia. The entire village is classified by the National Trust.

Little wonder that this community is keen to develop the village as a town of living history with "crafty" businesses occupying the lovely old commercial centre.

The lattice work and colonial style of the Ulmarra Hotel attracts considerable comment as it nestles on the banks of the Clarence River. The hotel and village were used as the location for the T.V mini-series "Fields of Fire" - a story based on life in a 1929 Queensland sugar cane town. Scenes for the film 'The Picture Show Man' were also shot here.

Bailey Park, beside the hotel, is a good local fishing spot. Coach groups and travellers regularly use the park facilities, including disabled toilets, and enjoy the old photographs and information on a "Heritage Trails" board.

A walk down memory lane may be the best way to describe a wander through Ulmarra.

By the time you explore the art & crafts or antiques shops and enjoy refreshments at the local coffee lounge, hotel or service station you will love the place and want to learn more of its history.

Explore Ulmarra

If you feel like taking an interesting walk follow the map (on the reverse side) and enjoy these delightful features:-

1] Fibre Delights

11 Coldstream Street.

Unique local handmade goodies. Handworked crochet, handknits, photography, woodwork, handforged metalwork, reclaimed timbercraft, leatherwork, silversmithed jewellery, gifts plus much more. Open 9.30am to 3.30pm - 7 days.
0423 836 249

2] Rathgar Retro Op-Shop

9 Coldstream Street.

Supporting Rathgar Lodge. You just never know what new treasure you might find. Open Thursday & Friday 9am to 4pm.

3] Coldstream Gallery

5 Coldstream Street.

Coldstream Gallery is located in the historic river port of Ulmarra. Situated in the original Sydney Stores department store circa 1907, this building has quite some history. Transitioned to a fine art gallery in 1975 it has grown to become a gallery promoting local artists and artisans predominantly from the Clarence Valley. Continuing on with the tradition of personal service and quality we exhibit painting, wood, glass, bronze and more, there is something for everyone; from a card for mum to a collectable piece of original Australian art. Workshops and creative classes are run on a regular basis and unique onsite accommodation is available. Contact us with any workshop or accommodation enquiries. Open everyday from 10am to 4pm or by appointment.

(02) 6619 6446

www.coldstreamgallery.com.au

4] Ulmarra Books

4 Coldstream Street.

Probably the largest second-hand bookshop on the North Coast of NSW, it covers a complete range of titles in all categories. The shop is open 7 days from 10am - 4pm.

(02) 6644 5000 0421 474 268

5] Jack a Dandy / Lilly's Lair

8 Coldstream Street.

Located at 8 Coldstream Street. Paul & Jill have an exotic range of unusual gifts from around the world ranging from ceramics to jewellery to fabrics including a range of trade arts. Open 10am to 4pm Thursday - Sunday.

(02) 6644 5881

6] P.J.Art Gallery

12 Coldstream Street.

His name is Peter J. Hill and his equine and landscape art works are hanging on the walls of private collections and public offices in three continents. Peter and his wife Judy have opened a Studio/gallery in Ulmarra situated in the villages former newsagency. Open Wednesday to Sunday 10am to 3pm. Open by appointment Monday & Tuesday.

0428 259 014

7] Muddy's & Studdy's Servo

Located on the corner of Coldstream Street & Pacific Highway is Liberty Service Station, post office and newsagency. Treat yourself to one of their delicious homemade pies, sausage rolls and pasties.

(02) 6644 5496

8] Bailey Park

Locals often fish from the bank here for bream and flathead and travellers enjoy the riverside rest area, park facilities (including disabled toilets) and find the 'Heritage Trails Board' very interesting.

9] Ulmarra Hotel

2 Coldstream Street.

The hotel offers icy cold beer, delicious meals at the Cafe Clarence, beer garden on the river bank, Pub TAB, Sky Channel and quality country riverside pub accommodation. The hotel with its recently renovated colonial style and fine iron lacework featured in the movie 'The Picture Show Man' and more recently in the TV mini series 'Fields of Fire'. Breakfast and lunch 7 days, dinner Tues. to Sat.

(02) 6644 5305

www.ulmarrahotel.com.au

10] Ulmarra Wharf

At the river end of Coldstream St on the left you will find the Ulmarra Wharf. This was a major pick up point for steam and sailing vessels serving Sydney, but is now a good fishing spot for the locals and a place for yachts, pleasure craft and house boats to tie up whilst visiting the village.

11] Catholic Church

35-37 River Street.

The church was built in 1912, and a convent school was situated behind the church on the riverbank. The house next door was built for either the nuns at the school or the parish priest. The house is in good condition, and is now the home of the Northam family.

12] Police Residence & Court House

The first sitting in the new Ulmarra Court House was in April, 1887. The buildings were built on land donated by Thomas Small Junior, and he is in the court records as being the first JP, and he may have been the first Magistrate.

13] Former Masonic Hall

[Private Residence]

What was the Masonic Hall is a public hall with stage, supper room, kitchen and toilet block on the ground floor, with the lodge room upstairs.

14] Uniting Church

[Private Residence]

This was previously known as the 'Methodist Church', and originally faced Small St., which later became the Pacific Highway. In the late 1930's the church was moved to face River St.

15] Anglican Church & Rectory

[Private Residence]

The church which now stands on this site was opened in 1912, the foundation stone is still in place. The rectory would have been built about the same time.

16] At The Wood Shop

27 Pacific Highway.

At The Wood Shop is open Monday to Friday 7.30am to 4.00pm with architectural timber products e.g. bench tops and handcrafted unique timber furniture.

(02) 6644 5808

www.woodshop.com.au

The Little Local Cafe

27 Pacific Highway

Whether visiting Ulmarra or just travelling through, stop in at the The Little Local Cafe van at the side of the highway to pick up a great Botero coffee, frappe or smoothie.

17] Old Codgers Antiques

21 Pacific Highway.

Located in the old butcher shop. Here you can browse through a range of antiques, old wares and bric-a-brac. It is only open on a casual basis so it is best to phone Ron Wheatley ahead to arrange a time.

0400 285 774

18] Contrary's on Clarence

21 Pacific Highway, in the old Norco Butter Factory.

"Old Wares & Old Wears". An eclectic array of goods available ranging from antique & vintage through to retro. Everything from collectables, clothing, tools, costume jewellery, old linen, kitchenalia, creatively restored & traditional furniture. Open 7 days 9am - 4.30pm.

(02) 6644 5999

19] Ludo & Swagman's Oldwares

21c Pacific Highway.

Open 7 days. 9am - 4.30pm.

(02) 6644 4080 or 0403 071 121

20] Ulmarra to Southgate Ferry

If you would like an unusual experience then hop in your car and take a ride on the Ulmarra to Southgate Ferry. At one time 19 vehicular ferries crossed various sections of the Clarence River to link local communities. This wide river crossing is a pleasant experience, just 1 km out of town north along the Highway. It is not recommended for cars with caravans.

OPERATING TIMES:

6.00am - 7.45am; 8.30am - 11.45am; 12.30pm - 5.45pm; 6.30pm - 11.00pm. The ferry stops for maintenance each Sunday 6.00am - 8.00am. PLUS: The first Wednesday of each month 9.30am - 11.30am.

0437 836 067

21] Cemetery

About 5 minutes drive east along Coldstream St you will come to the Ulmarra Cemetery. This is the final resting place of so many of the early pioneers, Ulmarra and its surrounding area is home to direct descendants of three first fleters in the Clarence district.

Accommodation

A] Rooftops Bed & Breakfast

6 Coldstream Street.

Rooftops B&B is the place to stay when travelling through the Clarence Valley. All rooms are well appointed and thoughtfully decorated, with two queen ensuite rooms and family room with a three way bathroom. Rooftops has all budgets catered for. Please note that Rooftops does require to use a flight of stairs to reach the rooms and is therefore unsuitable for people with mobility problems. *At rooftops B&B 'your comfort is our priority'.*

(02) 6644 5305

www.rooftops.com.au

B] Ulmarra Hotel

2 Coldstream Street.

The Ulmarra Hotel Ulmarra offers overnight accommodation in the traditional pub fashion. Upstairs and overlooking the Clarence River, most rooms have balcony access with stunning river views. Prices per night include a continental breakfast, which is available in the dining room. Group bookings are priced upon negotiation and discounts may apply.

(02) 6644 5305

www.ulmarrahotel.com.au

Bus services

Atwal Bus & Co. Pty Ltd

Atwal Bus & Co. operates the school bus services from Ulmarra to Woolli and Grafton and these can be utilised by the public.

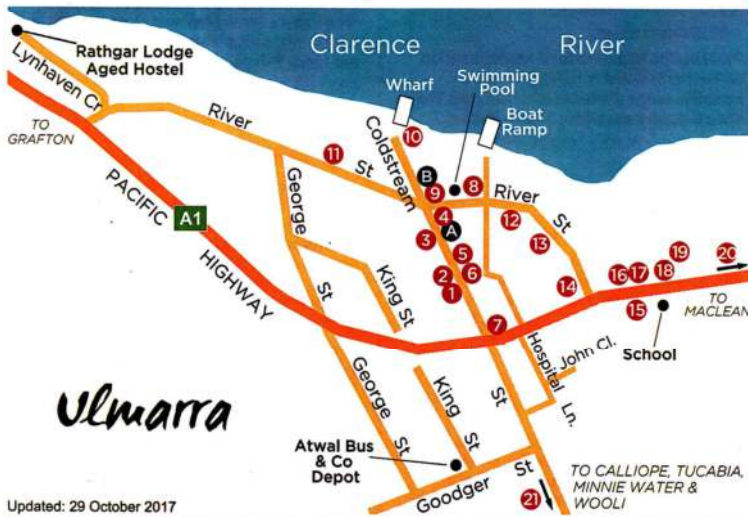
(02) 6644 5482

Busways Northcoast Bus Service

Busways operates to the bus stop opposite the Commercial Hotel. This service links Ulmarra to Grafton, Maclean, Yamba & Iluka.

1300 555 611

www.busways.com.au



Updated: 29 October 2017



Clarence Valley Information Centres
Pacific Highway, Grafton & Maclean

P: 02 6643 0800

E: visit@myclarenc valley.com.au

www.myclarenc valley.com.au

© NOTE: All material is copyright and may under no circumstances be reproduced in whole, or part, without authorisation.

ANNEX C – COMMUNITY MEETINGS AND HERITAGE WORKING GROUP PLUS COUNCIL ADVERTISING

List of community meetings and participants

Ulmarra, 21 st February 2018	Nymboida, 1 st March, 2018	Grafton, 2 nd March, 2018
Des Avery	Joan Smythe	Hazel Lawson
Corallie Eggins	Wendy Birch	Leone Roberts
Warren Henwood	Same day meeting at Nymboida Canoe Centre:	Ross Austen
Hilda Smidt	Gray Stride	
Carolyn Smidt	Dave Stephenson	
Steve Pickering	Eva Staehelin	
Mark McIntyre	Leana Stephenson	
Jean Barnier		
Michelle Scott		
Deborah Wray	Deborah Wray	Scott Lenton
Gina Scheer	Gina Scheer	Gina Scheer

MEDIA RELEASE, ADVERTISEMENTS AND NEWSLETTER



Former Ulmarra Shire Heritage study 2018 Seeking Community Heritage Working Group Members

Residents interested in local history and heritage are invited to join a working group to help collect information on existing and potential heritage places and items within the former Ulmarra Shire.

We are seeking your help with this project as we need to know which items are valued by your community.

There will be a meeting held in Ulmarra on 21st February, 2018. Please note the separate notice regarding time and place.

If you are interested in joining the heritage working group, can you please contact:

Gina Scheer Heritage Consultant Telephone: (02) 6672-7572 Email: Ginascheer@cosmosarch.com	OR	Deborah Wray Senior Strategic Planner 6643 0271 Deborah.Wray@clarence.nsw.gov.au
---	-----------	--

Please note that the closing date for nominations is Friday 16th February, 2018.

This project is supported by the Office of Environment and Heritage and the Heritage Council of NSW





Former Ulmarra Shire

Community meeting Call for historical and heritage information in the former shire area

Bring in your old photos. Share your stories.

Clarence Valley Council is preparing and updating a list of heritage places and items within the former Ulmarra Shire. Old photos and other documents such as letters, newspaper clippings, event programmes, etc. help us understand the history of the area and see how places have changed.

We are seeking your help with this project. We are holding an information day at the RFS on 21st February 2018.

Time: 10.30am – 12 noon
Venue: RFS, 15 Coldstream Street, Ulmarra
(Enter from driveway side of the building)

Please come and meet with us and have morning tea. Share your photos, stories and information on places of historical interest within Tucabia, Ulmarra, Coldstream areas. Your photographs will be reviewed, scanned and returned to you on the spot.

Please contact us for catering purposes:

Gina Scheer	OR	Deborah Wray
Heritage Consultant		Senior Strategic Planner
Telephone: (02) 6672-7572		6643 0271
Email: Ginascheer@cosmosarch.com		Deborah.Wray@clarence.nsw.gov.au

Please also let us know if you would like to be included on our contact list for future similar meetings and information sessions.

This project is supported by OEH and Heritage Council of NSW





Media release

Mayor: Jim Simmons
General Manager: Ashley Lindsay

LOCKED BAG 23 GRAFTON NSW 2460
Telephone: (02) 6643 0200
Fax: (02) 6642 7647

FOR IMMEDIATE RELEASE

February 12, 2018

Help council learn more about our heritage

A STUDY into how the areas around Ulmarra and Nymboida developed is about to get underway and the Clarence Valley Council is looking to the community to provide some crucial input.

Senior strategic planner (heritage), Deborah Wray, said the study aimed to record a range of places in the former Ulmarra and Nymboida council areas, and their stories would help illustrate how the areas developed.

"We want to look at Aboriginal sites, agriculture, mining, fishing, forestry, settlement, tourism, recreational facilities, cemeteries and items of natural heritage," she said.

"We hope the study will bring together many people who share a love of the area and are keenly interested in the links to the past.

"It is important that this information is recorded for our future generations."

Ms Wray said there would be three community meetings (details below) where community members could come along and share their information, photos and stories about buildings and places they consider important to future generations.

"This will help us develop a picture of these communities, but should also be great fun as people share their stories and their links to the region's past," she said.

The area covered by the former Ulmarra and Nymboida shires is vast and covers the area from the boundary of the Nymboida River near Dundarrabin and Tyringham, to Glenreagh, Nymboida, Ulmarra, Cowper, Jackadgery, Cangai, and the coastal villages of Minnie Water, Diggers Camp and Sandon.

Meeting details:

Where	When	Time
Ulmarra, Rural Fire Service, 15 Coldstream Street	Wednesday, February 21	10.30am-noon
Nymboida, Nymboida Hall, Armidale Road,	Thursday, March 1	10.30am-noon
Grafton, Clarence Valley Council conference room, 42 Victoria Street	Friday, March 2	10.30am-noon

Community Heritage— former Nymboida and Ulmarra Shires Heritage Study

The community based heritage study is underway with a heritage consultant appointed to undertake this project for Council. The history of these wonderful places, formerly part of Pristine Waters Council, is well known, however this is the first time a heritage study to record individual places and stories is being done.

We have held 3 community meetings: the first meeting in Ulmarra on 21st February attracted numbers of interested locals, with one family coming from the former Nymboida shire (Tyringham) to discuss heritage listing for historical graves located on private property. Meetings were also held in Nymboida and Grafton and valuable local history and heritage information was provided by community representatives.

The area covered by these former shires is vast. The boundaries run from the Nymboida River near Dundarrabin and Tyringham to Glenreagh as well as Ulmarra, Cowper, Jackadgery, Cangai and the coastal villages of Minnie Waters, Diggers Camp, Woolli and Sandon.



Historical graves on private property Tyringham



War Memorial in Ulmarra Memorial Park

There is still time for you to nominate a property or place that you know of - located either in Nymboida former shire or Ulmarra former shire – that you would like to see protected for the future. Places such as Nymboida Police Station have heritage value, as does the former Glenreagh Railway Station to name just two items nominated. Heritage listing means maintenance and changes will continue to occur but often with funds provided to help with costs. Big changes like demolition or change of use would need consultation and agreement before they can take place.

Please contact

Gina Scheer, Heritage Consultant, Cosmos Archaeology Pty Ltd
on 6672-7572 (ginascheer@cosmosarch.com), or

Deborah Wray, Senior Strategic Planner, Clarence Valley Council
on 6643 0271 (Deborah.Wray@clarence.nsw.gov.au);

if you have historical information or a property you would like to see protected or if you would like to join our heritage working group this year.

A draft report is due to Council in May and a final report is due in April 2019.

Heritage study in full swing

A COMMUNITY-based heritage study of the former Nymboida and Ulmarra shire areas is under way and a heritage consultant appointed to undertake the project.

The history of these wonderful places, formerly part of Pristine Waters Council, is well known. However, this is the first time a heritage study to record individual places and stories is being done.

There have been three community meetings: the first was in Ulmarra on February 21 and attracted many interested locals, with one family coming from the former Nymboida Shire (Tyringham) to discuss heritage listing for historical graves located on private property. Meetings were also held in Nymboida and Grafton and valuable local history and heritage information was provided by community representatives.

The area covered by these former shires is vast. The boundaries run from the Nymboida River near Dundarrabin and Tyringham to Glenreagh as well as Ulmarra, Cowper, Jackadgery, Cangai and the coastal villages of Minnie Water, Diggers Camp, Woolli and Sandon.

There is still time for you to nominate a property or place that you know of – located in the former shires of Ulmarra and Nymboida – that you would like to see protected. Places such as Nymboida Police Station have heritage value, as does the former Glenreagh Railway Station to name just two items nominated.

Maintenance and changes can still occur with a heritage listing, but listing means funds could be



Top: Historic graves on private property in Tyringham. Above: The Ulmarra War Memorial.

provided to help with costs. Big changes like demolition or change of use would need consultation and agreement before they can take place.

If you have historical information or a property you would like to see protected, if you would like to join our heritage working group, or if you want more information, contact Gina Scheer on 6672 7572 (ginascheer@cosmosarch.com), or Deborah Wray on 6643 0271 (Deborah.Wray@clarence.nsw.gov.au).

Community grants program now open

THERE'S no time to waste. Round one of the 2018/19 Community Initiatives Program is open for applications until midnight on April 30.

If your not-for-profit organisation has a project or initiative between July 1, 2018, and June 30, 2019, you can apply. Multiple events/initiatives are accepted, but applicants can only submit one application per financial year.

Please read the Community Initiatives Program guidelines and donations policy before applying.

Apply online by searching for SmartyGrants on the council website (www.clarence.nsw.gov.au)

For assistance contact the community projects officer, Sammy Lovejoy on 6642 0957 or email sammy.lovejoy@clarence.nsw.gov.au

For all the latest news, a weekly information column is available at www.clarence.nsw.gov.au/weeklyad



BLOCK ADVERTISEMENT REQUEST FORM

Coastal Views & The Daily Examiner

Dates to appear:	Coastal Views – Friday	9-Feb-18, 16-Feb-18
	Daily Examiner – Saturday	10-Feb-18, 17-Feb-18

ULMARRA AND NYMBOIDA FORMER SHIRES AREA HERITAGE STUDY

Clarence Valley Council is preparing and updating a list of heritage places and items within the former Ulmarra and Nymboida Shires. We are seeking your help with this project as Council needs to know which items and places are valued by the community.

You are invited to attend community meetings detailed below. Please bring your photos, stories and information such as letters, newspaper clippings, and event programmes on places of historical and heritage interest within the Ulmarra and Nymboida former shire areas. Any photographs can be scanned and returned to you on the spot.

Interested residents are also invited to join a working group to further assist with the research on heritage places and items within the former Ulmarra and Nymboida Shires.

Community meetings

Ulmarra Weds 21 February 2018.

10.30am – 12 noon

RFS, 15 Coldstream Street, Ulmarra.

Nymboida Thursday 1 March 2018.

10.30am – 12 noon

Nymboida Hall, *Armidale Road, Nymboida*

Grafton Friday 2 March 2018.

10.30am – 12 noon

Clarence Valley Council Offices

Conference Room, 42 Victoria Street, Grafton

Please RSVP for catering purposes. For further enquiries, or if you are unable to attend these meetings and wish to be involved, please contact:

Gina Scheer

Heritage Consultant

Telephone: (02) 6672-7572

Email: Ginascheer@cosmosarch.com

OR

Deborah Wray

Senior Strategic Planner

6643 0271

Email: Deborah.Wray@clarence.nsw.gov.au

**This advertisement was run over two scheduled newspapers,
Coastal Views & The Daily Examiner**

9th and 10th February 2018 and 16th and 17th February 2018

ANNEX D – PROCESS FOR A HERITAGE STUDY

There are 20 steps recommended to successfully complete a Community based heritage study. This checklist has been updated from the 2013 State of NSW and Office of Environment and Heritage, *Heritage Branch Community-based heritage studies: a guide*. It is noted that for certain projects, it may be appropriate to change, delete or add steps to the process.

Step 1	Council contacts OEH to organise funding.
Step 2	Council defines the project's scope, finalises the consultants' project briefs for a project manager and historian, advertises and selects preferred consultants.
Step 3	Project manager gains OEH approval to engage the consultants selected and obtains a copy of the State Heritage Inventory (SHI) Heritage Database.
Step 4	Council notifies the community about the heritage study and advertises for volunteers to join the heritage study working group.
Step 5	The project manager and heritage working group prepare a list of local historical sources for the thematic history (or for a review and update of an existing history).
Step 6	The professional historian engaged for this project prepares the draft thematic local history (or reviews and updates the existing study).
Step 7	The project manager and heritage working group compile a list of known heritage items from existing registers and lists.
Step 8	The project manager uses the draft thematic local history to create a list of known heritage items and looks for obvious gaps to follow up.
Step 9	The council advertises and invites the community to nominate heritage items and to provide further information on known gaps and known heritage items.
Step 10	The council, project manager and heritage working group approach all potential heritage item owners and set up site visits to collect information for all nominated heritage items.
Step 11	The historian uses community input to revise the draft thematic local history and provides advice on local histories for individual heritage items prepared by the project manager and heritage working group.
Step 12	The project manager works with the heritage working group to complete significance assessments, prepare statements of significance and complete heritage data forms for individual heritage items.
Step 13	The project manager, historian and heritage working group finalise the draft heritage study (including the thematic local history, the list of recommended individual heritage items and management recommendations)
Step 14	The council officer sends a copy of the draft heritage study and heritage database to OEH then invoices OEH for a 50 per cent grant payment by the end of the first year of the funding agreement.

Step 15	The council officer and the project manager consult with individual owners of recommended heritage items about the draft report and management recommendations prepared for their property.
Step 16	Council officers and council management review the draft heritage including the management recommendations and heritage items.
Step 17	Council officers send the final heritage study and heritage database to OEH and invoice the remaining 50 per cent payment by the end of year two of the funding agreement.
Step 18	Council officers present the draft heritage study with a covering report to the councillors.
Step 19	Following councillor approval of the draft heritage study, council officers notify heritage item owners and the wider community about the heritage study and undertake a public exhibition and consultation process.
Step 20	The council adopts the study and commences implementing it, including listings on the schedule to the local environmental plan, promotion and incentives.

ANNEX E – RECOMMENDED CONSERVATION AREA MAPS

Ulmarra Heritage Conservation Area Map:



Glenreagh Heritage Conservation Area Map:



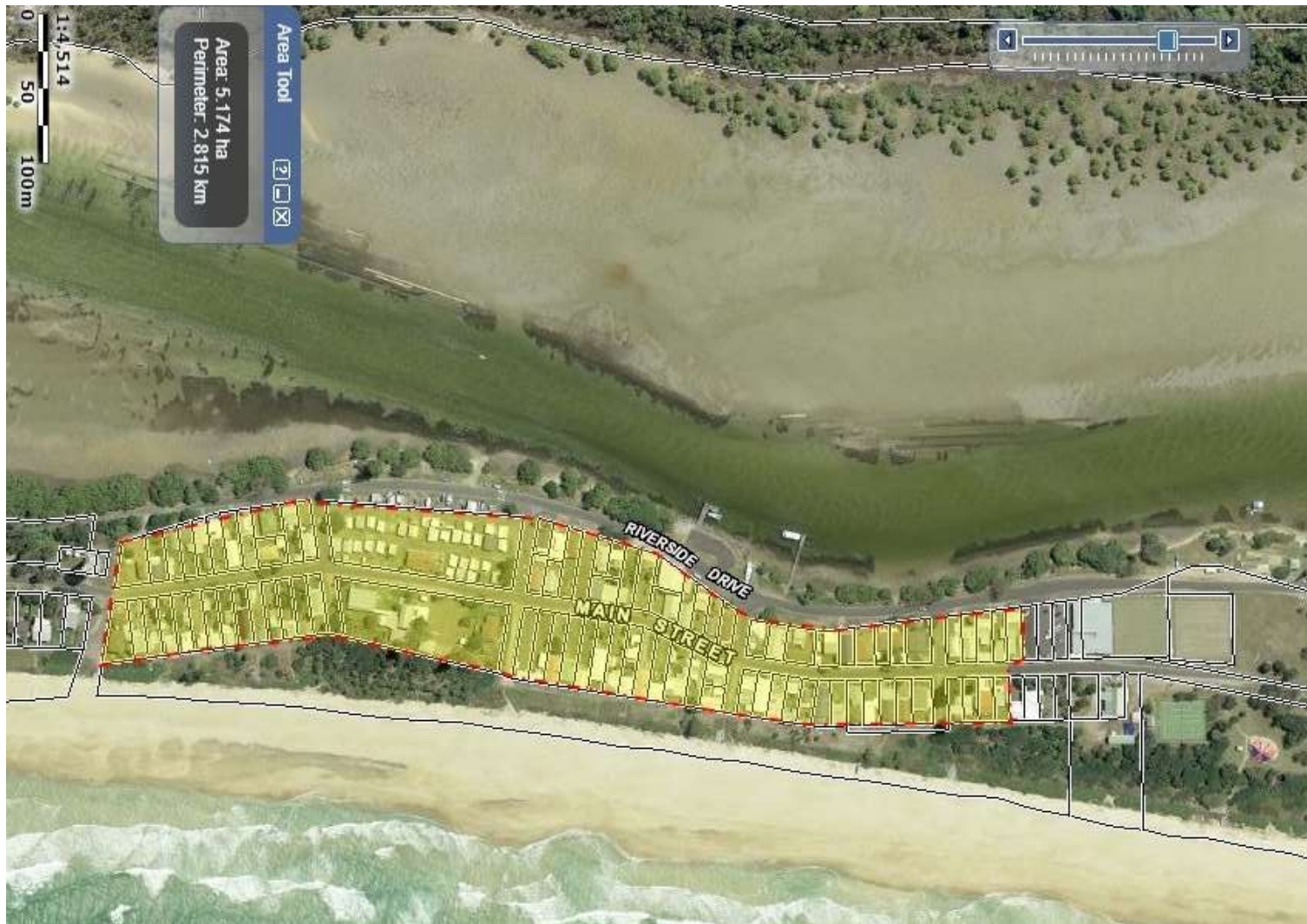
Minnie Water Heritage Conservation Area Map:



Sandon village (south) Heritage Conservation Area Map:



Wooli Heritage Conservation Area Map:



Diggers Camp Heritage Conservation Area Map:

