



PUBLIC EXHIBITION FEEDBACK
HARWOOD RIVERSIDE PRECINCT PLAN
FOR CLARENCE VALLEY COUNCIL

S20-0019
02.02.2021

CLOUSTON associates

PUBLIC EXHIBITION FEEDBACK

The Harwood Riverside Precinct Plan was placed on Public Exhibition for 6 weeks from 11 November to 23 December 2020. The following table outlines the key themes and response to the feedback received.

THEME	COMMENT	CONTACT	RESPONSE
GENERAL SUPPORT	Fundamental concepts are really good	Helen Briscoe	Noted
	It looks good and will be beautiful if it all comes to pass. All in all it is an exciting time for Harwood and the surrounding islands and district so we want to get it right.	Julia Young	
	Looking fantastic and great to see progress in beautiful Harwood a	Kristy Evans	
	Overall I think that the concept and design is great	Kylee Baker	
RIVER FRONT	The river front used to be an amazing place to go and have family picnics and fish from the banks across from the new child care centre but they seem to think its their own carpark now making the space completely unsafe and unusable for residents	Kirsty Evans	Creating new dedicated car parking spaces helps separate vehicles and the parklands. The Masterplan ensures cars no longer take priority on prime waterfront locations, and can be expanded to serve more recreation opportunities.
INDIGENOUS HISTORY	I would like the Dingo totem in honour of the Yaegls	Julia Young	Noted - to be interpreted in the detail design phase.
PLAYGROUND	I cannot see any reason to shift the playground	Julia Young	The playground has been expanded to accommodated wider age group usage. The upgrade provides the opportunity to relocate the playground slightly east, giving more green open space at the end of the Morpeth St vista. It also helps spread the range of activities along the riverfront.
	Signage to mention it is a memorial park and has been renamed to Colvin Payne Park	Julia Young	Noted - to be included as part of the interpretation at the detail design phase.
PARKING	One or two disabled parking spots by the hall	Helen Briscoe	Noted and included.
TOILETS	Further conversion of the external hall toilet to be disabled-friendly would be advantageous	Helen Briscoe	Noted and to be pursued at the detail design phase.
	Consideration given to linking the septic system servicing the Hall to the modern system in the public facilities	Helen Briscoe	

HARWOOD RIVERSIDE PRECINCT PLAN

THEME	COMMENT	CONTACT	RESPONSE
CULTURAL CENTRE	We really really need a cultural centre and we wonder if we could get a grant to buy the RMS building behind the church in Harwood.	Julia Young	For Council consideration.
OVAL	Very disappointed to not see an oval/field space allocated for children to run and kick a ball. The school is not open to the public any more and the cricket oval is not an option.	Kristy Evans	Open grass spaces are allocated on the waterfront for small children as a kick-about space and informal play. For formal sports, discussions to be had with the school and managers of the Cricket Oval.
UNDERBRIDGE	In addition to the bike track, the kids would love to have a skate park, similar to that in Yamba. The latter is well used and a skate park in Harwood would draw many clients to the area	Helen Briscoe	Noted. The underbridge area north of the car park could include skate elements and a basketball half court to cater for different groups. To be considered at detail design phase. New annotation to be added to concept plan for Harwood Village.
	There were talks of possible half court basketball under the new bridge	Kirsty Evans	
	Possibility of lights attached to the bridge	Kirsty Evans	
MARINE HERITAGE	Would like to see more input regarding the Beardmore tug - could be a tourist attraction	Julia Young	The Beardmore's condition means it's unsuitable to be stored outdoors. To be considered by Council.
	Beardmore is a very important part of both the sugar mill and transport history and the Yaegl method of transporting people and produce to and from Ulgundahi island and of course the history in that and the islands twentieth century history. Unsure from the current plans what has occurred in respect of the incorporation of the above	Stan Cousins	
NATIVE TITLE/ CROWN LAND	Land status would need to be investigated before formal advice could be given but it appears some of the waterfront section is on crown land and any works will potentially have compensation to the crown and NT holders	Kylee Baker	Noted. For Council consideration.



Clarence Valley Council

HARWOOD RIVERSIDE PRECINCT PLAN - FINAL CONCEPT PLAN

S20-0019

Issue E 02/02/21



BACKGROUND



Source: Nearmap

The Clarence River extends nearly 400km from the Dividing Ranges in Queensland to Yamba. The Clarence is the east coast's largest river system covering a catchment area of 22,716km² and contains 56 sub catchments.

The Clarence River Way Masterplan was undertaken by CLOUSTON Associates in 2009, positioning the Clarence River as one of the nation's great river experiences.

On its journey to Yamba the river passes through the towns of Grafton, Ulmarra, Cowper/Brushgrove, Maclean and Harwood. The Traditional Owners of Harwood are the Yaegl people, and the Yaegl name for the Clarence River is Berrimba.

Harwood was settled by Europeans in 1838, with logging the early economic driver. The key employer in the town has been sugar cane since CSR built their mill in 1877. The mill is now the oldest continuously operating sugar mill in Australia.

As a river town the waterway was important to the sugar cane industry. Today the river provides a scenic outlook for the residents and visitors of Harwood.

The recent Woolgoolga to Ballina project has seen an upgrade of 155km of the Pacific Highway. As part of this upgrade, a new bridge has been constructed at Harwood that crosses the Clarence River. The height of the new bridge allows for continued navigation of masted boats up river.

The new Harwood Bridge offers the village an opportunity to leverage it's river location, Aboriginal and built heritage to increase its viability as a place to live, visit and invest.

STUDY AREA



Source: Nearmap

The project focuses on the area the riverside precinct of Harwood.

Specifically, the study area is comprised of:

- The Clarence River foreshore between the old ferry ramp and the old cane loading wharf
- The Village precinct along Morpeth Street from River Street/ Martins Point Road as far north as Harwood Public School
- A section of the link road between Morpeth Street and the old Pacific Highway that denotes a sense of arrival to the village
- The Harwood Community Hall and surrounds
- Colvin Paine Playground (Mill Road Reserve)



THE PROJECT



PROJECT REQUIREMENTS

The purpose of this project is to develop a concept master plan that increases the viability of Harwood as a place to live, visit and invest. There are a number of opportunities for Harwood.

Leveraging cultural and heritage development:

- Building upon Aboriginal culture and built heritage assets and investigate the options for a cultural centre
- Working with the community to establish locally driven sustainable heritage tourism opportunities
- Making Harwood one of the many river stops in a Clarence River experience

Making it easier to get to the river:

- Revitalising the river edge
- Improving and expanding options for pedestrian river access and environment

Improving first impressions:

- Developing opportunities for the bridge crossing
- Re-imagining the streetscape for human scale - comfortable, accessible, active public spaces that encourage pedestrian activity from tourists and locals

Creating new opportunities:

- Promoting Harwood as a place to tell the sugar cane story
- Investigating opportunities for a toilet stop as outlined in the Economic Development plan
- Reflecting the broader regional themes of the Clarence River Way - continuous culture, productive landscape, life from the river, creative community and history of play

Providing a catalyst for development and investment:

- Building upon the edge of the Pacific Highway location
- Collaborating with local business networks
- Expanding water based activities and waterfront parkland, taking advantage of the large single ownership of the waterfront.

PROJECT METHODOLOGY

The project has four stages.

Stage 1: Research & Analysis

- Review of existing documents, research, plans, policies and reports
- Site analysis - measure and map land and water activities, public spaces, building/street edge activation and movement systems, identify existing utilities, amenities, services, facilities and structures
- Develop initial concepts



Stage 2: Preliminary Consultation

- Clarence Valley Council stakeholders workshop 3 August 2020
- Community consultation drop in session 3 August 2020
- Phone consultation with key stakeholders
- Respond to community feedback



Stage 3: Draft Plan

- Prepare draft Harwood Riverside and Village Precinct Plan
- Public exhibition



Stage 4: Final Plan

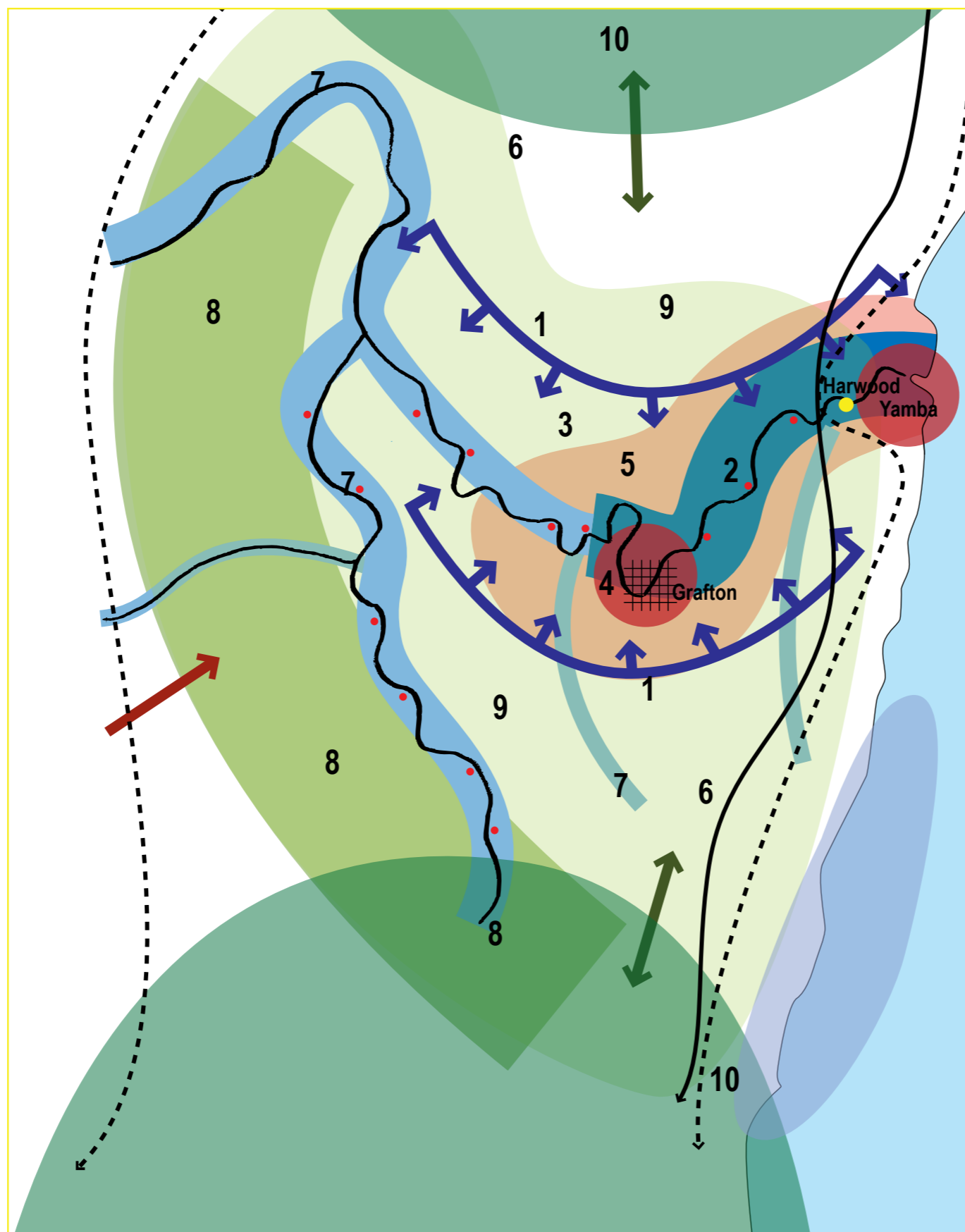
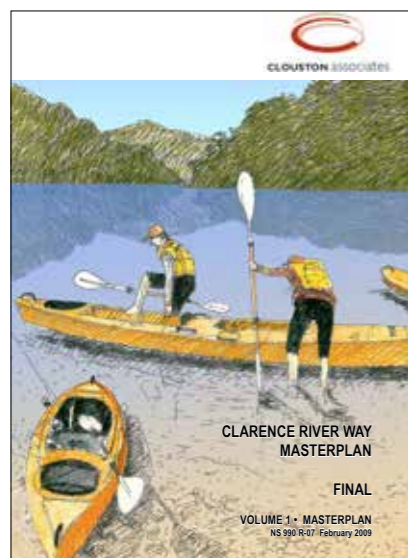
- Respond to public exhibition feedback
- Final Harwood Riverside and Village Precinct Plan adopted by Council

CLARENCE RIVER WAY MASTERPLAN 2009

The Clarence River Way project is a destination strategy that seeks to leverage the region's greatest asset, the Clarence River, as the primary development driver.

The top two strategic ideas are to refocus upon the river, and develop the township hubs along the river.

The townships of Ulmarra, Cowper, Brushgrove, Lawrence, Maclean and Harwood are key destination stops along the river, between Grafton and Yamba.



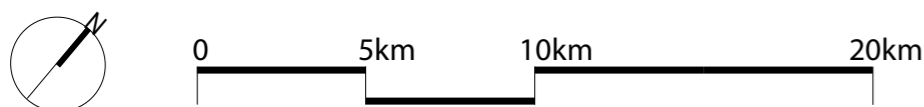
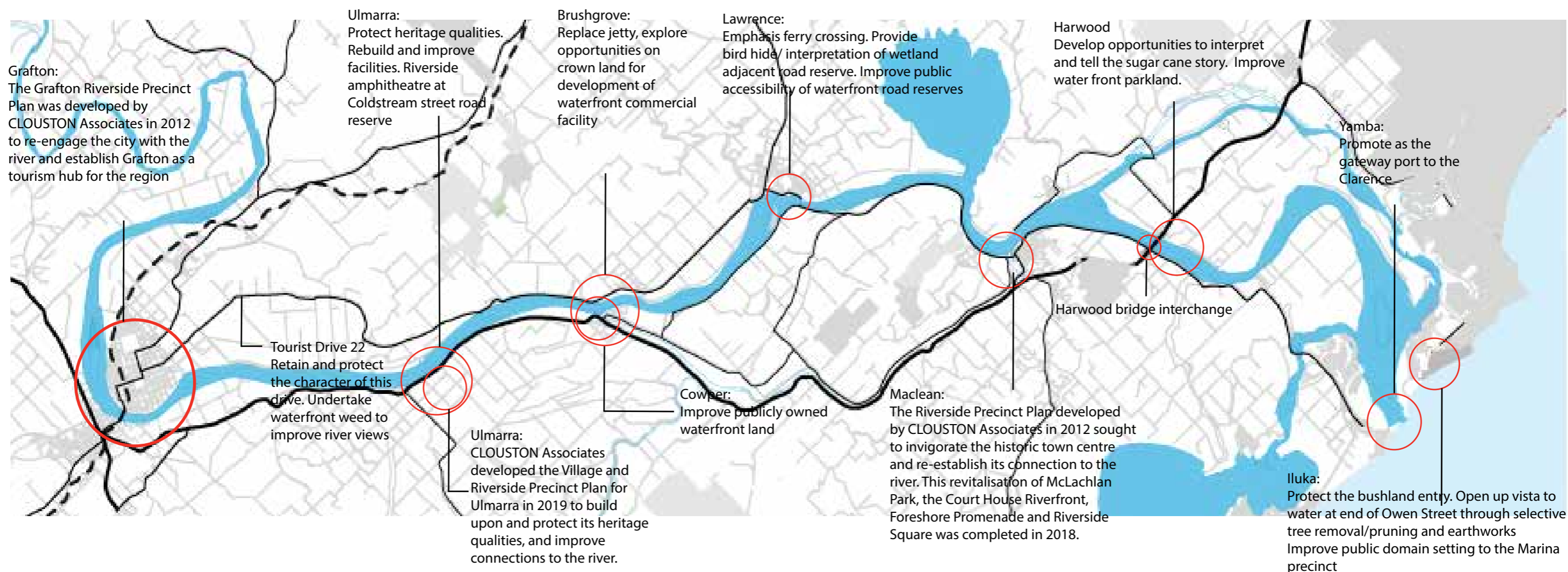
1. Refocus upon the Clarence River for destination development.
Establish the Clarence River as the primary driver of destination development.
3. Develop the township hubs along the lower reaches. Build upon the strong assets between Grafton and Yamba and develop a series of tourist hubs supporting land and river based activity.
4. Promote Yamba as the gateway port to the Clarence. Promote Yamba as a port. Capitalise upon existing tourism potential, infrastructure and market awareness.
5. Reposition Grafton as a "River City" Tourist destination. Reposition Grafton as a tourist hub around the concept of a 'River City'.
6. Develop a Clarence River Way touring region. Simplify touring routes down to a single "touring region" focused around the core tourism hubs, delivering on CRW themes.
7. Capitalise upon visitors using the Pacific Highway Touring Route. Capitalise upon the Pacific Highway Touring Route and develop east west connections and partnerships.
8. Develop the upper reaches of the Clarence. Develop the upper reaches through the provision of greater visitor access and infrastructure.
9. Develop opportunities in the Wilderness Arc. Develop opportunities in the Wilderness Arc surrounding the Valley that value add to the Clarence River Way.
10. Create linkages from the hinterland to the Clarence. Create linkages between the river and core industry sectors, facilitating access and infrastructure investment in key nodes.
11. Promotion and regional linkages. Promote the Clarence River Way and build upon regional links with the Green Cauldron, Rainforest Way

Clarence River Way Masterplan Strategic Intent

CLARENCE RIVER WAY MASTERPLAN 2009

Specific actions that relate to Harwood include:

- Ensuring the Harwood bridge upgrade allows for continued navigation of masted boats up river of the bridge.
- Investigating options to utilise the large opens space at the Harwood Bridge for a planted gateway.
- Developing opportunities to interpret and tell the sugar cane story
- Improving the water front parkland
- Bringing visitors off the main north/south highways into the Clarence Valley
- Ensuring there is clear signage identifying the Clarence River on the Harwood Bridge
- Encourage use and appreciation of the river
- Develop Indigenous cultural tourism as a continuous culture related to the river
- Develop integrated river hub stops
- Improve visual connection to the river
- Greatly extend the range of river access points along the river



HARWOOD COMMUNITY ECONOMIC DEVELOPMENT PLAN 2019

This plan addresses the Harwood community aspirations and objectives regarding the upgrade of the Pacific Highway

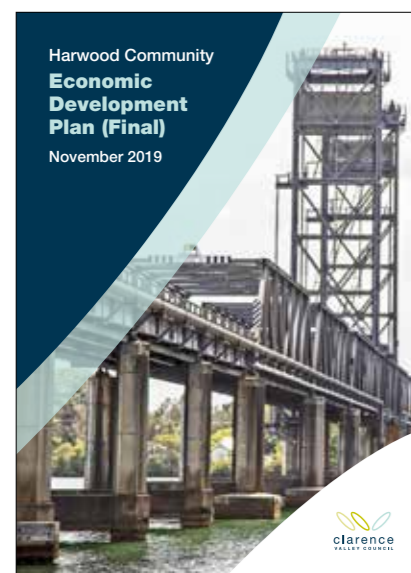
Issues, concerns, strengths and opportunities raised by the community were developed into a SWOT analysis.

Strengths

- Clarence Riverside aspect is appealing to visitors and residents
- Convenient location on the edge of the M1 with access via road and river
- Passionate community with a strong sense of local pride
- Local public school appeals to young families
- Already home to a number of visitor attractors including hospitality, accommodation, attraction and retail businesses

Weaknesses

- Lack of interpretative signage and no village heritage trail
- Prone to flooding
- Lack of shops and businesses that service local needs
- Need to travel to other towns for health and medical services



Opportunities

- Riverine location and heritage
- Convenient location on the edge of the M1 and close to Yamba and Maclean
- Potential to attract Recreational Vehicle (RV) visitors
- Harwood business networks encouraging collaboration, training and collaborative marketing
- Potential to promote Harwood's heritage and water based attractions
- Potential to encourage bicycle touring
- Potential to improve infrastructure, development of parks, river front and toilet facilities
- Ferry and water based business potential
- Community Hall for functions
- Creation of Harwood Riverside Precinct Plan as identified in Clarence River Way Masterplan
- Tell Harwood's story - Interpretive signage celebrating Aboriginal, build and riverine heritage
- Leverage off the opportunity for tourists to get off the M1
- Upgrade of Harwood wharf facilities to encourage more water based visitors and tourism
- Potential to develop a viewing platform for new Harwood Bridge with brown tourism signposts from the M1
- Attract day trippers from other Clarence Valley towns

Threats

- Lack of an overarching plan means funding for 'shovel ready' projects is missed
- Ad hoc design (no planning or plan)
- Apathy, doing nothing
- Lack of promotion
- Fragmentation of community

Community Actions

Harwood residents demonstrated pride in their community and desire for the village to be sustainable into the future. Some of the actions they proposed in the Economic Development Plan are:

- Develop a brand/online presence/phone app, preserve village history and create heritage trail, RV camping
- Art and sculpture festival, concerts with local musicians, harmony day, movie nights at Harwood Hall, pony rides, cultural walks along the river, garage sales, annual Harwood Sugar Festival, local art exhibitions and workshops
- Viewing platform of new bridge (brown tourism signage)
- Beautification of riverside and waterfront area, parklands showcasing flora and fauna, sculpture park, waterpark, covered picnic areas and BBQs along the river, playground
- Aboriginal interpretive garden, community garden and bush tucker
- Cultural centre from First Peoples to present day (in old RMS Building?), better facilities at Community Hall (septic/waste facilities), loo with a view/toilet facilities, Mill Heritage Museum
- Aboriginal interpretive signage, cane cutters history celebrated through interpretive signage
- Walking tracks and footpaths (village precinct)
- Restore and repair wharves and ramps,
- Car parking under the bridge (inc. overnight truck parking)
- Cricket oval for juniors and lower grades
- Cycleway from Maclean to Harwood
- Tourist Drive



PHOTOGRAPHIC APPRECIATION - RIVER AND BRIDGE CONNECTION



Large expanse underneath new bridge



Under utilised space under old and new



Turning circle in prime riverfront location



Old car ferry wharf still in use as a boatramp



Outdated bus stop and picnic shelter clutter views to the river



Colvin Paine Playground due for an upgrade



Old car ferry wharf used as a boatramp on the south bank opposite Harwood



Old public wharf with no heritage interpretation signage



New pontoon



Large open space parklands viewed from the pontoon

PHOTOGRAPHIC APPRECIATION - VILLAGE AND SURROUNDS



Shops and village facilities



Historic Harwood Water Brigade Hall (1906) is used for well used for weddings, funerals, school activities (Harwood and Chatsworth schools), line dancing, ballet, ANZAC day ceremonies, farmers meetings. It's elevated position means it has never flooded.



Harwood sugar cane mill



Antiques shopfront



Harwood Hotel



Cricket ground with views to the sugar cane fields



New childcare centre



Opportunities to get close to the water



War memorial positioned on a narrow portion of the

SITE ANALYSIS/ISSUES



SITE ANALYSIS/ISSUES

1. Riverfront parklands need revitalising

- Parkland spaces are restricted by roads and parking
- Key vistas to the waterfront are limited
- Vegetation and natural ecosystems are degraded



2. Harwood's story is untold

- No interpretation of the Yaegl story or the sugar cane story
- Limited information about the many rich cultural assets of the town - old sugar cane wharf, Harwood Community Hall, Sugar Mill, boat ramp, ferry wharf, cricket ground



3. Underutilised space under the new Harwood Bridge

- Large expanse of open space with impressive views under the two bridges



4. Limited pedestrian paths

- No continuous path of travel along the waterfront
- Breaks in footpath connection in the village



5. Lack of facilities

- No public toilet, outdated bus stop and playground
- Lack of seating and shade
- No central gathering events space



6. Parking and vehicles take priority on the riverfront

- Adhoc parking arrangements
- Parked cars take priority on prime waterfront locations



OPPORTUNITIES





DESIGN PRINCIPLES

Create a sense of arrival



- Establish Harwood as an attractive port of call for visitors to the region
- Improve first impressions as you approach Harwood by road or by river
- Provide a legible sense of arrival, orientation and directions
- Provide meaningful and memorable experiences for both locals and visitors

Connect to the river



- Maintain and improve physical and visual access to the waters edge
- Provide launching and mooring facilities for a range of boat users
- Provide a continuous path of travel along the river edge
- Provide a variety of river interactions and experiences
- Offer viewing areas that take advantage of the unique vantage points of the two bridges

Create riverfront parklands



- Provide a series of recreational open spaces that address the river
- Improve infrastructure along the riverfront - seating, shade, playground, toilet facilities
- Build a sense of community - activities, events, programmed space as well as flexible open space
- Create a cohesive palette of riverside park furniture and materials
- Improve car parking for vehicles and trailers so they don't undermine the parklands

DESIGN PRINCIPLES

Promote the town's assets



- Use the streets, paths and open space to enrich the experience of locals and visitors
- Provide a linked path network from the river to the village shops, school and cricket ground.
- Leverage the riverfront location and heritage charm
- Make the most of Harwood's bridges
- Use selective lighting at night

Tell the town's story



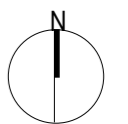
- Tell the Yaegl story of the area - past and present - and promote a continuous Aboriginal culture and involvement
- Reveal the European cultural heritage elements within Harwood and surrounds such as the sugar mill, canefield, old public wharf and old car ferry wharves on both banks
- Foster engagement from the local community known for their strong sense of pride

Look after the waterway

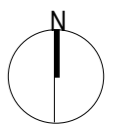


- Promote endemic vegetation
- Rehabilitate the river vegetation
- Use robust design solutions that can withstand regular flooding and inundation
- Use low maintenance, durable materials appropriate for the riverine setting
- Allow for effective management and maintenance

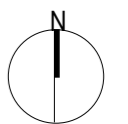
CONCEPT PLAN - FACING RIVER BANKS



CONCEPT PLAN - HARWOOD VILLAGE



LANDSCAPE CONCEPT PLAN - RIVERFRONT PARKLANDS WEST



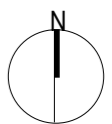
CONCEPT - EVENTS SPACE



CONCEPT PLAN - RIVERWALK EAST



- 1. New boat ramp
- 2. New pontoon
- 3. Bridge viewing area
- 4. Car and boat trailer parking area with lighting
- 5. Amenities building
- 6. Continuous path along the river, connecting to the cricket oval
- 7. Restored forecourt to the Harwood Hall with disabled parking
- 8. Defined car parking bays
- 9. Restored old public wharf
- 10. River steps
- 11. Public art and interpretive signage
- 12. Seating
- 13. River vegetation restoration
- 14. War memorial



CONCEPT - RIVERSTEPS



DESIGN PRECEDENTS - RIVERFRONT PARKLANDS WEST



Opportunities to extend out to the river (Lake Gillawarna Sprout)



River edge walk (Maclean)



Wayfinding signage (Fairbridge, CLOUSTON Associates)



Picnic shelters and play equipment by the waterfront (Woodburn)



Upgraded nature play equipment (Willowdale, CLOUSTON Associates)



Open grass areas expansive views across the river (Port Macquarie)



Extend down to the water (Woodburn)



Separate parking from parklands



Public art (Bungarribee, CLOUSTON Associates)

DESIGN PRECEDENTS - UNDERBRIDGE



Bridge viewing (Iron Cove Rozelle)



Amenities building (Ballast Point Park)



Mountain bike pump track



New boat ramp and pontoon (Rose Bay)



Pontoon (Woodburn)



Underbridge playspace (Caulfield to Dandenong ASPECT Studios)



Car and trailer parking (Rose Bay)



Grassed trailer spaces



Lighting and seating under the bridge (John Whitton Bridge)

DESIGN PRECEDENTS - SUGAR TRAIL



Extend down to the water (Narrabeen lagoon ASPECT Studios)



Extending down to the water's edge



Bollards (Macquarie Lighthouse)



Sandstone blocks to separate road from parklands



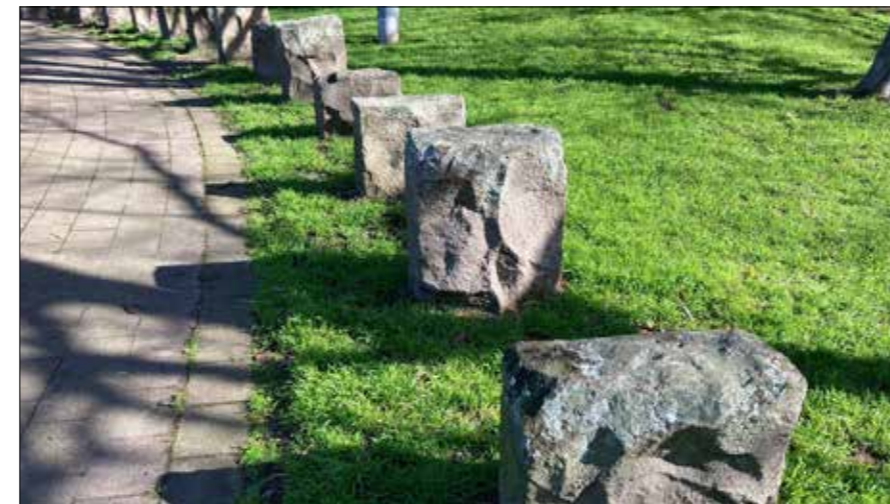
Vegetation rehabilitation (Armstrong Creek Gbla Landscape Architects)



Seating on old sugar cane wharf



Tree-lined footpath connection to Cricket Oval



Sandstone bollards



Interpretive signage

PLANTING SELECTION

Australian Revegetation Trees



Acacia floribunda
White Sallow Wattle



Lophostemon suaveolens
Swamp Turpentine



Allocasuarina glauca
Swamp Oak



Eucalyptus tereticornus
Forest Red Gum



Melaleuca quinquenervia
Broad-Leaved Paperbark

Revegetation Small Trees & Shrubs



Leptospermum polygaifolium
Creek Tea Tree



Breyenia oblongifolia
Breyenia



Melaleuca alternifolia
Tea Tree

Revegetation Sedges & Rushes



Bolboschoenus fluviatilis
Marsh Club-rush



Juncus kraussii
Sea Rush



Carex appressa
Tall Sedge



Schoenoplectus validus
River Club-Rush



Lepironia articulata
Grey Sedge



Phylidrum lanuginosum
Frogsmouth



Gahnia sieberiana
Red-fruited Saw Edge



Carex gaudichaudiana
Carex



Baumea juncea
Bare Twigrush



Cyperus lucidus
Leafy flat sedge

Revegetation Grasses & Lilies



Lomandra longifolia
Spiny Mat Rush



Dianella spp.
Flax Lilly



Phragmites australis
Common Reed

Protect Existing Mangroves



Aegiceras corniculatum
River Mangrove



Avicennia marina
Grey Mangrove



Bruguiera gymnorhiza
Large-leaved mangrove



Excoecaria agallocha
Milky Mangrove

Vines



Derris involuta
Native Derris



Flagelaria indica
Whip Vine

All plants sourced from the Clarence Valley Council Clarence River Floodplain and Estuary Native Plant List



Consultation

CONSULTATION

CLOUSTON Associates led the community and stakeholder consultation for the draft plan, with the aim to:

- create stakeholder awareness
- encourage stakeholder participation
- ensure ideas, opportunities and issues are identified and recorded
- adapt the draft plan where necessary to accommodate feedback

As part of the consultation, a workshop was held with key staff from Clarence Valley Council on 5 August 2020 in Maclean.

Following the Council workshop, a community drop-in session held at the Harwood Community Hall, attended by community members including local residents, sugar cane farmers, the Harwood Community Hall Secretary, Walla Walla Bing Bang Early Childcare Centre owner and employees, the Harwood Hotel owner and Councillors.

Other stakeholders and community members have been contacted via phone, email and videoconference, including:

- Birrindi Island Harwood Island Committee
- Yaegl Traditional Owners Aboriginal Corporation
- Glenda Macphail - Local Yaegl Woman and committee member
- Department of Planning, Industry and Environment - Crown Lands
- Destination North Coast NSW
- Transport for NSW
- Department of Primary Industries Fisheries
- Harwood Marine
- Barbara Endacott - Ashby resident

The updated Harwood Riverside Precinct Plan was placed on Public Exhibition for 6 weeks from 11 November to 23 December 2020. Four responses were received.

The following tables outline the key themes emerging from the initial consultation and the public exhibition feedback, along with the implication and response for the Precinct Plan.



INITIAL CONSULTATION FEEDBACK

THEME	COMMENT	FROM	IMPLICATION/RESPONSE
GENERAL COMMENTS	The majority of community members support the precinct plan - "It's lovely - I'm impressed" - and felt it exceeded their expectations - "I was just expecting a few trees"	Community	Noted
	Some great initiatives have been thought through to elevate the Harwood Bridge and accompanying riverside precinct into being a significant landmark for the North Coast	Destination North Coast	Noted
	Native title has been determined to exist in the land below the mean high water mark – consultation is required with the Yaegl Native Title holders	Crown Lands, Yaegl Traditional Owners	Further discussions required between Council and the Yaegl Traditional Owners.
	The plan works well and can be built in stages	Council	Develop a staging plan
YAEGL CULTURE	Need a strong connectedness to Yaegl people, and a way to share Yaegl information and stories. The precinct needs to be created in conjunction with the Yaegl nation. Representation along the river - cultural sites and boundaries, totems of flora and fauna - is paramount to the continuance of Aboriginal culture in Yaegl Country.	Community	Incorporate Yaegl culture by telling the stories through the landscape. Seek guidance and input from the Yaegl community at each step of the design process.
	There are proud, strong Yaegl values associated with Harwood - it is a recognised Aboriginal site with many cultural elements, a birthplace to the Yaegl tribe. "We love the Clarence - it's a women's designated area and we meet at the picnic shelter"	Yaegl Traditional Owners	The important social and cultural values of Harwood need to be protected. Any furniture that is removed (eg picnic shelters) need to be replaced with suitable gathering areas.
	There were several suggestions for a new Yaegl cultural centre to display artefacts historical information and objects relevant to the history of Harwood. There was a suggestion that a Keeping Place could possibly be located in Yamba.	Community	No new cultural centre is proposed at this stage. For Council consideration.

THEME	COMMENT	FROM	IMPLICATION/RESPONSE
EVENTS SPACE	Very strong support for the new events space - "It's a beautiful area, great for events"; "Love this space"; "It will be a stunning area on the river frontage and will have pride of place for many events"	Community	Noted
	There were many comments about how the events space could be used - for yarning circles, story telling, reflecting areas necessary and beneficial for cultural gatherings, celebrations, ceremony, community events and a place of harmony for all. Several people commented how the space would be perfect for markets. Some specific events suggested were Harmony Day, art exhibitions and pop-ups, "Sculpture on the River", "Eat the Street" food stalls, a wooden boat festival, a sea plane festival and a river lantern parade.	Community	It will be important to keep this as a flexible open space that can adapt to a range of events. It also needs to work as a passive recreation space when no events are taking place.
	There was one suggestion that the plan lacks integration with the pub.	Destination North Coast	The Hotel was very much at the forefront of the design, and one of the key reasons for moving the turning circle clutter at its doorstep. The open space in front of the pub is the prime river viewing area, which is why it is being rejuvenated from an informal car park right to an events space.
	There was a request for a covered stage area with natural amphitheatre seating, back stage loading bay. Another community member suggested a floating stage for music and fireworks performances. A storage shed along the river for potential market equipment/tents/shades/tools was also proposed.	Community	The flat terrain and floodplain isn't suitable for an amphitheatre and there is concern that a permanent stage structure would obscure views to the water. It may be worth examining the feasibility of a floating river stage, as outlined in the Clarence River Way Masterplan.
	A grand opening event to aid the revival of culture in the areas, with ARC Dreaming Aboriginal dance theatre in collaboration with the Yaegl community.	Community	For Council consideration

INITIAL CONSULTATION FEEDBACK

THEME	COMMENT	FROM	IMPLICATION/RESPONSE
BOATING	There was general acceptance that the existing boat ramp and pontoon could still be used for light water craft, but not for boats that require vehicle access.	Community	Retain existing boat ramp and pontoon
	Consider reusing existing river access structures.	Fisheries	
	Need to consider currents in new boat ramp location	Council	For Council consideration
	Existing water carting refill under bridge could be closed and relocated if it conflicts with new pontoon	Council	
	Potential to have moorings	Council	
	Suggestion to include anchor points/ hold points on the river for flood safety	Harwood Marine	
PLAYGROUND	There was strong support to upgrade the current playground. The childcare centre indicated they would use the new playground during school term and also vacation care in the holidays.	Community	Noted
	There was general acknowledgement that the existing play equipment is not adequate and too plastic. More developed play equipment to assist children's physical, mental and co-ordination skills is preferred - "Adventure playground, not plastic equipment, and no hot metal slides".	Community	Explore adventure, nature play at the detailed design phase
	There's a need for shade in the playground, and a request to fence the playground, as not many playgrounds in the region have fences.	Community	Consider shade (natural or architectural) and fencing (partial or complete) as part of the detailed design
	Keep the Colvin Paine name	Community	Understand the significance of the name and use appropriate interpretation.
	There were suggestions to include meaningful elements into the playground eg "The Dingo is our totem, it marks who we are as Yaegl people, and could be incorporated in the playground in some form" Or "consider a large canoe structure incorporated into the play area"	Community	involve the community in the new playground at the detailed design phase
	Request for gym equipment on the foreshore	Community	Risk of too much clutter on the narrow foreshore. Potential to include under the bridge area.

THEME	COMMENT	FROM	IMPLICATION/RESPONSE
UNDER BRIDGES	There was general consensus that the proposed space under the bridges would be well utilised - "Really good design under bridge", "Love the bridge viewing area". The mountain bike/skate park area was seen as a good idea - "it suits 3-year olds, 14-year olds, 40-year olds"	Community	Noted
	Community use of the area under the bridges could potentially result in less graffiti and vandalism which is seen as a tangible benefit of a well-developed plan for future use around the two bridges	Transport for NSW	Noted
	Need continued ability to maintain access to Pier 24 (immediately adjacent to River St). This pier provides access to one of the modular expansion joins on the Harwood Bridge.	Transport for NSW	Ensure access to Pier 24 isn't impeded.
	A suggestion to light up the bridge with Aboriginal patterns on the poles.	Community	Noted
	More needs to be made of the viewing platform and to take it to the next level a cafe could be included - attract passing travellers to this very instagramable location.	Destination North Coast	Aim is to keep the water's edge accessible and open rather than adding more buildings. A portable coffee cart may be more suitable or utilising of the existing buildings on River St.
	Concerns with security of boats parked under the bridge/distance to the pub	Council	
CRICKET	One request for a new cricket ground adjacent to current oval with synthetic turf.	Community	For Council consideration
TOILET	Strong calls for a public toilet. Proposed toilet facilities were welcomed - "we're sick of having to go into the pub to use their toilets". There could be issues locating a toilet on the floodplain.	Community, Council	Noted

INITIAL CONSULTATION FEEDBACK

THEME	COMMENT	FROM	IMPLICATION/RESPONSE
HARWOOD HALL	The Hall is currently well used for weddings, funerals, wakes, school activities (Harwood and Chatsworth schools), line dancing, ballet, ANZAC day ceremonies, Sugar Mill farmers meetings, and has never flooded.	Community	Noted
	There were many requests for disabled parking at the Hall	Council, community	Ensure disabled parking area outside the Hall.
	There was a suggestion to 'improve' Harwood Hall with cantilevered decks and glass panels facing the river. Also requests for disabled access to the Hall and for the Hall toilets.	Community	The Hall is heritage listed and alterations to the building are out of scope of this project. Council to consider disability access.
	Any proposed extensions/viewing deck using Harwood island hall will require consent of Crown Lands. A licence may be required from Crown lands to Council for any viewing platforms and walkways/forecourt to the community hall.	Crown Lands	
RIVERSTEPS	There was a very positive response to the steps on the old public wharf - "Love the river steps", "It has views to the entrance of the river"	Community	Restore the old public wharf and incorporate seating.
	Consider rehabilitation of redundant structures.	Fisheries	
PEDESTRIANS AND RIVERWALK	Upgrading and linkage of the assets along the waterfront all appear logical	Destination North Coast	Noted
	It's important not to alter the original shoreline	Council	Keep the original shoreline in tact
	Any structures below the mean high water mark will require a licence from Crown lands	Crown Lands	Survey will be required to identify the mean high water mark
	There was a request for walking circuits around town, intertwining, multiple heritage trails including the Petticoat Lane link. Also suggestion for street lighting for evening walks.	Community	Incorporate the Petticoat lane link in the walking circuit. Use selective lighting at night.
	There were a couple of recommendations for a boardwalk and viewing platforms, linking up with proposed path that meanders through the wetlands.	Community	To limit disturbance, the riverwalk will be adjacent to the river rather than over the river. pontoons and jetties can be used as additional viewing platforms.

THEME	COMMENT	FROM	IMPLICATION/RESPONSE
INTERPRETATION AND PUBLIC ART	General consensus that there's a need to improve signage, show attractions, and let people know what townships and islands are up and down the river.	Community	Develop a wayfinding and interpretation strategy for the detail design
	<p>Incorporate the Yaegl story through totem representation and paths along Berrimba (Yaegl name for the Clarence river). A winding path joining stories of creation and cultural life, from the head of the fresh waters down to the sea - a giant eel of the dreamtime created the waterways. Totems, songlines and stories such as:</p> <ul style="list-style-type: none"> - Waanjay Myrall (golden dingo), wedge tail eagles, kangaroo, wallaby, echidna goanna, brolga, emu, red belly black snake, carpet python, kookaburra, black cockatoo, koala, owls, thorny frog mouth, cat fish, grass tree, ants - Willy wagtail, cockatoo (bringers of rain), sea eagles, prawns, mullet, jewfish, flannel flower, she oak, water dragon, paperbark, geebung, bracken, soap bush, cormorant, ducks (bridge and river crossing totems) - dolphin, shark stingray, bream, mullet, turtle, crab, yellow moth (saltwater dreaming totems) - Giant fig tree and Dirrangin (witch) story about the need to let the Clarence waters flow - Ngulgundahi island stories - full moon canoe races, games, ceremonies, seasonal corroborees based on cyclic seasonal floods and sharing way of life 	Yaegl Community	Involve the Yaegl community in developing suitable interpretation so that visitors who walk along the river will leave with a greater understanding of the significance, history and value of the site
	There was a strong emphasis to include sculptural elements to boost local art. Use local indigenous artists to assist in manufacture of canoes and related artworks, Yaegl mosaics on river steps and throughout the foreshore, tiles painted by local kids with local dreaming stories and illustrations along the path	Community	Involve the local community in developing public art at the detail design phase

INITIAL CONSULTATION FEEDBACK

THEME	COMMENT	FROM	IMPLICATION/RESPONSE
INTERPRETATION AND PUBLIC ART	The whole reason Harwood is here is because of the river. Include some interpretations telling people the marine history. Consider significance of how the bridge was located where people would have crossed in canoes - at a narrow point with less currents. Significance of why crossing would be made - births, deaths, marriage, bartering, ceremony, celebration	Harwood Marine, Community	Tell the marine story as part of the interpretation
	Include interpretive signage outlining the importance of key fish habitats displayed at strategic locations within the riverside precinct.	Fisheries	Incorporate the marine habitat in the interpretation
	Include interpretive signage about the old public wharf (it still has a relic peg for boats), former baths near the existing playground, memorial elements of the old bus shelter, corduroy bridge, cricket oval	Community	Incorporate interpretive signage on significant heritage items along the heritage trail
	The community are proud of the Beardmore tug, with several calls retain the boat in Harwood and display it under the new Harwood Bridge.	Community	The Beardmore will most likely disintegrate if exposed to the outside elements.
VEGETATION	Several comments to use endemic species and help restore the endangered ecological systems. Forrest red gums (currently seen on the cricket oval) are the main stay of the floodplain	Community	Recommend using endemic species
	Appreciation for the new street trees, with requests for local shade trees, fast growing, advanced plants. Reconsider proposed street trees outside the post office as it will make it difficult for trucks to turn. Incorporate "spectacular" trees to be noticed from the M1 (eg Corymbia ficifolia)	Community	Remove proposed street trees outside the post office
	Suggestions for a community garden, an Aboriginal bush tucker garden, involving Yaegl traditional owners in bush regeneration	Community	Involve Yaegl Traditional Owners in species selection of plants
	No removal of any native vegetation for views, protect the mangroves	Community	Limit tree removal where possible
FISH HABITATS	Any dredging and reclamation works could harm marine vegetation. Consider aligning the riverwalk and river steps within previously disturbed areas. Avoid removing mature mangroves. There should be no net loss of habitat - any unavoidable impacts must be offset.	Fisheries	Design to have minimal impact eg limit length and number of piles for new boat ramp and pontoon.

THEME	COMMENT	FROM	IMPLICATION/RESPONSE
ROADS, TRAFFIC AND PARKING	There was general support for formalising car parking so that vehicles don't obscure the parklands	Community	Noted
	Request to slow the speed on the roads, and include traffic control speed humps	Community	For further discussion with RMS
	Tidy up streetscape - "Roads should be fixed, pipes repaired, drainage improved"	Community	Noted
COMMERCIAL ACTIVITY	Encourage catering and local eating opportunity, Attract more business, possibility of reopening the shop fronts	Community	Noted
MATERIALS, FINISHES, FURNITURE	Use sandstone blocks similar to Maclean, timber material to be sourced from local mills, and materials suitable for flooding	Community	Consider suitable materials, finishes and furniture at detail design phase
	Need enough seating for older local population to sit during walks. Position seatomg in relevant locaitons with local dreaming stories and information pertaining to that particular viewpoint	Community	
	Include sculptured tables and chairs and circles, durable and weather tolerant canoe seating tha t complements the theme and history of the river, raise half moon seating for elders, ceremonial centrall fire pit with sealable saftey lockable lid	Community	
PRECEDENTS	Market stalls in Bellingen, markets by the lake at Lennox Head, exercise equipment in Yamba, skate park in Yamba, community centre at Teagardens	Community	Noted
SURROUNDS	Need to consider what is happening on the other side of the river	Council	Consider upgrade to the parklands surrounding the boatramp on the Maclean ride of the river.
	Happy to discuss any consideration of the connection across to the opposite side of the river in the Yamba Rd precinct	Transport for NSW	
BIKES	Need to emphasise the connection between Yamba and Maclean by bike	Council	Improve wayfinding bike signage
	Carrying bikes from the street level up stairs to the bridge cycleway is difficult.	Community	New bike ramp infrastructure is prohibitively expensive and intrusive at this stage.

PUBLIC EXHIBITION FEEDBACK

THEME	COMMENT	CONTACT	RESPONSE
GENERAL SUPPORT	Fundamental concepts are really good	Helen Briscoe	Noted
	It looks good and will be beautiful if it all comes to pass. All in all it is an exciting time for Harwood and the surrounding islands and district so we want to get it right.	Julia Young	
	Looking fantastic and great to see progress in beautiful Harwood a	Kristy Evans	
	Overall I think that the concept and design is great	Kylee Baker	
RIVER FRONT	The river front used to be an amazing place to go and have family picnics and fish from the banks across from the new child care centre but they seem to think its their own carpark now making the space completely unsafe and unusable for residents	Kirsty Evans	Creating new dedicated car parking spaces helps separate vehicles and the parklands. The Masterplan ensures cars no longer take priority on prime waterfront locations, and can be expanded to serve more recreation opportunities.
INDIGENOUS HISTORY	I would like the Dingo totem in honour of the Yaegls	Julia Young	Noted - to be interpreted in the detail design phase.
PLAYGROUND	I cannot see any reason to shift the playground	Julia Young	The playground has been expanded to accommodated wider age group usage. The upgrade provides the opportunity to relocate the playground slightly east, giving more green open space at the end of the Morpeth St vista. It also helps spread the range of activities along the riverfront.
	Signage to mention it is a memorial park and has been renamed to Colvin Payne Park	Julia Young	Noted - to be included as part of the interpretation at the detail design phase.
PARKING	One or two disabled parking spots by the hall	Helen Briscoe	Noted and included.
TOILETS	Further conversion of the external hall toilet to be disabled-friendly would be advantageous	Helen Briscoe	Noted and to be pursued at the detail design phase.
	Consideration given to linking the septic system servicing the Hall to the modern system in the public facilities	Helen Briscoe	

THEME	COMMENT	CONTACT	RESPONSE
CULTURAL CENTRE	We really really need a cultural centre and we wonder if we could get a grant to buy the RMS building behind the church in Harwood.	Julia Young	For Council consideration.
OVAL	Very disappointed to not see an oval/ field space allocated for children to run and kick a ball. The school is not open to the public any more and the cricket oval is not an option.	Kristy Evans	Open grass spaces are allocated on the waterfront for small children as a kick-about space and informal play. For formal sports, discussions to be had with the school and managers of the Cricket Oval.
UNDERBRIDGE	In addition to the bike track, the kids would love to have a skate park, similar to that in Yamba. The latter is well used and a skate park in Harwood would draw many clients to the area	Helen Briscoe	Noted. The underbridge area north of the car park could include skate elements and a basketball half court to cater for different groups. To be considered at detail design phase. New annotation to be added to concept plan for Harwood Village.
	There were talks of possible half court basketball under the new bridge	Kirsty Evans	
	Possibility of lights attached to the bridge	Kirsty Evans	Lighting noted and addressed in the Opinion of Probable Costs. New annotation to be added to concept plan for Riverwalk East.
MARINE HERITAGE	Would like to see more input regarding the Beardmore tug - could be a tourist attraction	Julia Young	The Beardmore's condition means it's unsuitable to be stored outdoors. To be considered by Council.
	Beardmore is a very important part of both the sugar mill and transport history and the Yaegl method of transporting people and produce to and from Ulgundahi island and of course the history in that and the islands twentieth century history. Unsure from the current plans what has occurred in respect of the incorporation of the above	Stan Cousins	



STAGING



INDICATIVE COSTING

