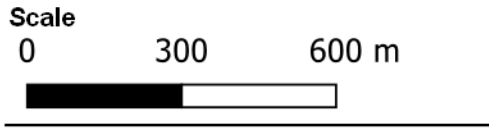



JBP
 scientists and engineers


jbpacific.com.au
 1300 764 332
 477 Boundary Street
 Spring Hill
 QLD 4004





Date
12/09/2023


Legend

Erosion and recession hazard zones (without protection)

50% exceedance probability 

10% exceedance probability 

2% exceedance probability 

1% exceedance probability 

Bedrock 

PROJECT ID	2021s1471
AUTHOR	JK
LAST MODIFIED	12/09/2023
VERSION	12

JBPACIFIC does not warrant the accuracy or completeness of the information displayed in this map. Any person using it does so at their own risk. JBPACIFIC shall bear no responsibility or liability for any errors, faults, defects, or omissions in the information.

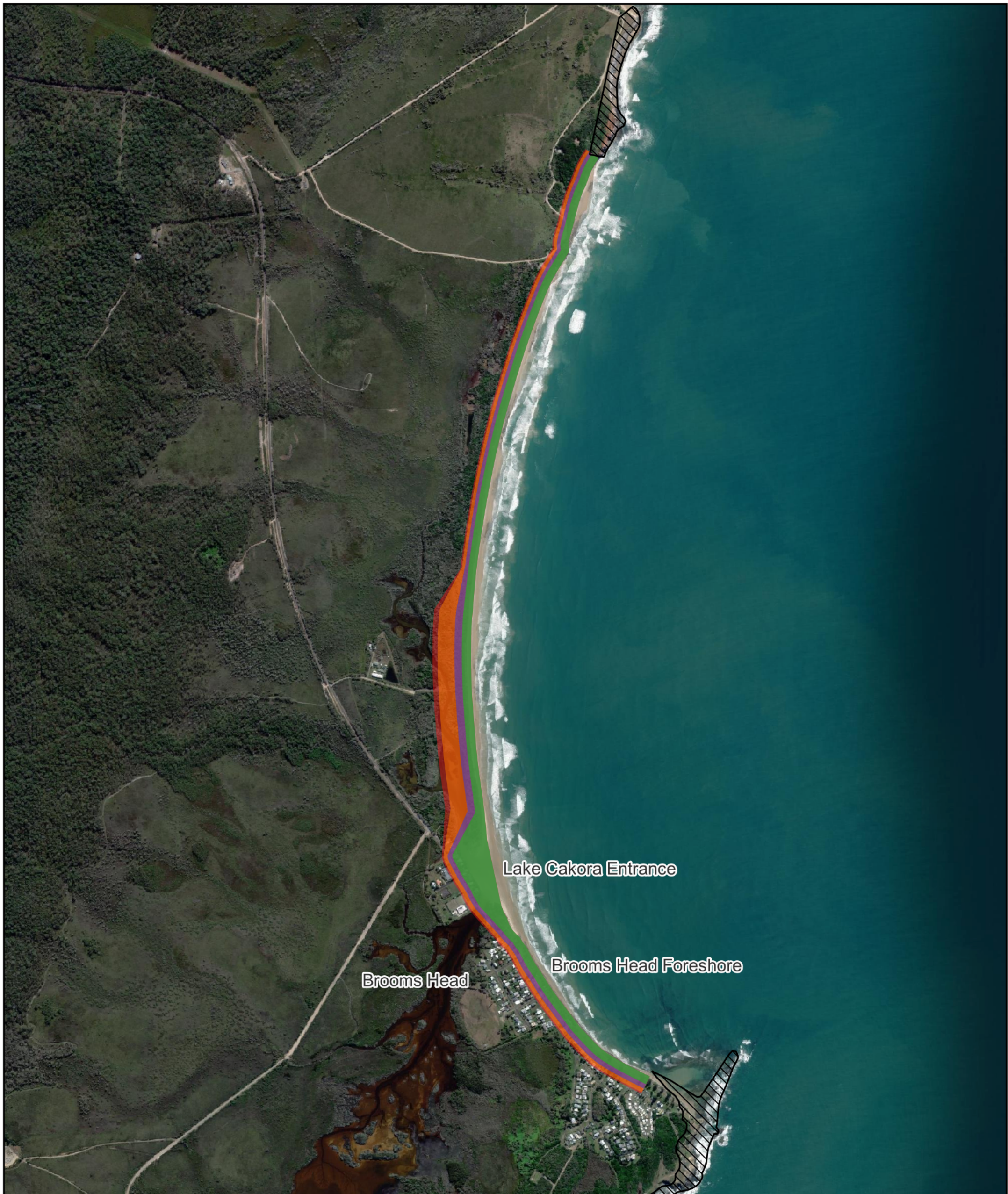
Filename: N:\2021\Projects\2021s1471 - Hydrosphere - CVC CMP Stage 2-4\1_WIP\HM\Graphical\GIS\Projects\Map08_EPA_mapping_EM.gxz

Title
Erosion and recession hazard zones - Present Day: Brooms Head

Project
2021s1471 - Hydrosphere - CVC CMP Stage 2 - 4

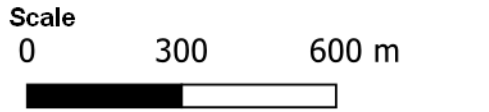
Client
Hydrosphere Consulting

Data Sources:
 Imagery © ESRI Satellite
 Imagery © Nearmap
 Bedrock layer - NSW Geology




JBP
 scientists and engineers

jbpacific.com.au
 1300 764 332
 477 Boundary Street
 Spring Hill
 QLD 4004



Date
12/09/2023

Legend

- Erosion and recession hazard zones (without protection)
- 50% exceedance probability ■
- 10% exceedance probability ■
- 2% exceedance probability ■
- 1% exceedance probability ■
- Bedrock

SSP - Shared Socioeconomic Pathway

PROJECT ID	2021s1471
AUTHOR	JK
LAST MODIFIED	12/09/2023
VERSION	12

JBPACIFIC does not warrant the accuracy or completeness of the information displayed in this map. Any person using it does so at their own risk. JBPACIFIC shall bear no responsibility or liability for any errors, faults, defects, or omissions in the information.

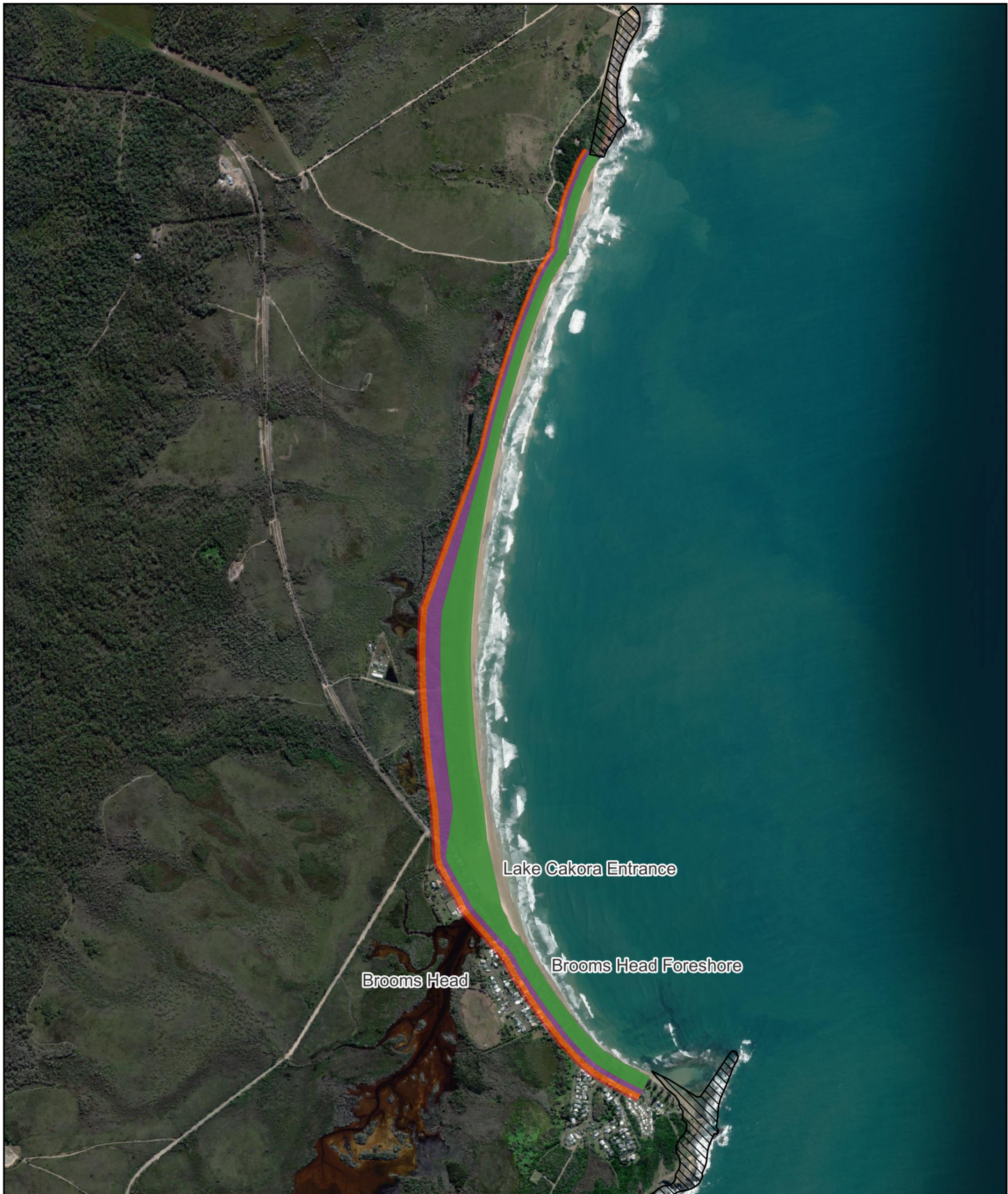
Filename: N:\2021\Projects\2021s1471 - Hydrosphere - CVC CMP Stage 2-4\1_WIP\HM\Graphical\GIS\Projects\Map08_EPA_mapping_EM.gxz

Title
Erosion and recession hazard zones -SSP2 2043: Brooms Head

Project
2021s1471 - Hydrosphere - CVC CMP Stage 2 - 4

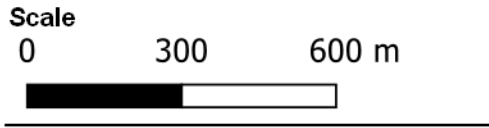
Client
Hydrosphere Consulting

Data Sources:
Imagery © ESRI Satellite
Imagery © Nearmap
Bedrock layer - NSW Geology




JBP
 scientists and engineers


jbpacific.com.au
 1300 764 332
 477 Boundary Street
 Spring Hill
 QLD 4004





Date
 12/09/2023


Legend

Erosion and recession hazard zones (without protection)

50% exceedance probability 

10% exceedance probability 

2% exceedance probability 

1% exceedance probability 

Bedrock 

SSP - Shared Socioeconomic Pathway

PROJECT ID	2021s1471
AUTHOR	JK
LAST MODIFIED	12/09/2023
VERSION	12

JBPACIFIC does not warrant the accuracy or completeness of the information displayed in this map. Any person using it does so at their own risk. JBPACIFIC shall bear no responsibility or liability for any errors, faults, defects, or omissions in the information.

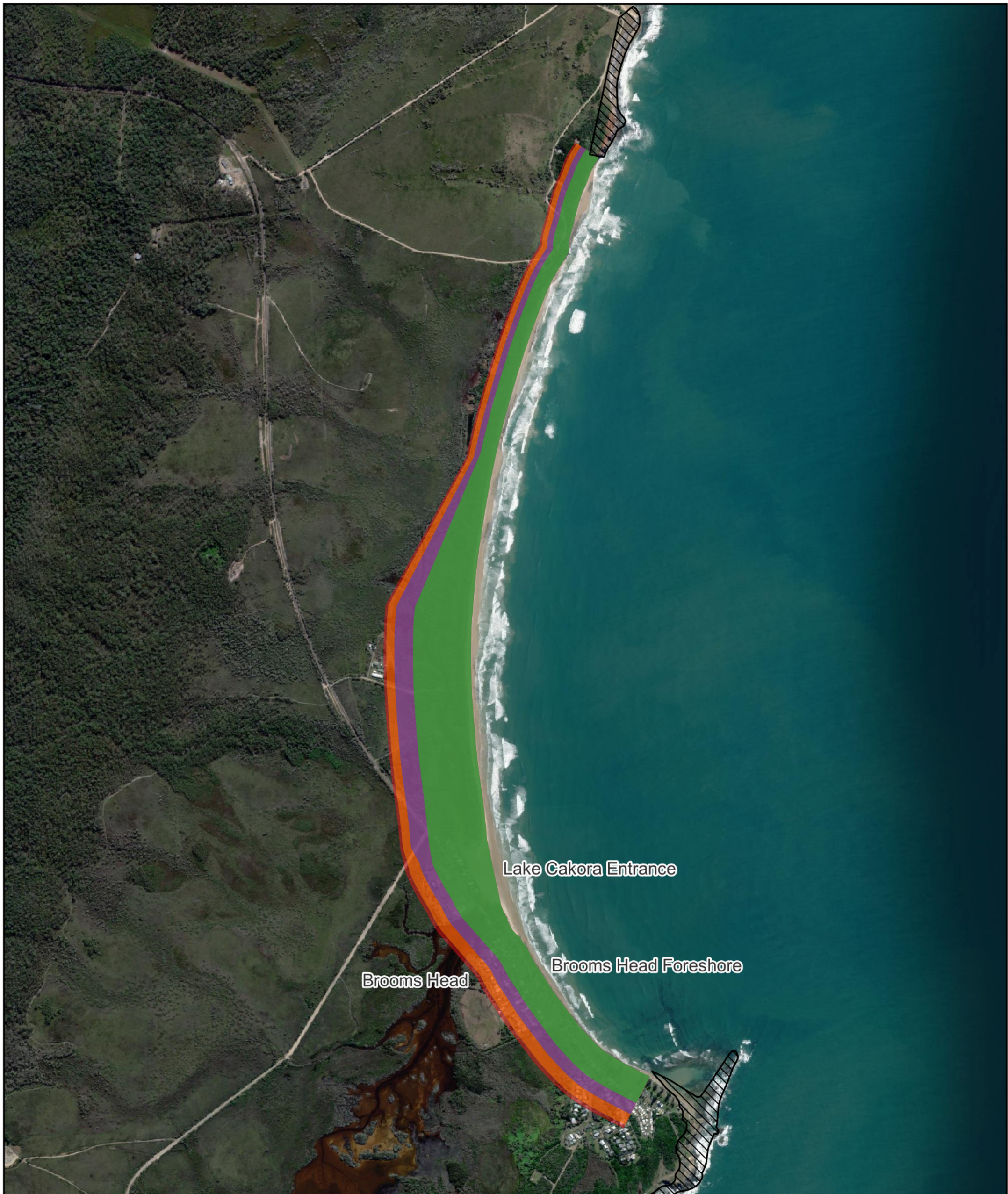
Filename: N:\2021\Projects\2021s1471 - Hydrosphere - CVC CMP Stage 2-4\1_WIP\HM\Graphical\GIS\Projects\Map08_EPA_mapping_EM.gxz

Title
 Erosion and recession hazard zones -SSP2 2073: Brooms Head

Project
 2021s1471 - Hydrosphere - CVC CMP Stage 2 - 4

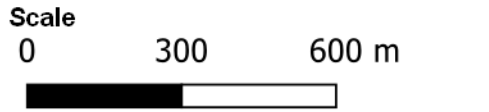
Client
 Hydrosphere Consulting

Data Sources:
 Imagery © ESRI Satellite
 Imagery © Nearmap
 Bedrock layer - NSW Geology




JBP
 scientists and engineers

jbpacific.com.au
 1300 764 332
 477 Boundary Street
 Spring Hill
 QLD 4004



Date
12/09/2023

Legend

- Erosion and recession hazard zones (without protection)
- 50% exceedance probability ■
- 10% exceedance probability ■
- 2% exceedance probability ■
- 1% exceedance probability ■
- Bedrock

SSP - Shared Socioeconomic Pathway

PROJECT ID	2021s1471
AUTHOR	JK
LAST MODIFIED	12/09/2023
VERSION	12

JBPACIFIC does not warrant the accuracy or completeness of the information displayed in this map. Any person using it does so at their own risk. JBPACIFIC shall bear no responsibility or liability for any errors, faults, defects, or omissions in the information.

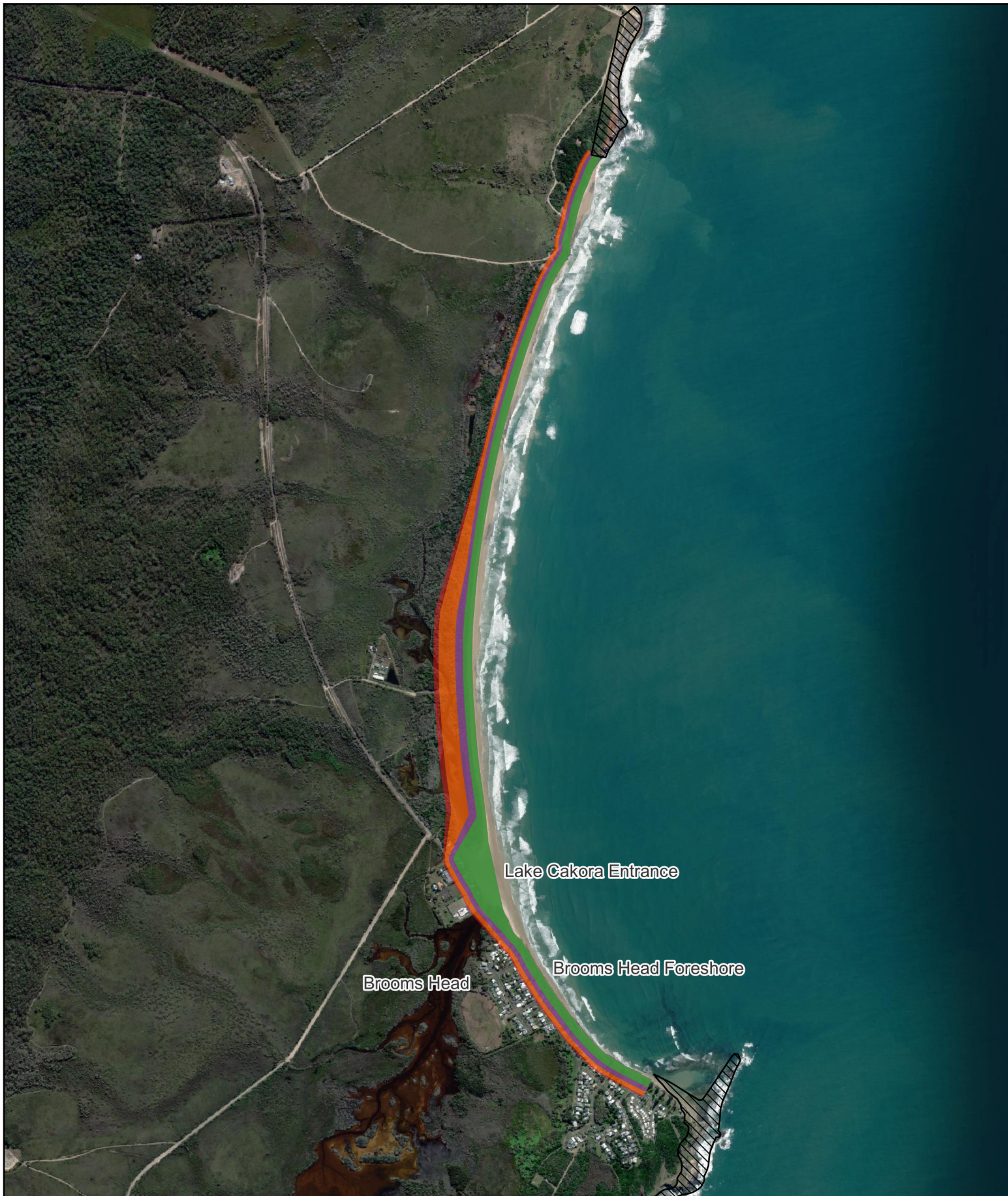
Filename: N:\2021\Projects\2021s1471 - Hydrosphere - CVC CMP Stage 2-4\1_WIP\HM\Graphical\GIS\Projects\Map08_EPA_mapping_EM.gxz

Title
Erosion and recession hazard zones -SSP2 2123: Brooms Head

Project
2021s1471 - Hydrosphere - CVC CMP Stage 2 - 4

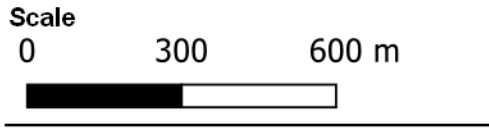
Client
Hydrosphere Consulting

Data Sources:
Imagery © ESRI Satellite
Imagery © Nearmap
Bedrock layer - NSW Geology




JBP
 scientists and engineers


jbpacific.com.au
 1300 764 332
 477 Boundary Street
 Spring Hill
 QLD 4004





Date
12/09/2023


Legend

Erosion and recession hazard zones (without protection)

50% exceedance probability 

10% exceedance probability 

2% exceedance probability 

1% exceedance probability 

Bedrock 

SSP - Shared Socioeconomic Pathway

PROJECT ID	2021s1471
AUTHOR	JK
LAST MODIFIED	12/09/2023
VERSION	12

JBPACIFIC does not warrant the accuracy or completeness of the information displayed in this map. Any person using it does so at their own risk. JBPACIFIC shall bear no responsibility or liability for any errors, faults, defects, or omissions in the information.

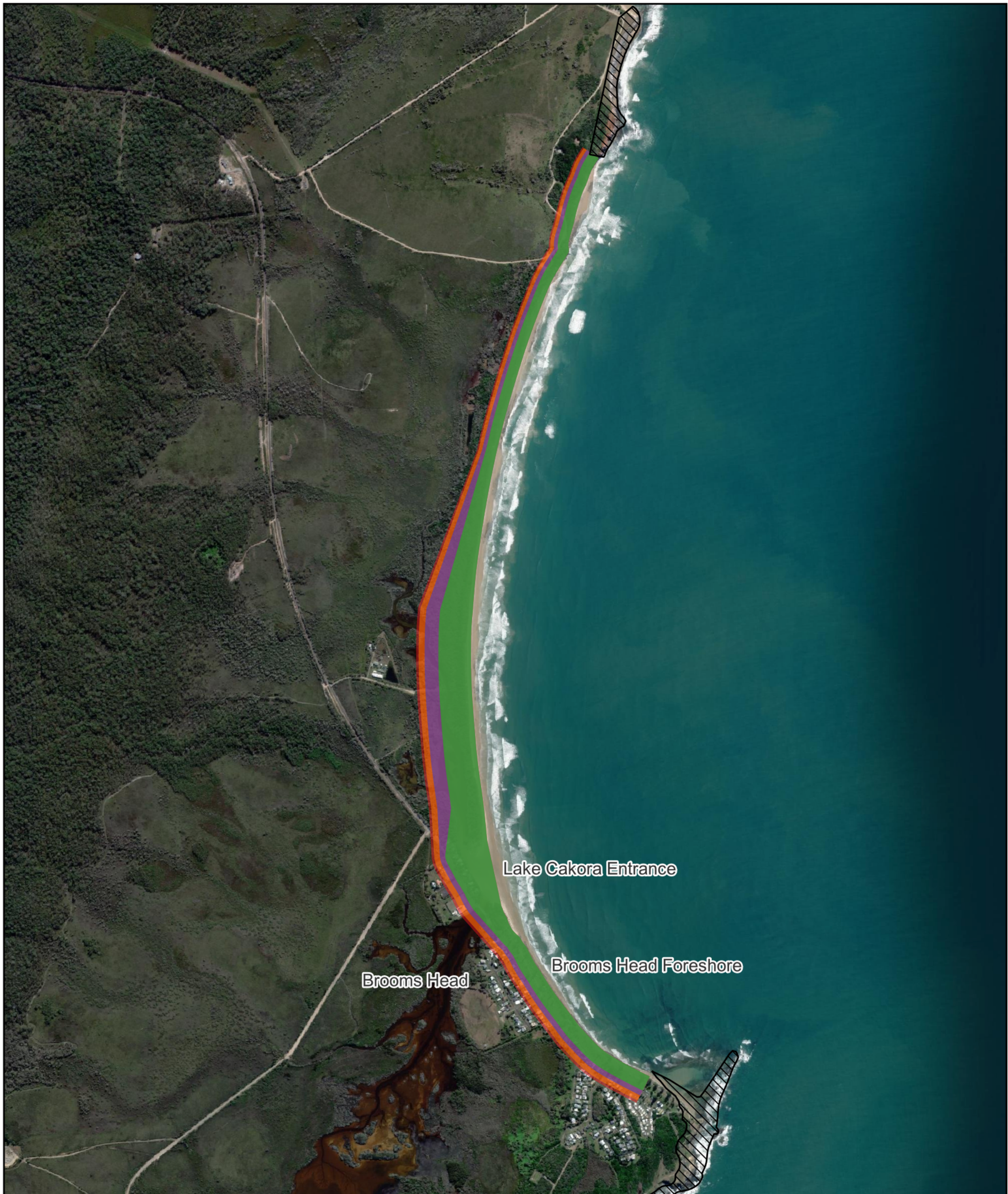
Filename: N:\2021\Projects\2021s1471 - Hydrosphere - CVC CMP Stage 2-4\1_WIP\HM\Graphical\GIS\Projects\Map08_EPA_mapping_EM.gxz

Title
Erosion and recession hazard zones -SSP5 2043: Brooms Head

Project
2021s1471 - Hydrosphere - CVC CMP Stage 2 - 4

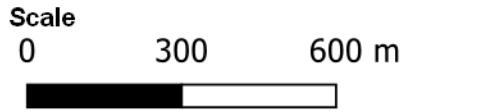
Client
Hydrosphere Consulting

Data Sources:
Imagery © ESRI Satellite
Imagery © Nearmap
Bedrock layer - NSW Geology





JBP
 scientists and engineers

jbpacific.com.au
 1300 764 332
 477 Boundary Street
 Spring Hill
 QLD 4004



Date
 12/09/2023

Legend

- Erosion and recession hazard zones (without protection)
- 50% exceedance probability ■
- 10% exceedance probability ■
- 2% exceedance probability ■
- 1% exceedance probability ■
- Bedrock 

SSP - Shared Socioeconomic Pathway

PROJECT ID	2021s1471
AUTHOR	JK
LAST MODIFIED	12/09/2023
VERSION	12

JBPACIFIC does not warrant the accuracy or completeness of the information displayed in this map. Any person using it does so at their own risk. JBPACIFIC shall bear no responsibility or liability for any errors, faults, defects, or omissions in the information.

Filename: N:\2021\Projects\2021s1471 - Hydrosphere - CVC CMP Stage 2-4\1_WIP\HM\Graphical\GIS\Projects\Map08_EPA_mapping_EM.gxz

Title
 Erosion and recession hazard zones -SSP5 2073: Brooms Head

Project
 2021s1471 - Hydrosphere - CVC CMP Stage 2 - 4

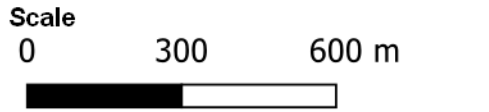
Client
 Hydrosphere Consulting

Data Sources:
 Imagery © ESRI Satellite
 Imagery © Nearmap
 Bedrock layer - NSW Geology




JBP
 scientists and engineers

jbpacific.com.au
 1300 764 332
 477 Boundary Street
 Spring Hill
 QLD 4004



Date
 12/09/2023

Legend

- Erosion and recession hazard zones (without protection)
- 50% exceedance probability
 - 10% exceedance probability
 - 2% exceedance probability
 - 1% exceedance probability
 - Bedrock

SSP - Shared Socioeconomic Pathway

PROJECT ID	2021s1471
AUTHOR	JK
LAST MODIFIED	12/09/2023
VERSION	12

JBPACIFIC does not warrant the accuracy or completeness of the information displayed in this map. Any person using it does so at their own risk. JBPACIFIC shall bear no responsibility or liability for any errors, faults, defects, or omissions in the information.

Filename: N:\2021\Projects\2021s1471 - Hydrosphere - CVC CMP Stage 2-4\1_WIP\HM\Graphical\GIS\Projects\Map08_EPA_mapping_EM.gxz

Title
 Erosion and recession hazard zones -SSP5 2123: Brooms Head

Project
 2021s1471 - Hydrosphere - CVC CMP Stage 2 - 4

Client
 Hydrosphere Consulting

Data Sources:
 Imagery © ESRI Satellite
 Imagery © Nearmap
 Bedrock layer - NSW Geology