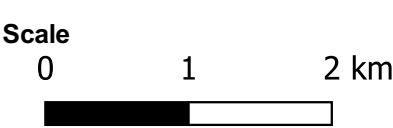









JBP
 scientists and engineers

jbpacific.com.au
 (07) 3085 7469
 477 Boundary Street
 Spring Hill
 QLD 4004



Date
29/08/2022

Legend

-  Mapping Extent
-  Road Centrelines
- Present Day Inundation Extents**
-  HHWSS
-  10% AEP Storm Tide Level
-  2% AEP Storm Tide Level
-  1% AEP Storm Tide Level

HHWSS - High High Water Solstices Springs (highest water level from spring tides)
 AEP - Annual Exceedance Probability
 SSP - Shared Socioeconomic Pathway (climate change scenario)

PROJECT ID	2021s1471
AUTHOR	CS
LAST MODIFIED	29/08/2022
VERSION	1

JBPACIFIC does not warrant the accuracy or completeness of the information displayed in this map. Any person using it does so at their own risk. JBPACIFIC shall bear no responsibility or liability for any errors, faults, defects, or omissions in the information.

Filename: N:\2021\Projects\2021s1471 - Hydrosphere - CVC CMP Stage 2-4\1_WIP\HM\Graphical\GIS\Projects\CLA Model Results_CS.qgz

Title
 Clarence River Inundation Extents - Present Day

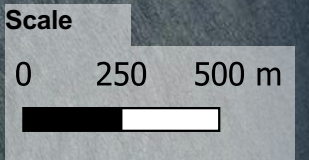
Project
 2021s1471 - Hydrosphere - CVC CMP Stage 2 - 4

Client
 Hydrosphere Consulting

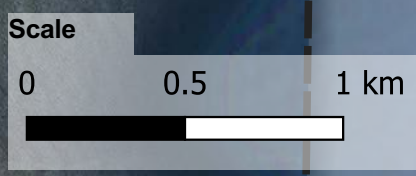
Data Sources:
 Roads © 2019 NSW Government
 DCDB (c) 2017 NSW Government
 Imagery (c) 2021 NSW 7Maps

Outside Mapping Extent

1









2




scientists and engineers
 jbpacific.com.au
 (07) 3085 7469
 477 Boundary Street
 Spring Hill
 QLD 4004

Date
29/08/2022

- Legend**
-  Mapping Extent
 -  Road Centrelines
 - Present Day Inundation Extents**
 -  HHWSS
 -  10% AEP Storm Tide Level
 -  2% AEP Storm Tide Level
 -  1% AEP Storm Tide Level

HHWSS - High High Water Solstices Springs (highest water level from spring tides)
 AEP - Annual Exceedance Probability
 SSP - Shared Socioeconomic Pathway (climate change scenario)

PROJECT ID	2021s1471
AUTHOR	CS
LAST MODIFIED	29/08/2022
VERSION	1

JBPACIFIC does not warrant the accuracy or completeness of the information displayed in this map. Any person using it does so at their own risk. JBPACIFIC shall bear no responsibility or liability for any errors, faults, defects, or omissions in the information.

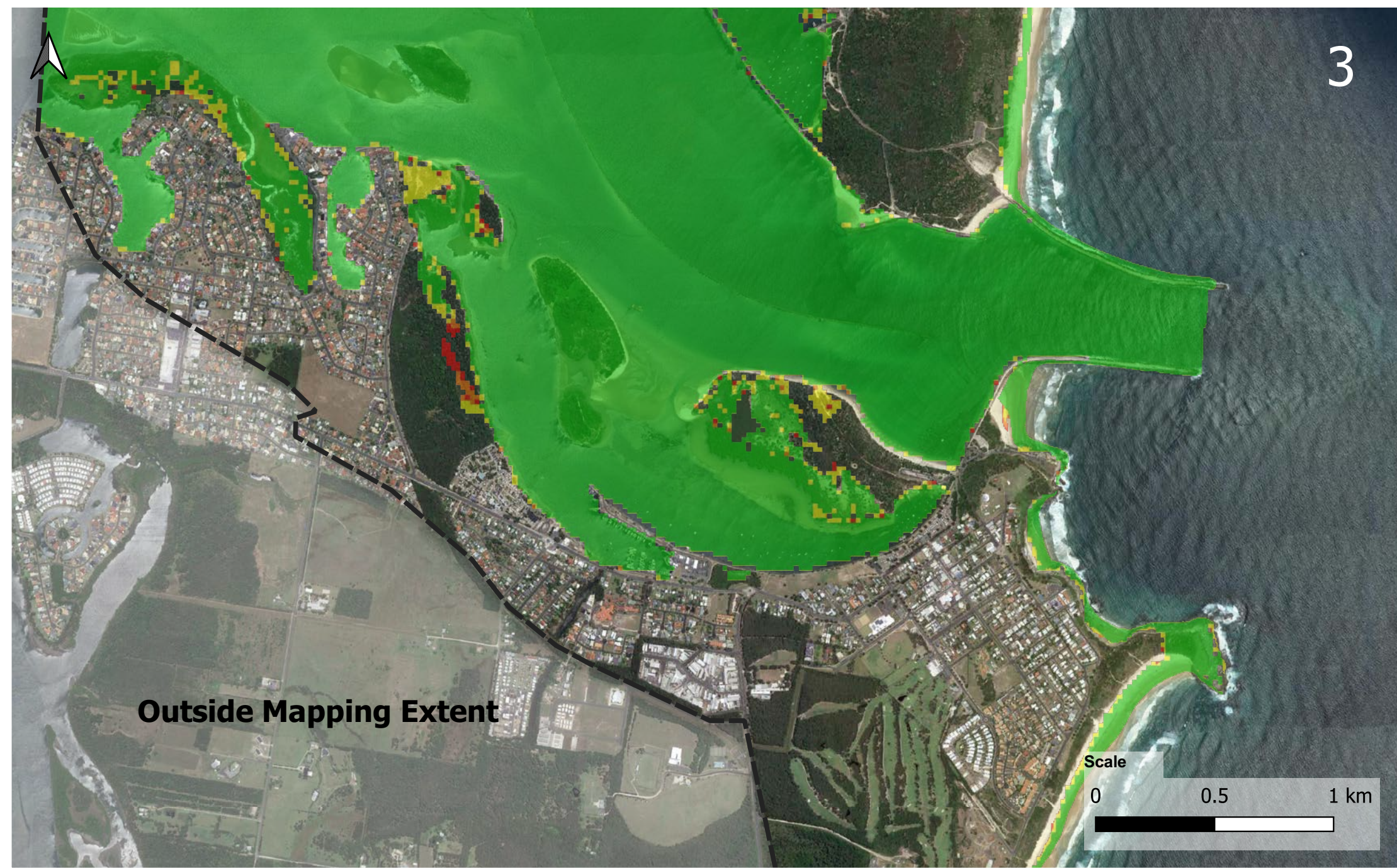
Filename: N:\2021\Projects\2021s1471 - Hydrosphere - CVC CMP Stage 2-4\1_WIP\HM\Graphical\GIS\Projects\CLA Model Results_CS.qgz

Title
 Clarence River Inundation Extents - Present Day

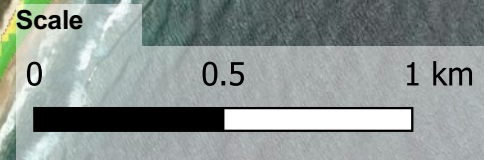
Project
 2021s1471 - Hydrosphere - CVC CMP Stage 2 - 4

Client
 Hydrosphere Consulting

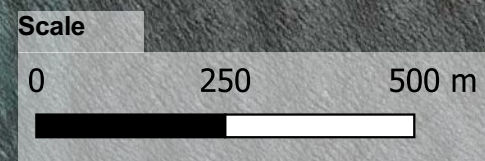
Data Sources:
 Roads © 2019 NSW Government
 DCDB (c) 2017 NSW Government
 Imagery (c) 2021 NSW 7Maps



Outside Mapping Extent



Outside Mapping Extent



jbpacific.com.au
 (07) 3085 7469
 477 Boundary Street
 Spring Hill
 QLD 4004

Date
 29/08/2022

Legend

- Mapping Extent
- Road Centrelines
- Present Day Inundation Extents**
 - HHWSS
 - 10% AEP Storm Tide Level
 - 2% AEP Storm Tide Level
 - 1% AEP Storm Tide Level

HHWSS - High High Water Solstices Springs (highest water level from spring tides)
 AEP - Annual Exceedance Probability
 SSP - Shared Socioeconomic Pathway (climate change scenario)

PROJECT ID	2021s1471
AUTHOR	CS
LAST MODIFIED	29/08/2022
VERSION	1

JBPACIFIC does not warrant the accuracy or completeness of the information displayed in this map. Any person using it does so at their own risk. JBPACIFIC shall bear no responsibility or liability for any errors, faults, defects, or omissions in the information.

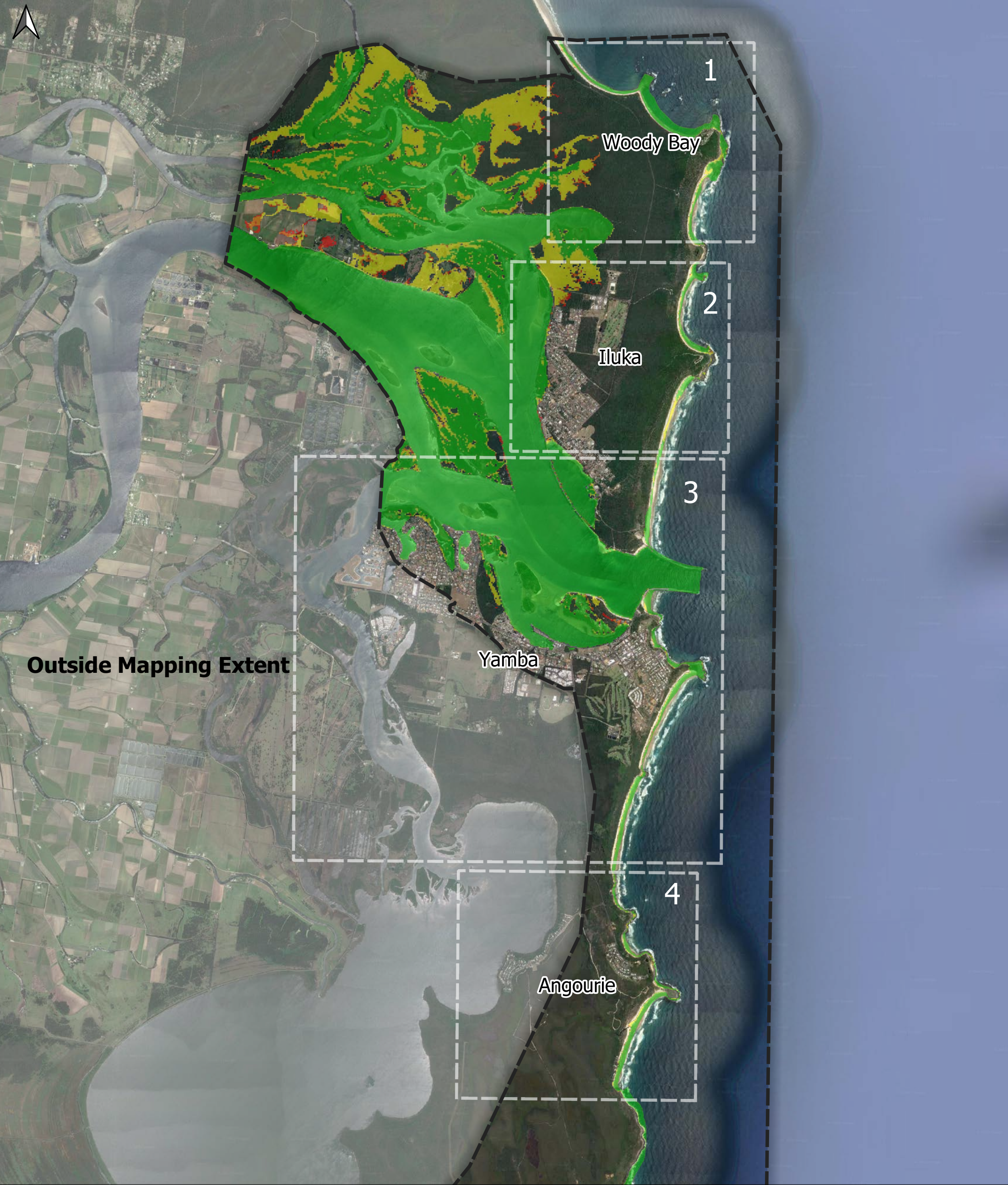
Filename: N:\2021\Projects\2021s1471 - Hydrosphere - CVC CMP Stage 2-4\1_WIP\HM\Graphical\GIS\Projects\CLA Model Results_CS.gqz

Title
 Clarence River Inundation Extents - Present Day

Project
 2021s1471 - Hydrosphere - CVC CMP Stage 2 - 4

Client
 Hydrosphere Consulting

Data Sources:
 Roads © 2019 NSW Government
 DCDB (c) 2017 NSW Government
 Imagery (c) 2021 NSW 7Maps



Outside Mapping Extent

1
Woody Bay

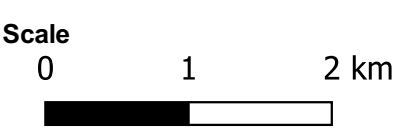
2
Iluka

3
Yamba

4
Angourie

JBP
scientists and engineers

jbpacific.com.au
(07) 3085 7469
477 Boundary Street
Spring Hill
QLD 4004



Date
29/08/2022

Legend

- Mapping Extent
- Road Centrelines
- 2043 SSP2 Inundation Extents**
- HHWSS
- 10% AEP Storm Tide Level
- 2% AEP Storm Tide Level
- 1% AEP Storm Tide Level

HHWSS - High High Water Solstices Springs (highest water level from spring tides)
 AEP - Annual Exceedance Probability
 SSP - Shared Socioeconomic Pathway (climate change scenario)

PROJECT ID	2021s1471
AUTHOR	CS
LAST MODIFIED	29/08/2022
VERSION	1

JBPACIFIC does not warrant the accuracy or completeness of the information displayed in this map. Any person using it does so at their own risk. JBPACIFIC shall bear no responsibility or liability for any errors, faults, defects, or omissions in the information.

Filename: N:\2021\Projects\2021s1471 - Hydrosphere - CVC CMP Stage 2-4\1_WIP\HM\Graphical\GIS\Projects\CLA Model Results_CS.qgz

Title
Clarence River Inundation Extents - 2043 SSP2

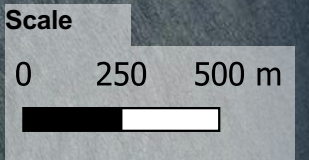
Project
2021s1471 - Hydrosphere - CVC CMP Stage 2 - 4

Client
Hydrosphere Consulting

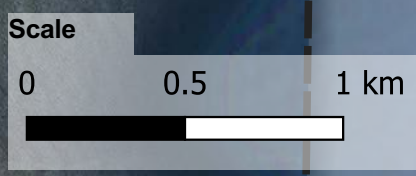
Data Sources:
Roads © 2019 NSW Government
DCDB (c) 2017 NSW Government
Imagery (c) 2021 NSW 7Maps

Outside Mapping Extent

1









2




jbpacific.com.au
(07) 3085 7469
477 Boundary Street
Spring Hill
QLD 4004

Date
29/08/2022

Legend

-  Mapping Extent
-  Road Centrelines
- 2043 SSP2 Inundation Extents**
 -  HHWSS
 -  10% AEP Storm Tide Level
 -  2% AEP Storm Tide Level
 -  1% AEP Storm Tide Level

HHWSS - High High Water Solstices Springs (highest water level from spring tides)
AEP - Annual Exceedance Probability
SSP - Shared Socioeconomic Pathway (climate change scenario)

PROJECT ID	2021s1471
AUTHOR	CS
LAST MODIFIED	29/08/2022
VERSION	1

JBPACIFIC does not warrant the accuracy or completeness of the information displayed in this map. Any person using it does so at their own risk. JBPACIFIC shall bear no responsibility or liability for any errors, faults, defects, or omissions in the information.

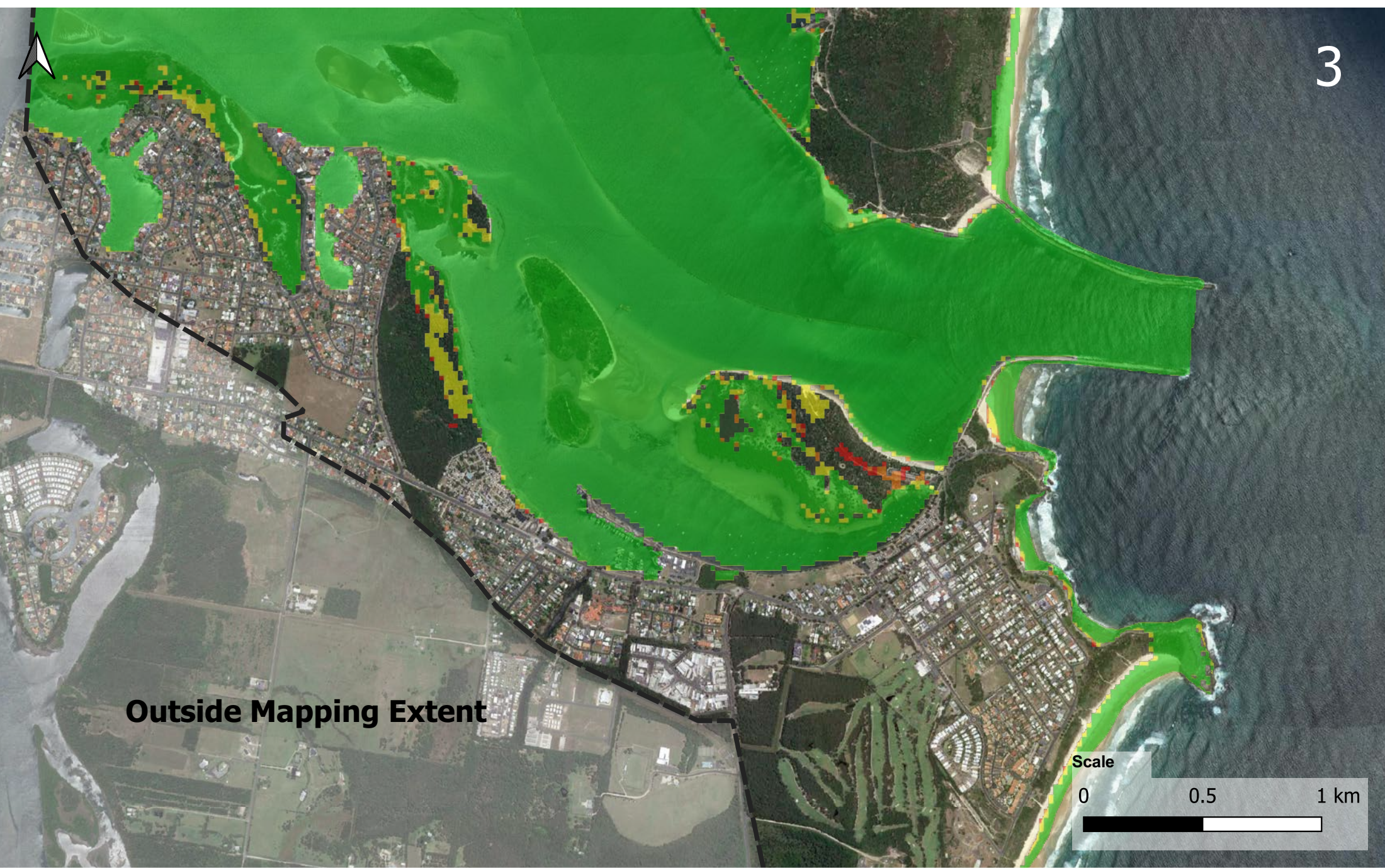
Filename: N:\2021\Projects\2021s1471 - Hydrosphere - CVC CMP Stage 2-4\1_WIP\HM\Graphical\GIS\Projects\CLA Model Results_CS.qgz

Title
Clarence River Inundation Extents - 2043 SSP2

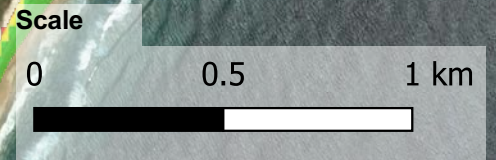
Project
2021s1471 - Hydrosphere - CVC CMP Stage 2 - 4

Client
Hydrosphere Consulting

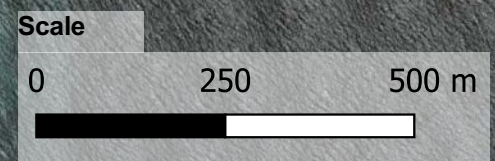
Data Sources:
Roads © 2019 NSW Government
DCDB (c) 2017 NSW Government
Imagery (c) 2021 NSW 7Maps



Outside Mapping Extent



Outside Mapping Extent



jbpacific.com.au
 (07) 3085 7469
 477 Boundary Street
 Spring Hill
 QLD 4004

Date
29/08/2022

- Legend**
- Mapping Extent
 - Road Centrelines
 - 2043 SSP2 Inundation Extents**
 - HHWSS
 - 10% AEP Storm Tide Level
 - 2% AEP Storm Tide Level
 - 1% AEP Storm Tide Level

HHWSS - High High Water Solstices Springs (highest water level from spring tides)
 AEP - Annual Exceedance Probability
 SSP - Shared Socioeconomic Pathway (climate change scenario)

PROJECT ID	2021s1471
AUTHOR	CS
LAST MODIFIED	29/08/2022
VERSION	1

JBPACIFIC does not warrant the accuracy or completeness of the information displayed in this map. Any person using it does so at their own risk. JBPACIFIC shall bear no responsibility or liability for any errors, faults, defects, or omissions in the information.

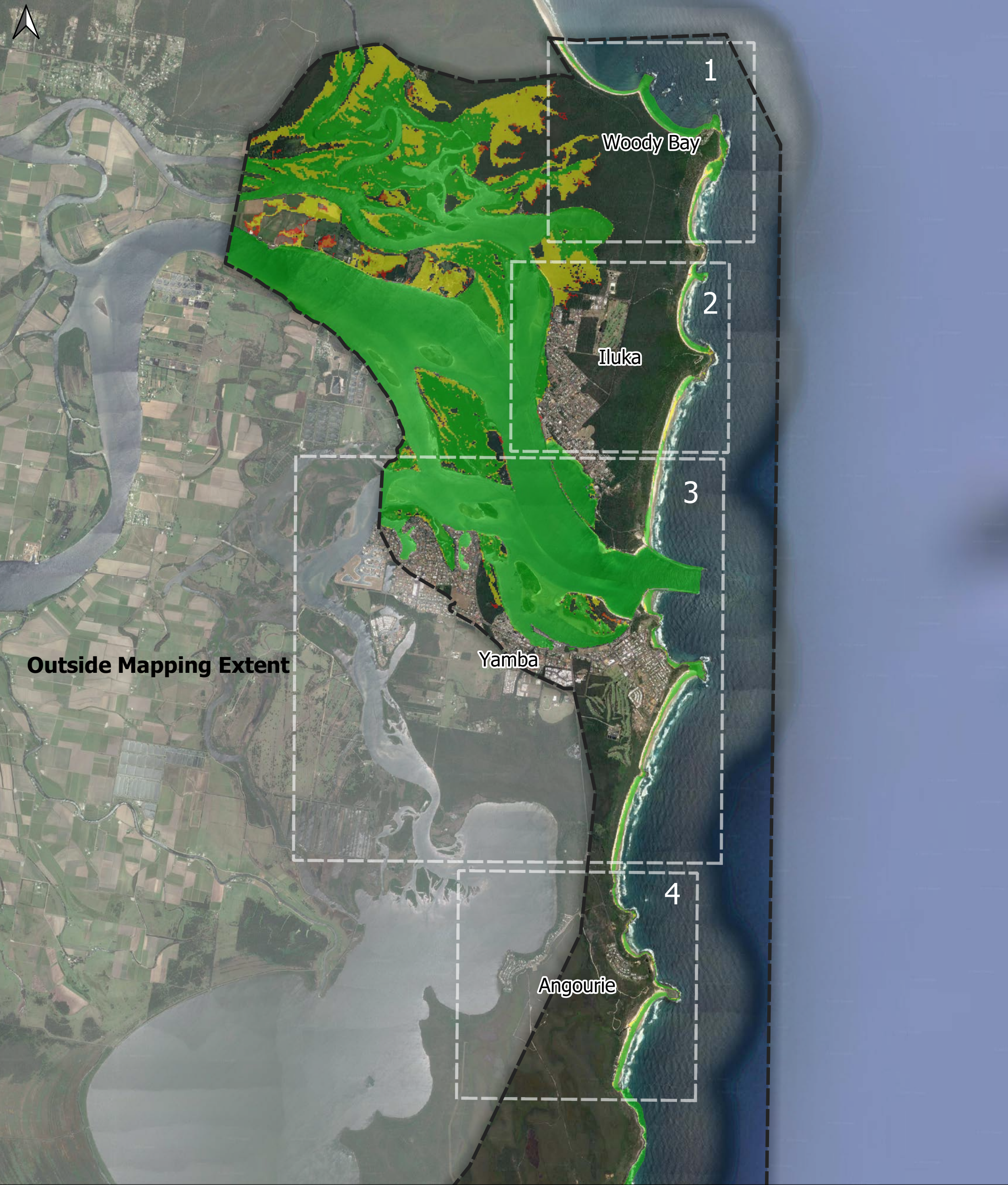
Filename: N:\2021\Projects\2021s1471 - Hydrosphere - CVC CMP Stage 2-4\1_WIP\HM\Graphical\GIS\Projects\CLA Model Results_CS.gqz


Title
 Clarence River Inundation Extents - 2043 SSP2

Project
 2021s1471 - Hydrosphere - CVC CMP Stage 2 - 4

Client
 Hydrosphere Consulting

Data Sources:
 Roads © 2019 NSW Government
 DCDB (c) 2017 NSW Government
 Imagery (c) 2021 NSW 7Maps










scientists and engineers
 jbpacific.com.au
 (07) 3085 7469
 477 Boundary Street
 Spring Hill
 QLD 4004

Scale
 0 1 2 km

Date
 29/08/2022

Legend

-  Mapping Extent
-  Road Centrelines
- 2043 SSP5 Inundation Extents**
-  HHWSS
-  10% AEP Storm Tide Level
-  2% AEP Storm Tide Level
-  1% AEP Storm Tide Level

HHWSS - High High Water Solstices Springs (highest water level from spring tides)
 AEP - Annual Exceedance Probability
 SSP - Shared Socioeconomic Pathway (climate change scenario)

PROJECT ID	2021s1471
AUTHOR	CS
LAST MODIFIED	29/08/2022
VERSION	1

JBPACIFIC does not warrant the accuracy or completeness of the information displayed in this map. Any person using it does so at their own risk. JBPACIFIC shall bear no responsibility or liability for any errors, faults, defects, or omissions in the information.

Filename: N:\2021\Projects\2021s1471 - Hydrosphere - CVC CMP Stage 2-4\1_WIP\HM\Graphical\GIS\Projects\CLA Model Results_CS.qgz

Title
 Clarence River Inundation Extents - 2043 SSP5

Project
 2021s1471 - Hydrosphere - CVC CMP Stage 2 - 4

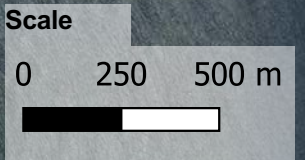
Client
 Hydrosphere Consulting

Data Sources:
 Roads © 2019 NSW Government
 DCDB (c) 2017 NSW Government
 Imagery (c) 2021 NSW 7Maps

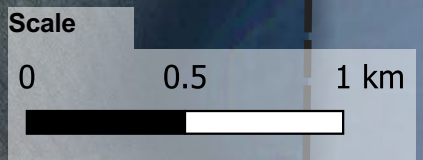


Outside Mapping Extent

1



2



jbpacific.com.au

(07) 3085 7469

477 Boundary Street
Spring Hill
QLD 4004

Legend

Mapping Extent

Road Centrelines

2043 SSP5 Inundation Extents

HHWSS

10% AEP Storm Tide Level

2% AEP Storm Tide Level

1% AEP Storm Tide Level

HHWSS - High High Water Solstices Springs (highest water level from spring tides)

AEP - Annual Exceedance Probability

SSP - Shared Socioeconomic Pathway (climate change scenario)

PROJECT ID	2021s1471
AUTHOR	CS
LAST MODIFIED	29/08/2022
VERSION	1

JBPACIFIC does not warrant the accuracy or completeness of the information displayed in this map. Any person using it does so at their own risk. JBPACIFIC shall bear no responsibility or liability for any errors, faults, defects, or omissions in the information.

Filename: N:\2021\Projects\2021s1471 - Hydrosphere - CVC CMP Stage 2-4\1_WIP\HM\Graphical\GIS\Projects\CLA Model Results_CS.qgz

Title

Clarence River Inundation Extents - 2043 SSP5

Project

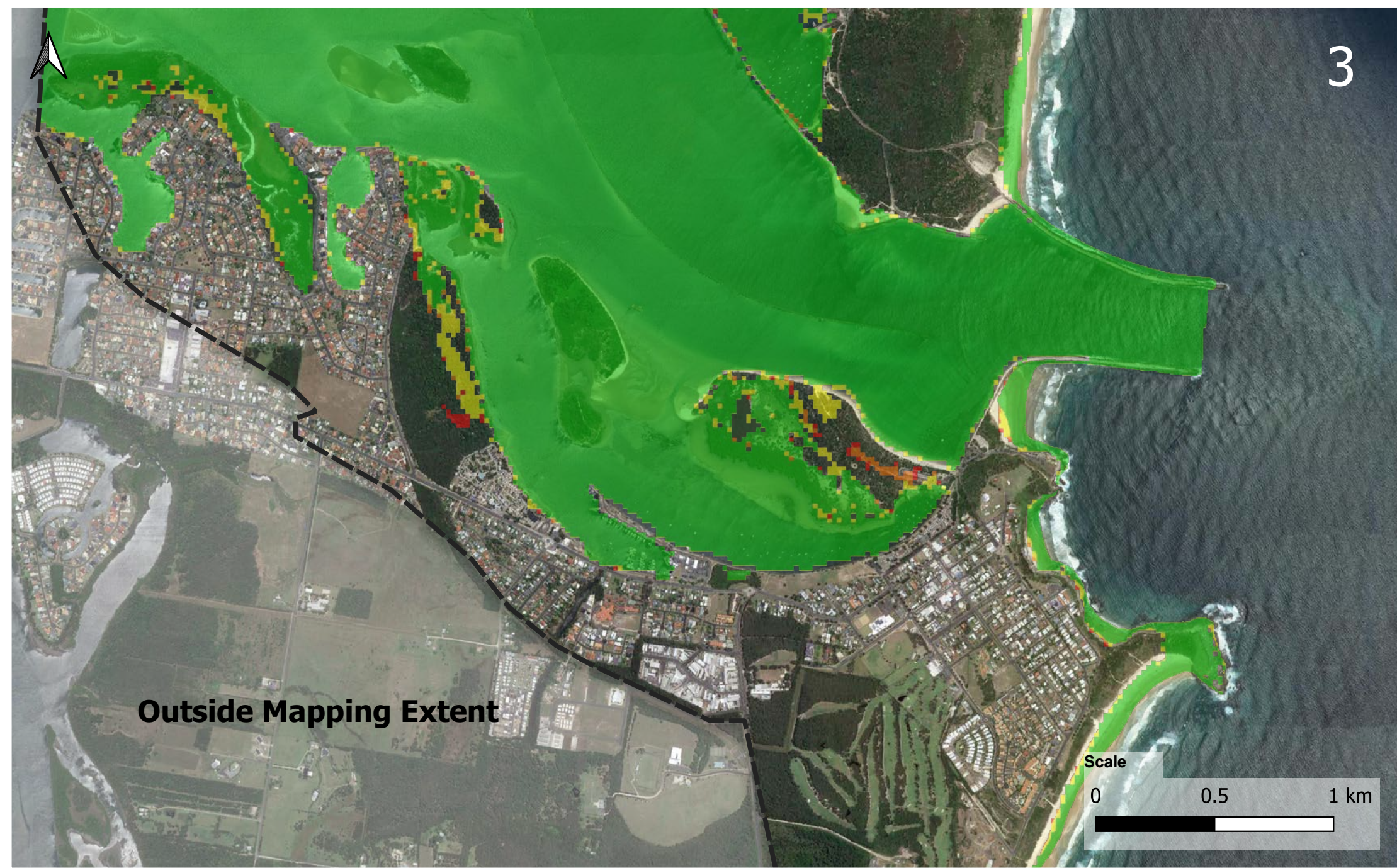
2021s1471 - Hydrosphere - CVC CMP Stage 2 - 4

Client

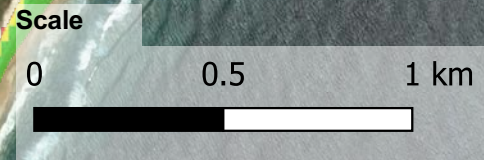
Hydrosphere Consulting

Data Sources:
Roads © 2019 NSW Government
DCDB (c) 2017 NSW Government
Imagery (c) 2021 NSW 7Maps

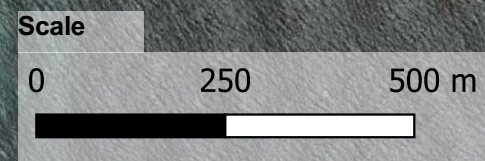
Date
29/08/2022



Outside Mapping Extent



Outside Mapping Extent



jbpacific.com.au
 (07) 3085 7469
 477 Boundary Street
 Spring Hill
 QLD 4004

Date
29/08/2022

- Legend**
- Mapping Extent
 - Road Centrelines
 - 2043 SSP5 Inundation Extents**
 - HHWSS
 - 10% AEP Storm Tide Level
 - 2% AEP Storm Tide Level
 - 1% AEP Storm Tide Level

HHWSS - High High Water Solstices Springs (highest water level from spring tides)
 AEP - Annual Exceedance Probability
 SSP - Shared Socioeconomic Pathway (climate change scenario)

PROJECT ID	2021s1471
AUTHOR	CS
LAST MODIFIED	29/08/2022
VERSION	1

JBPACIFIC does not warrant the accuracy or completeness of the information displayed in this map. Any person using it does so at their own risk. JBPACIFIC shall bear no responsibility or liability for any errors, faults, defects, or omissions in the information.

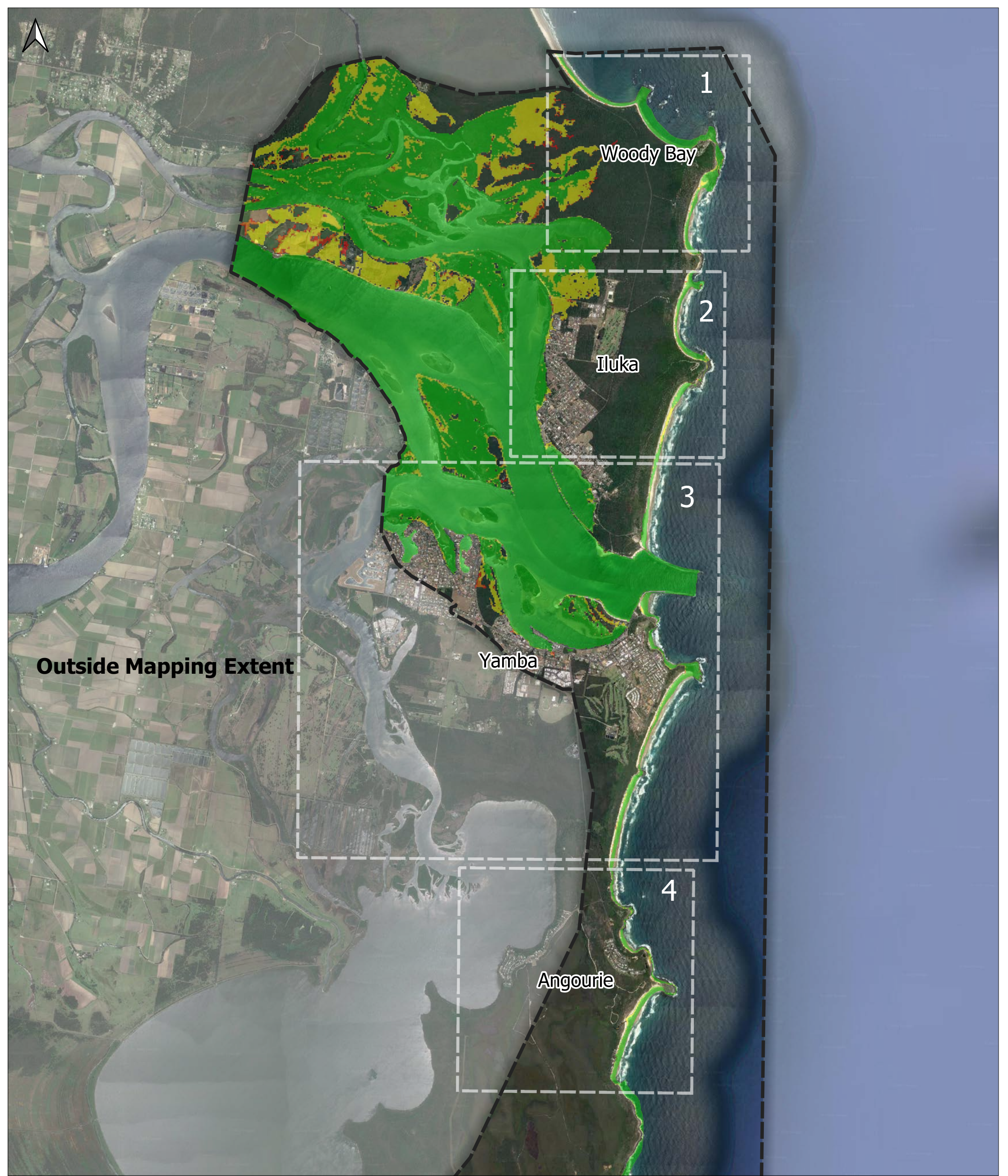
Filename: N:\2021\Projects\2021s1471 - Hydrosphere - CVC CMP Stage 2-4\1_WIP\HM\Graphical\GIS\Projects\CLA Model Results_CS.gqz

Title
 Clarence River Inundation Extents - 2043 SSP5

Project
 2021s1471 - Hydrosphere - CVC CMP Stage 2 - 4

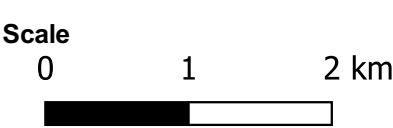
Client
 Hydrosphere Consulting

Data Sources:
 Roads © 2019 NSW Government
 DCDB (c) 2017 NSW Government
 Imagery (c) 2021 NSW 7Maps










JBP
 scientists and engineers

jbpacific.com.au
 (07) 3085 7469
 477 Boundary Street
 Spring Hill
 QLD 4004



Date
29/08/2022

Legend

-  Mapping Extent
-  Road Centrelines
- 2073 SSP2 Inundation Extents**
-  HHWSS
-  10% AEP Storm Tide Level
-  2% AEP Storm Tide Level
-  1% AEP Storm Tide Level

HHWSS - High High Water Solstices Springs (highest water level from spring tides)
 AEP - Annual Exceedance Probability
 SSP - Shared Socioeconomic Pathway (climate change scenario)

PROJECT ID	2021s1471
AUTHOR	CS
LAST MODIFIED	29/08/2022
VERSION	1

JBPACIFIC does not warrant the accuracy or completeness of the information displayed in this map. Any person using it does so at their own risk. JBPACIFIC shall bear no responsibility or liability for any errors, faults, defects, or omissions in the information.

Filename: N:\2021\Projects\2021s1471 - Hydrosphere - CVC CMP Stage 2-4\1_WIP\HM\Graphical\GIS\Projects\CLA Model Results_CS.qgz

Title
 Clarence River Inundation Extents - 2073 SSP2

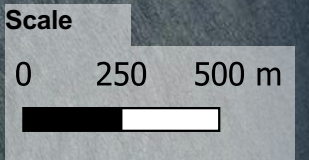
Project
 2021s1471 - Hydrosphere - CVC CMP Stage 2 - 4

Client
 Hydrosphere Consulting

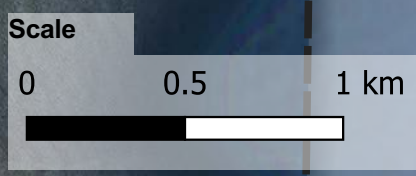
Data Sources:
 Roads © 2019 NSW Government
 DCDB (c) 2017 NSW Government
 Imagery (c) 2021 NSW 7Maps

Outside Mapping Extent

1









2




scientists and engineers
 jbpacific.com.au
 (07) 3085 7469
 477 Boundary Street
 Spring Hill
 QLD 4004

Date
29/08/2022

- Legend**
-  Mapping Extent
 -  Road Centrelines
 - 2073 SSP2 Inundation Extents**
 -  HHWSS
 -  10% AEP Storm Tide Level
 -  2% AEP Storm Tide Level
 -  1% AEP Storm Tide Level

HHWSS - High High Water Solstices Springs (highest water level from spring tides)
 AEP - Annual Exceedance Probability
 SSP - Shared Socioeconomic Pathway (climate change scenario)

PROJECT ID	2021s1471
AUTHOR	CS
LAST MODIFIED	29/08/2022
VERSION	1

JBPACIFIC does not warrant the accuracy or completeness of the information displayed in this map. Any person using it does so at their own risk. JBPACIFIC shall bear no responsibility or liability for any errors, faults, defects, or omissions in the information.

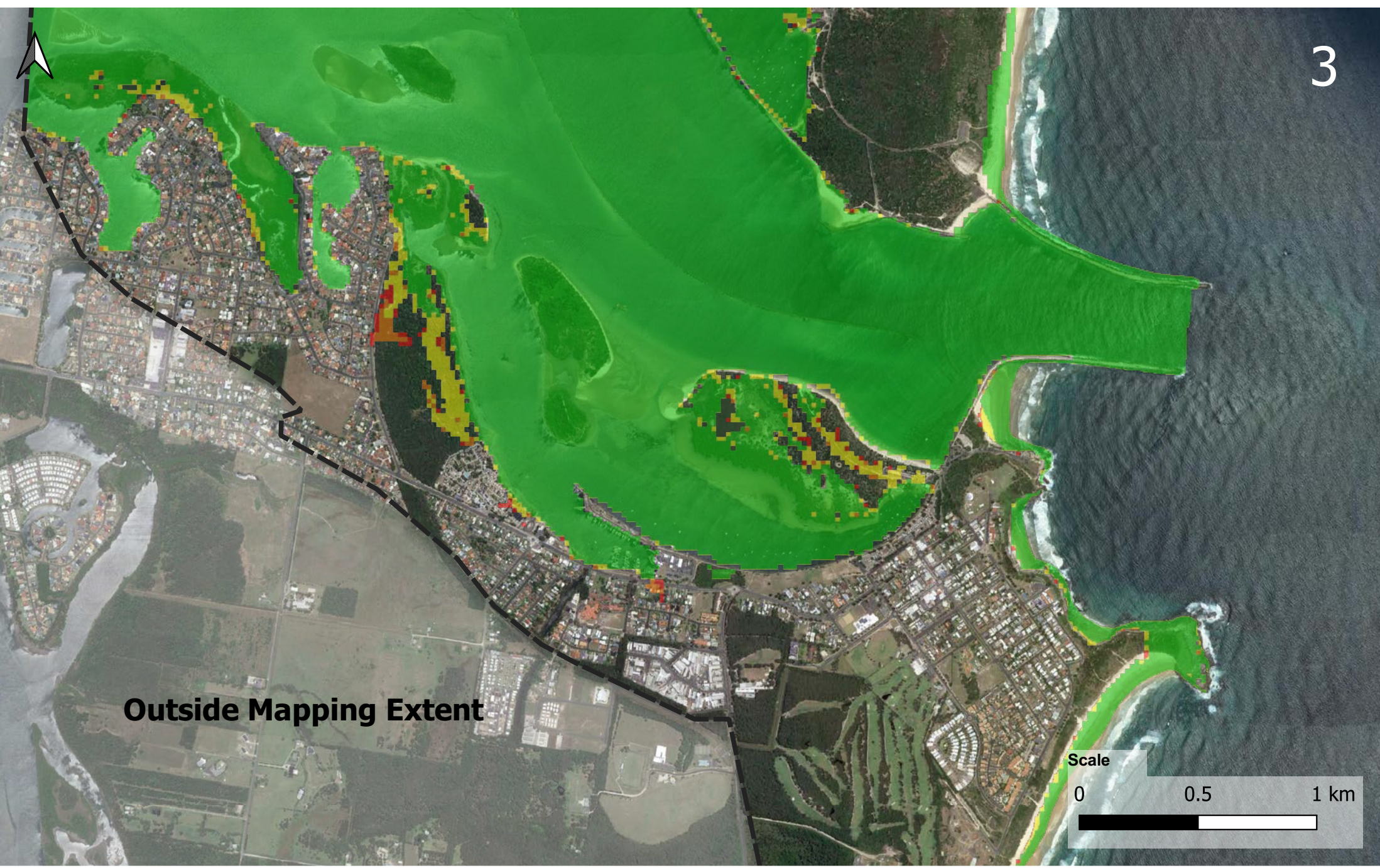
Filename: N:\2021\Projects\2021s1471 - Hydrosphere - CVC CMP Stage 2-4\1_WIP\HM\Graphical\GIS\Projects\CLA Model Results_CS.qgz

Title
Clarence River Inundation Extents - 2073 SSP2

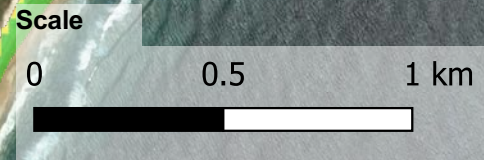
Project
2021s1471 - Hydrosphere - CVC CMP Stage 2 - 4

Client
Hydrosphere Consulting

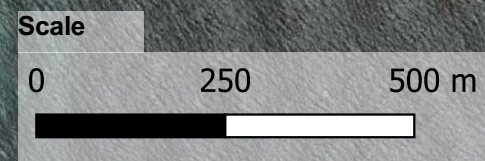
Data Sources:
Roads © 2019 NSW Government
DCDB (c) 2017 NSW Government
Imagery (c) 2021 NSW 7Maps



Outside Mapping Extent



Outside Mapping Extent



jbpacific.com.au
 (07) 3085 7469
 477 Boundary Street
 Spring Hill
 QLD 4004

Date
29/08/2022

- Legend**
- Mapping Extent
 - Road Centrelines
 - 2073 SSP2 Inundation Extents**
 - HHWSS
 - 10% AEP Storm Tide Level
 - 2% AEP Storm Tide Level
 - 1% AEP Storm Tide Level

HHWSS - High High Water Solstices Springs (highest water level from spring tides)
 AEP - Annual Exceedance Probability
 SSP - Shared Socioeconomic Pathway (climate change scenario)

PROJECT ID	2021s1471
AUTHOR	CS
LAST MODIFIED	29/08/2022
VERSION	1

JBPACIFIC does not warrant the accuracy or completeness of the information displayed in this map. Any person using it does so at their own risk. JBPACIFIC shall bear no responsibility or liability for any errors, faults, defects, or omissions in the information.

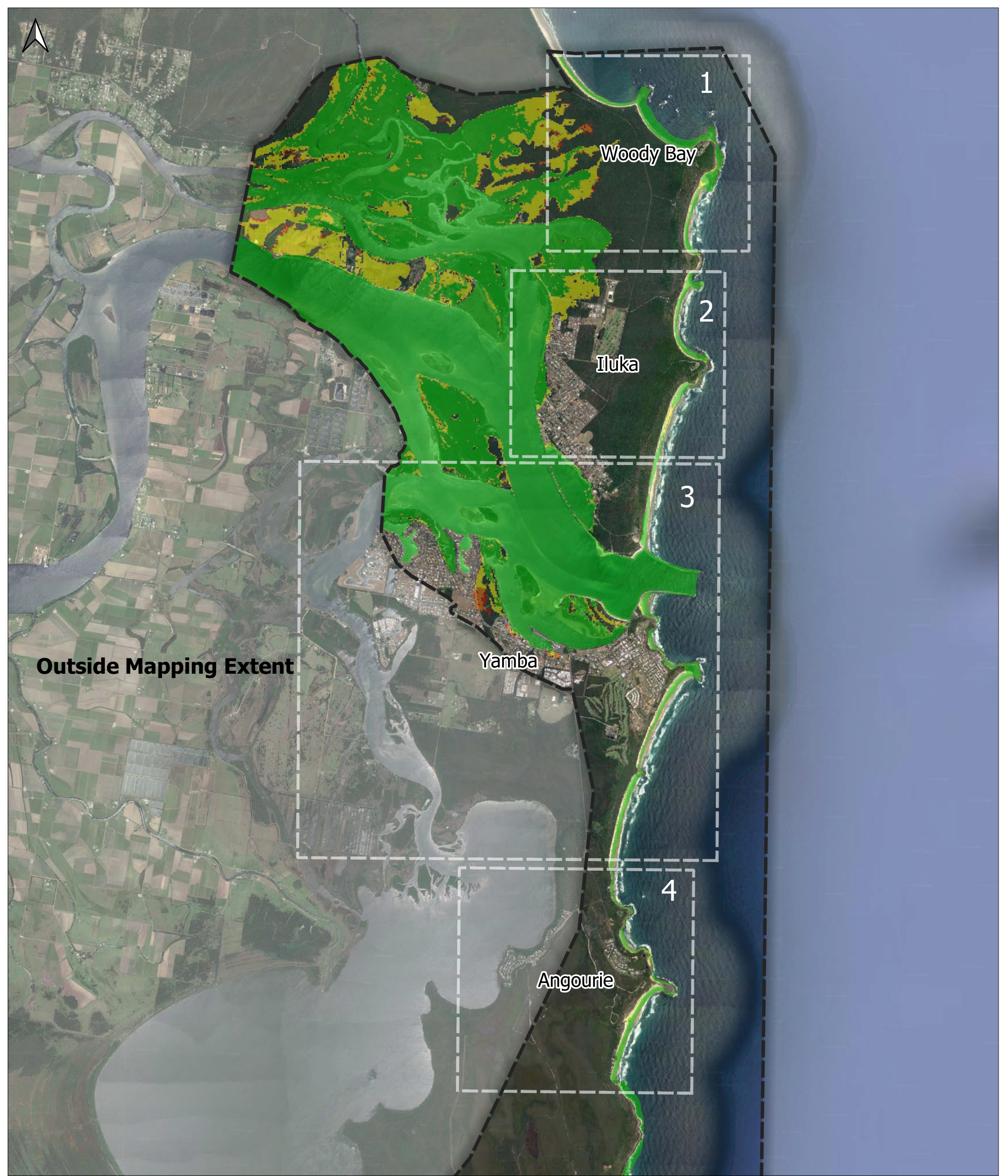
Filename: N:\2021\Projects\2021s1471 - Hydrosphere - CVC CMP Stage 2-4\1_WIP\HM\Graphical\GIS\Projects\CLA Model Results_CS.gqz

Title
 Clarence River Inundation Extents - 2073 SSP2

Project
 2021s1471 - Hydrosphere - CVC CMP Stage 2 - 4

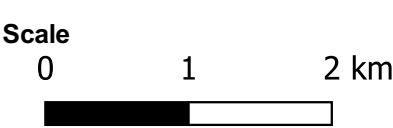
Client
 Hydrosphere Consulting

Data Sources:
 Roads © 2019 NSW Government
 DCDB (c) 2017 NSW Government
 Imagery (c) 2021 NSW 7Maps










JBP
 scientists and engineers

jbpacific.com.au
 (07) 3085 7469
 477 Boundary Street
 Spring Hill
 QLD 4004



Date
29/08/2022

Legend

-  Mapping Extent
-  Road Centrelines
- 2073 SSP5 Inundation Extents**
-  HHWSS
-  10% AEP Storm Tide Level
-  2% AEP Storm Tide Level
-  1% AEP Storm Tide Level

HHWSS - High High Water Solstices Springs (highest water level from spring tides)
 AEP - Annual Exceedance Probability
 SSP - Shared Socioeconomic Pathway (climate change scenario)

PROJECT ID	2021s1471
AUTHOR	CS
LAST MODIFIED	29/08/2022
VERSION	1

JBPACIFIC does not warrant the accuracy or completeness of the information displayed in this map. Any person using it does so at their own risk. JBPACIFIC shall bear no responsibility or liability for any errors, faults, defects, or omissions in the information.

Filename: N:\2021\Projects\2021s1471 - Hydrosphere - CVC CMP Stage 2-4\1_WIP\HM\Graphical\GIS\Projects\CLA Model Results_CS.qgz

Title
 Clarence River Inundation Extents - 2073 SSP5

Project
 2021s1471 - Hydrosphere - CVC CMP Stage 2 - 4

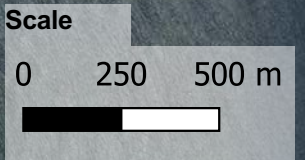
Client
 Hydrosphere Consulting

Data Sources:
 Roads © 2019 NSW Government
 DCDB (c) 2017 NSW Government
 Imagery (c) 2021 NSW 7Maps

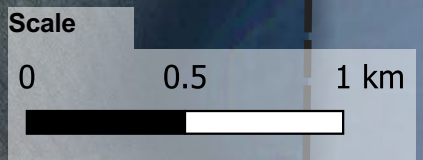


Outside Mapping Extent

1



2



jbpacific.com.au

(07) 3085 7469

477 Boundary Street
Spring Hill
QLD 4004

Legend

Mapping Extent

Road Centrelines

2073 SSP5 Inundation Extents

HHWSS

10% AEP Storm Tide Level

2% AEP Storm Tide Level

1% AEP Storm Tide Level

HHWSS - High High Water Solstices Springs (highest water level from spring tides)

AEP - Annual Exceedance Probability

SSP - Shared Socioeconomic Pathway (climate change scenario)

PROJECT ID	2021s1471
AUTHOR	CS
LAST MODIFIED	29/08/2022
VERSION	1

JBPACIFIC does not warrant the accuracy or completeness of the information displayed in this map. Any person using it does so at their own risk. JBPACIFIC shall bear no responsibility or liability for any errors, faults, defects, or omissions in the information.

Filename: N:\2021\Projects\2021s1471 - Hydrosphere - CVC CMP Stage 2-4\1_WIP\HM\Graphical\GIS\Projects\CLA Model Results_CS.qgz

Title

Clarence River Inundation Extents - 2073 SSP5

Project

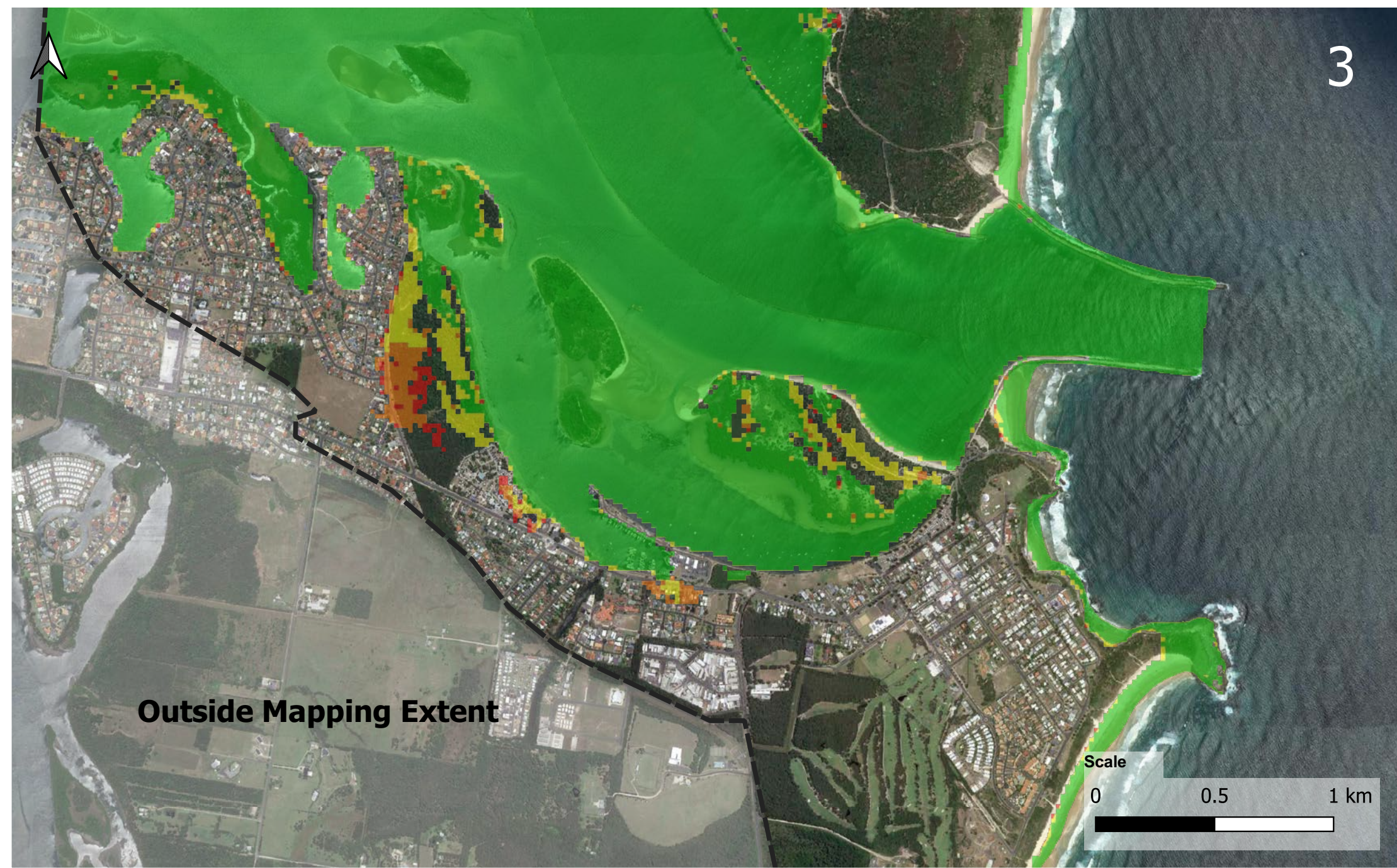
2021s1471 - Hydrosphere - CVC CMP Stage 2 - 4

Client

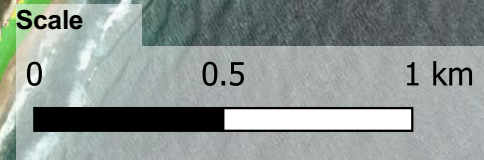
Hydrosphere Consulting

Data Sources:
Roads © 2019 NSW Government
DCDB (c) 2017 NSW Government
Imagery (c) 2021 NSW 7Maps

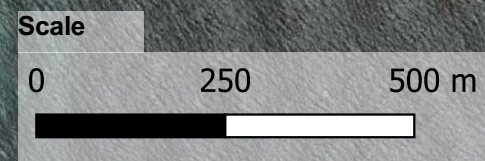
Date
29/08/2022



Outside Mapping Extent









Outside Mapping Extent




scientists and engineers
 jbpacific.com.au
 (07) 3085 7469
 477 Boundary Street
 Spring Hill
 QLD 4004

Date
29/08/2022

Legend

-  Mapping Extent
-  Road Centrelines
- 2073 SSP5 Inundation Extents**
-  HHWSS
-  10% AEP Storm Tide Level
-  2% AEP Storm Tide Level
-  1% AEP Storm Tide Level

HHWSS - High High Water Solstices Springs (highest water level from spring tides)
 AEP - Annual Exceedance Probability
 SSP - Shared Socioeconomic Pathway (climate change scenario)

PROJECT ID	2021s1471
AUTHOR	CS
LAST MODIFIED	29/08/2022
VERSION	1

JBPACIFIC does not warrant the accuracy or completeness of the information displayed in this map. Any person using it does so at their own risk. JBPACIFIC shall bear no responsibility or liability for any errors, faults, defects, or omissions in the information.

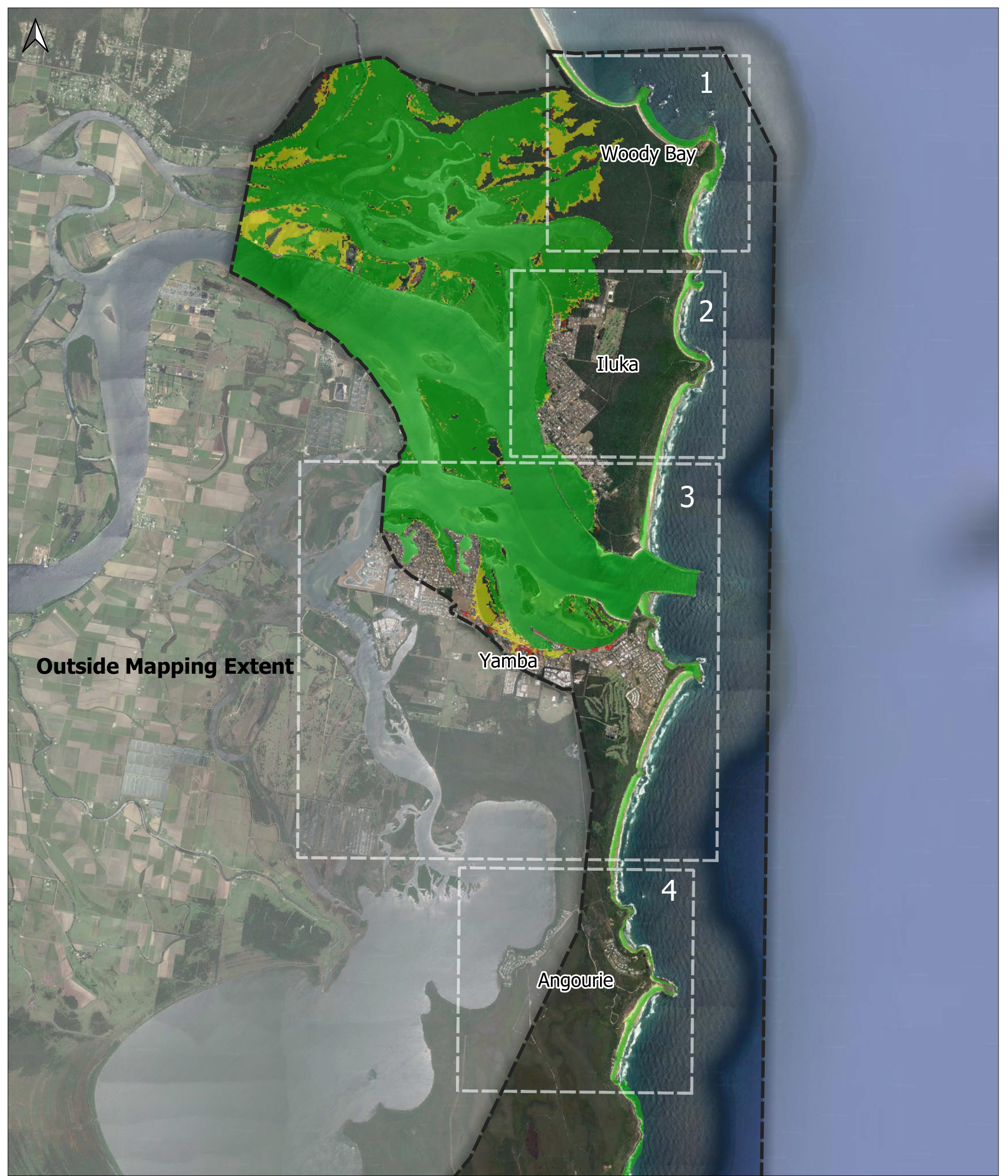
Filename: N:\2021\Projects\2021s1471 - Hydrosphere - CVC CMP Stage 2-4\1_WIP\HM\Graphical\GIS\Projects\CLA Model Results_CS.gqz


Title
Clarence River Inundation Extents - 2073 SSP5

Project
2021s1471 - Hydrosphere - CVC CMP Stage 2 - 4

Client
Hydrosphere Consulting

Data Sources:
 Roads © 2019 NSW Government
 DCDB (c) 2017 NSW Government
 Imagery (c) 2021 NSW 7Maps










scientists and engineers
 jbpacific.com.au
 (07) 3085 7469
 477 Boundary Street
 Spring Hill
 QLD 4004

Scale
 0 1 2 km

Date
 29/08/2022

Legend

-  Mapping Extent
-  Road Centrelines
- 2123 SSP2 Inundation Extents**
-  HHWSS
-  10% AEP Storm Tide Level
-  2% AEP Storm Tide Level
-  1% AEP Storm Tide Level

HHWSS - High High Water Solstices Springs (highest water level from spring tides)
 AEP - Annual Exceedance Probability
 SSP - Shared Socioeconomic Pathway (climate change scenario)

PROJECT ID	2021s1471
AUTHOR	CS
LAST MODIFIED	29/08/2022
VERSION	1

JBPACIFIC does not warrant the accuracy or completeness of the information displayed in this map. Any person using it does so at their own risk. JBPACIFIC shall bear no responsibility or liability for any errors, faults, defects, or omissions in the information.

Filename: N:\2021\Projects\2021s1471 - Hydrosphere - CVC CMP Stage 2-4\1_WIP\HM\Graphical\GIS\Projects\CLA Model Results_CS.qgz

Title
 Clarence River Inundation Extents - 2123 SSP2

Project
 2021s1471 - Hydrosphere - CVC CMP Stage 2 - 4

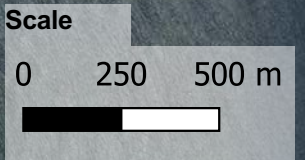
Client
 Hydrosphere Consulting

Data Sources:
 Roads © 2019 NSW Government
 DCDB (c) 2017 NSW Government
 Imagery (c) 2021 NSW 7Maps

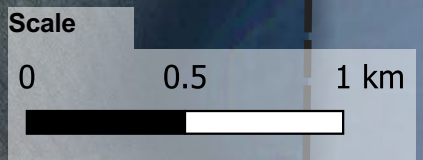


Outside Mapping Extent

1



2



jbpacific.com.au

(07) 3085 7469

477 Boundary Street
Spring Hill
QLD 4004

Legend

Mapping Extent

Road Centrelines

2123 SSP2 Inundation Extents

HHWSS

10% AEP Storm Tide Level

2% AEP Storm Tide Level

1% AEP Storm Tide Level

HHWSS - High High Water Solstices Springs (highest water level from spring tides)

AEP - Annual Exceedance Probability

SSP - Shared Socioeconomic Pathway (climate change scenario)

PROJECT ID	2021s1471
AUTHOR	CS
LAST MODIFIED	29/08/2022
VERSION	1

JBPACIFIC does not warrant the accuracy or completeness of the information displayed in this map. Any person using it does so at their own risk. JBPACIFIC shall bear no responsibility or liability for any errors, faults, defects, or omissions in the information.

Filename: N:\2021\Projects\2021s1471 - Hydrosphere - CVC CMP Stage 2-4\1_WIP\HM\Graphical\GIS\Projects\CLA Model Results_CS.qgz

Title

Clarence River Inundation Extents - 2123 SSP2

Project

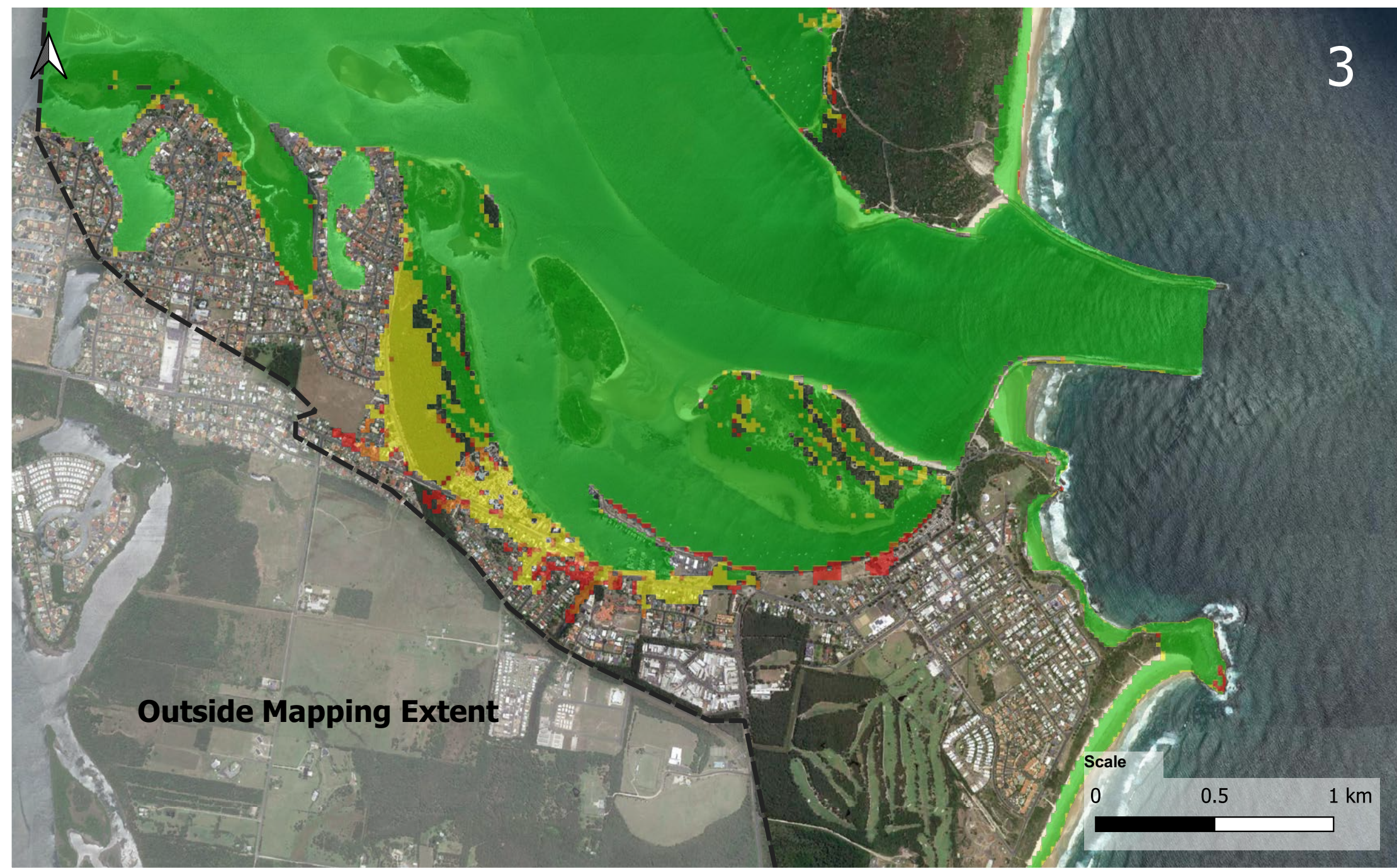
2021s1471 - Hydrosphere - CVC CMP Stage 2 - 4

Client

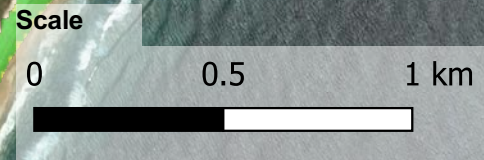
Hydrosphere Consulting

Data Sources:
Roads © 2019 NSW Government
DCDB (c) 2017 NSW Government
Imagery (c) 2021 NSW 7Maps

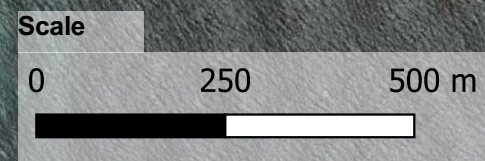
Date
29/08/2022



Outside Mapping Extent



Outside Mapping Extent



jbpacific.com.au
 (07) 3085 7469
 477 Boundary Street
 Spring Hill
 QLD 4004

Date
29/08/2022

- Legend**
- Mapping Extent
 - Road Centrelines
 - 2123 SSP2 Inundation Extents**
 - HHWSS
 - 10% AEP Storm Tide Level
 - 2% AEP Storm Tide Level
 - 1% AEP Storm Tide Level

HHWSS - High High Water Solstices Springs (highest water level from spring tides)
 AEP - Annual Exceedance Probability
 SSP - Shared Socioeconomic Pathway (climate change scenario)

PROJECT ID	2021s1471
AUTHOR	CS
LAST MODIFIED	29/08/2022
VERSION	1

JBPACIFIC does not warrant the accuracy or completeness of the information displayed in this map. Any person using it does so at their own risk. JBPACIFIC shall bear no responsibility or liability for any errors, faults, defects, or omissions in the information.

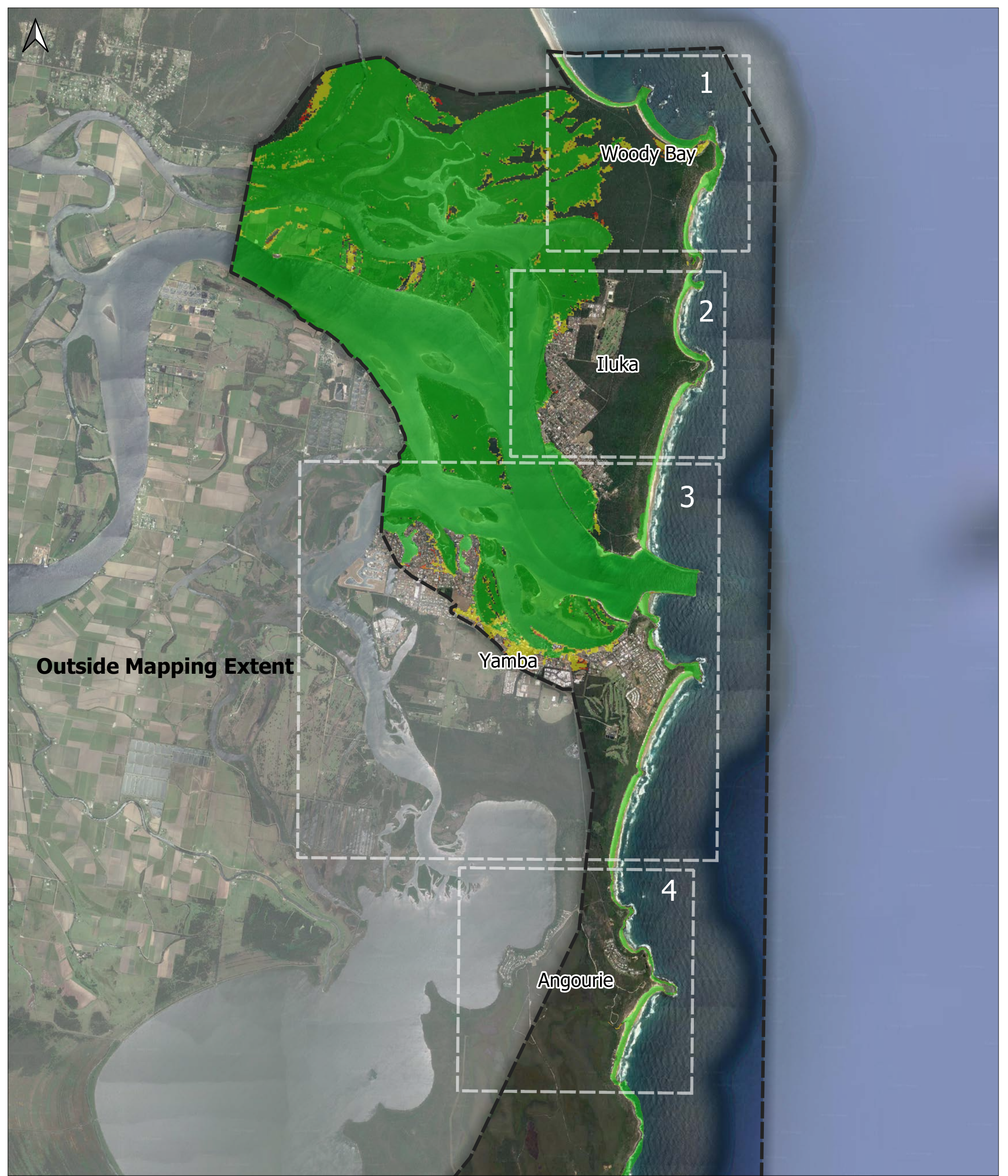
Filename: N:\2021\Projects\2021s1471 - Hydrosphere - CVC CMP Stage 2-4\1_WIP\HM\Graphical\GIS\Projects\CLA Model Results_CS.gqz

Title
 Clarence River Inundation Extents - 2123 SSP2

Project
 2021s1471 - Hydrosphere - CVC CMP Stage 2 - 4

Client
 Hydrosphere Consulting

Data Sources:
 Roads © 2019 NSW Government
 DCDB (c) 2017 NSW Government
 Imagery (c) 2021 NSW 7Maps



Outside Mapping Extent

Woody Bay

Iluka

Yamba

Angourie

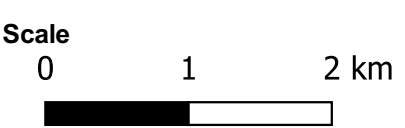
1

2

3







4


scientists and engineers
 jbpacific.com.au
 (07) 3085 7469
 477 Boundary Street
 Spring Hill
 QLD 4004



Date
29/08/2022

Legend

-  Mapping Extent
-  Road Centrelines
- 2123 SSP5 Inundation Extents**
-  HHWSS
-  10% AEP Storm Tide Level
-  2% AEP Storm Tide Level
-  1% AEP Storm Tide Level

HHWSS - High High Water Solstices Springs (highest water level from spring tides)
 AEP - Annual Exceedance Probability
 SSP - Shared Socioeconomic Pathway (climate change scenario)

PROJECT ID	2021s1471
AUTHOR	CS
LAST MODIFIED	29/08/2022
VERSION	1

JBPACIFIC does not warrant the accuracy or completeness of the information displayed in this map. Any person using it does so at their own risk. JBPACIFIC shall bear no responsibility or liability for any errors, faults, defects, or omissions in the information.

Filename: N:\2021\Projects\2021s1471 - Hydrosphere - CVC CMP Stage 2-4\1_WIP\HM\Graphical\GIS\Projects\CLA Model Results_CS.qgz

Title
Clarence River Inundation Extents - 2123 SSP5

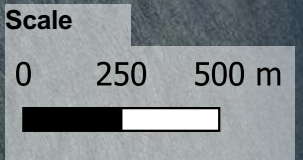
Project
2021s1471 - Hydrosphere - CVC CMP Stage 2 - 4

Client
Hydrosphere Consulting

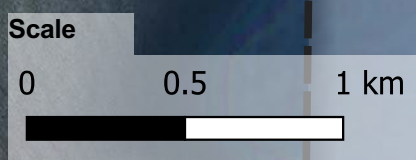
Data Sources:
 Roads © 2019 NSW Government
 DCDB (c) 2017 NSW Government
 Imagery (c) 2021 NSW 7Maps

Outside Mapping Extent

1









2




scientists and engineers
 jbpacific.com.au
 (07) 3085 7469
 477 Boundary Street
 Spring Hill
 QLD 4004

Date
29/08/2022

- Legend**
-  Mapping Extent
 -  Road Centrelines
 - 2123 SSP5 Inundation Extents**
 -  HHWSS
 -  10% AEP Storm Tide Level
 -  2% AEP Storm Tide Level
 -  1% AEP Storm Tide Level

HHWSS - High High Water Solstices Springs (highest water level from spring tides)
 AEP - Annual Exceedance Probability
 SSP - Shared Socioeconomic Pathway (climate change scenario)

PROJECT ID	2021s1471
AUTHOR	CS
LAST MODIFIED	29/08/2022
VERSION	1

JBPACIFIC does not warrant the accuracy or completeness of the information displayed in this map. Any person using it does so at their own risk. JBPACIFIC shall bear no responsibility or liability for any errors, faults, defects, or omissions in the information.

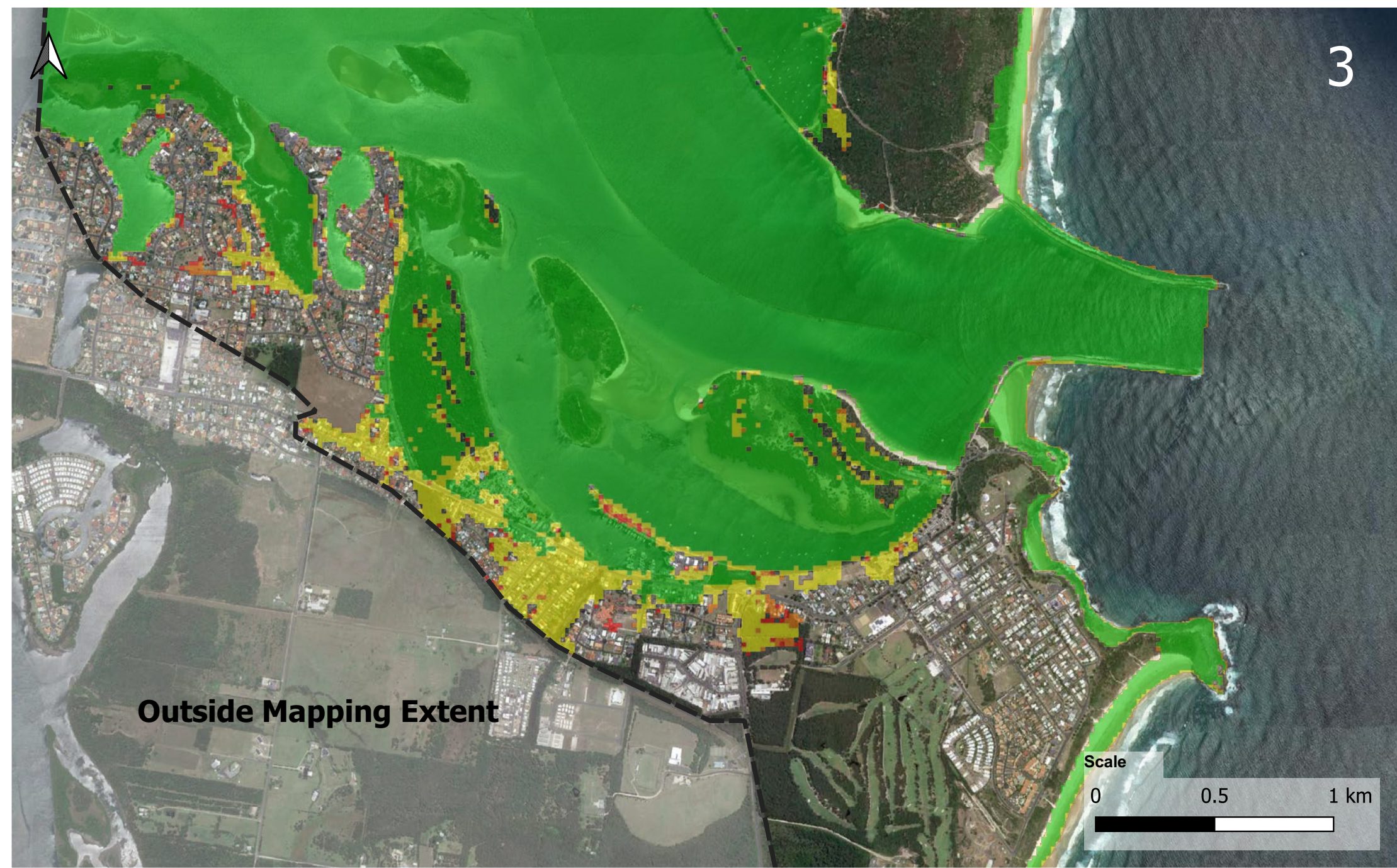
Filename: N:\2021\Projects\2021s1471 - Hydrosphere - CVC CMP Stage 2-4\1_WIP\HM\Graphical\GIS\Projects\CLA Model Results_CS.qgz

Title
Clarence River Inundation Extents - 2123 SSP5

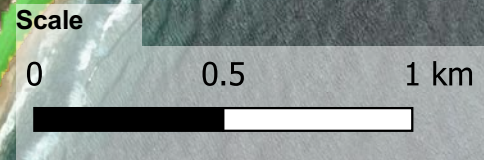
Project
2021s1471 - Hydrosphere - CVC CMP Stage 2 - 4

Client
Hydrosphere Consulting

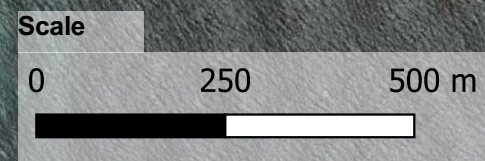
Data Sources:
 Roads © 2019 NSW Government
 DCDB (c) 2017 NSW Government
 Imagery (c) 2021 NSW 7Maps



Outside Mapping Extent



Outside Mapping Extent



jbpacific.com.au
 (07) 3085 7469
 477 Boundary Street
 Spring Hill
 QLD 4004



Date
29/08/2022

- Legend**
- Mapping Extent
 - Road Centrelines
 - 2123 SSP5 Inundation Extents**
 - HHWSS
 - 10% AEP Storm Tide Level
 - 2% AEP Storm Tide Level
 - 1% AEP Storm Tide Level

HHWSS - High High Water Solstices Springs (highest water level from spring tides)
 AEP - Annual Exceedance Probability
 SSP - Shared Socioeconomic Pathway (climate change scenario)

PROJECT ID	2021s1471
AUTHOR	CS
LAST MODIFIED	29/08/2022
VERSION	1

JBPACIFIC does not warrant the accuracy or completeness of the information displayed in this map. Any person using it does so at their own risk. JBPACIFIC shall bear no responsibility or liability for any errors, faults, defects, or omissions in the information.

Filename: N:\2021\Projects\2021s1471 - Hydrosphere - CVC CMP Stage 2-4\1_WIP\HM\Graphical\GIS\Projects\CLA Model Results_CS.gqz

Title
 Clarence River Inundation Extents - 2123 SSP5

Project
 2021s1471 - Hydrosphere - CVC CMP Stage 2 - 4

Client
 Hydrosphere Consulting

Data Sources:
 Roads © 2019 NSW Government
 DCDB (c) 2017 NSW Government
 Imagery (c) 2021 NSW 7Maps