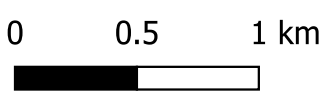


JBPacific (JBP)  
jbpacific.com.au  
+61 (0)420 644 348  
477 Boundary Street  
Spring Hill  
QLD 4004



**Date**  
13/09/2022

**Legend**

- Road Centrelines
- Present Day Inundation Extents**
- HHWSS
- 10% AEP Storm Tide Level
- 2% AEP Storm Tide Level
- 1% AEP Storm Tide Level

HHWSS - High High Water Solstices Springs  
AEP - Annual Exceedance Probability  
SSP - Shared Socioeconomic Pathway

PROJECT ID	2021s1471
AUTHOR	CS
LAST MODIFIED	13/09/2022
VERSION	1

JBPACIFIC does not warrant the accuracy or completeness of the information displayed in this map. Any person using it does so at their own risk. JBPACIFIC shall bear no responsibility or liability for any errors, faults, defects, or omissions in the information.

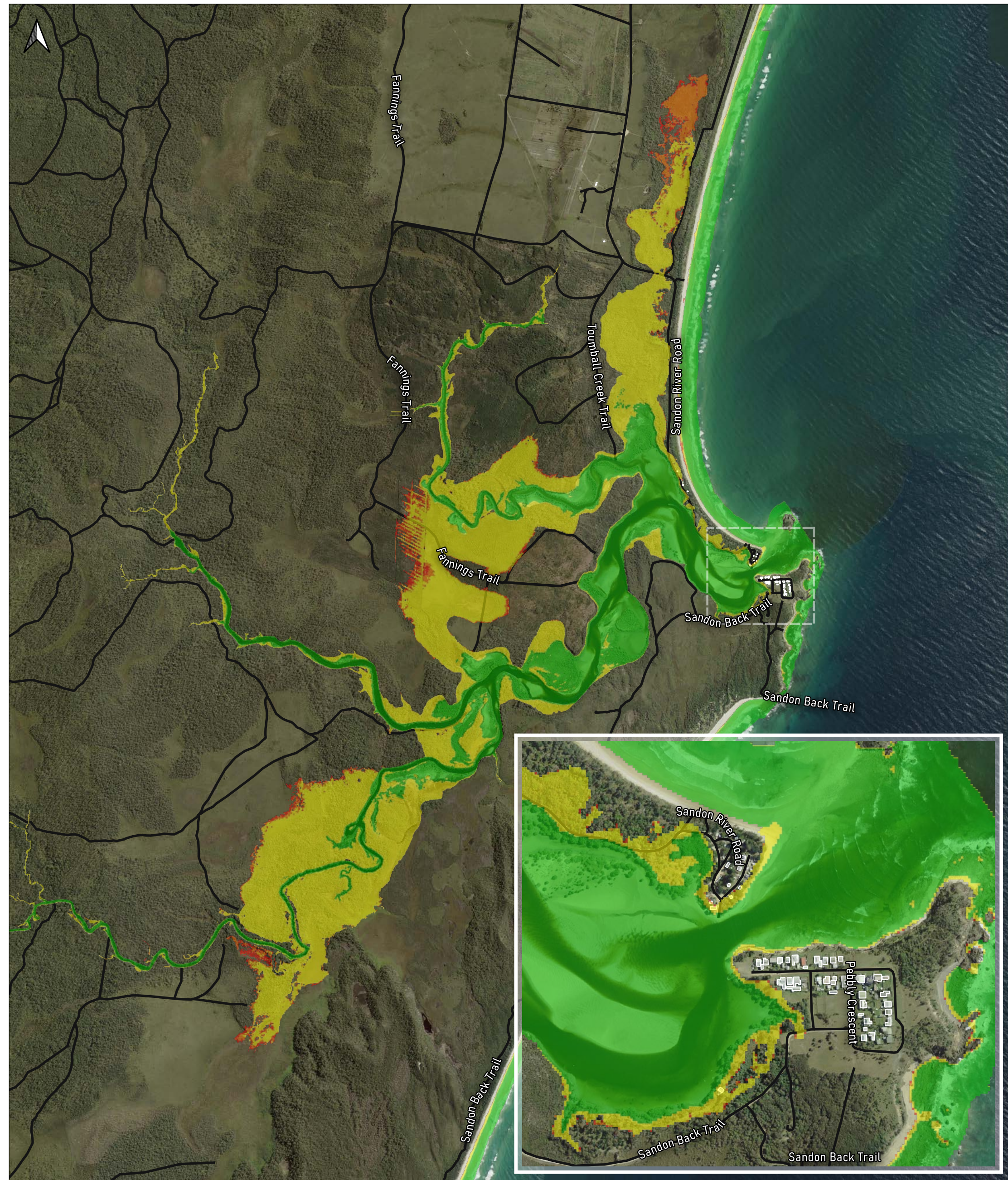
**Title**  
Sandon Inundation Extents - Present Day

**Project**  
2021s1471 - Hydrosphere - CVC CMP Stage 2 - 4

**Client**  
Hydrosphere Consulting

**Data Sources:**  
Roads © 2019 NSW Government  
DCDB (c) 2017 NSW Government  
Imagery (c) 2021 NSW SIX Maps



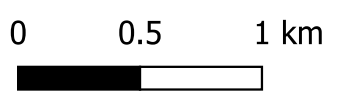


**JBP**  
scientists and engineers

JBPacific (JBP)  
jbpacific.com.au

+61 (0)420 644 348

477 Boundary Street  
Spring Hill  
QLD 4004



**Date**  
13/09/2022

**Legend**

— Road Centrelines

2043 SSP2 Inundation Extents

- HHWSS
- 10% AEP Storm Tide Level
- 2% AEP Storm Tide Level
- 1% AEP Storm Tide Level

HHWSS - High High Water Solstices Springs  
AEP - Annual Exceedance Probability  
SSP - Shared Socioeconomic Pathway

PROJECT ID	2021s1471
AUTHOR	CS
LAST MODIFIED	13/09/2022
VERSION	1

JBPACIFIC does not warrant the accuracy or completeness of the information displayed in this map. Any person using it does so at their own risk. JBPACIFIC shall bear no responsibility or liability for any errors, faults, defects, or omissions in the information.

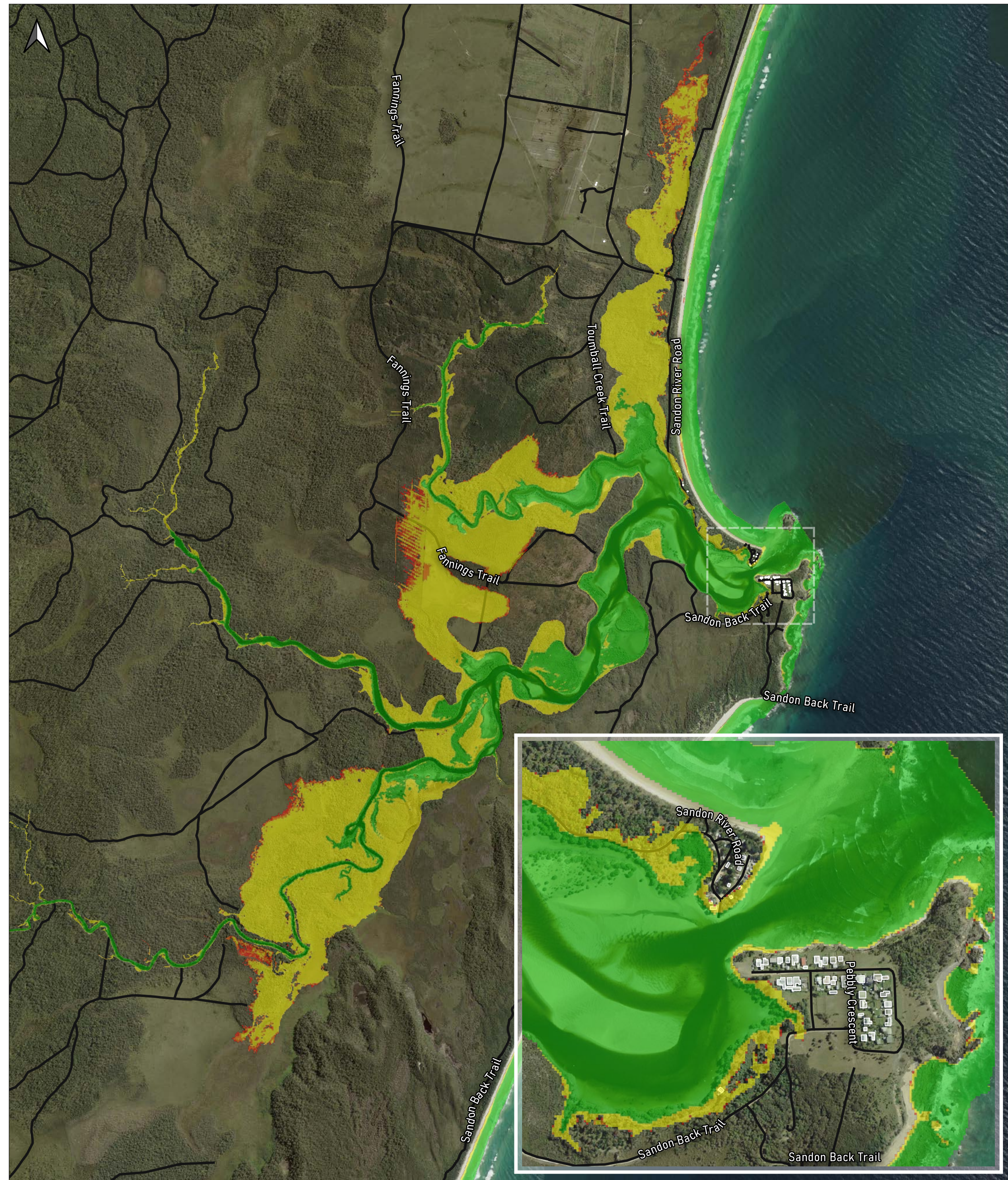
**Title**  
Sandon Inundation Extents - 2043 SSP2

**Project**  
2021s1471 - Hydrosphere - CVC CMP Stage 2 - 4

**Client**  
Hydrosphere Consulting

Data Sources:  
Roads © 2019 NSW Government  
DCDB (c) 2017 NSW Government  
Imagery (c) 2021 NSW SIX Maps



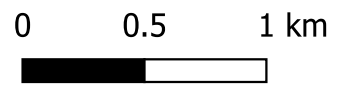


**JBP**  
scientists and engineers

JBPacific (JBP)  
jbpacific.com.au

+61 (0)420 644 348

477 Boundary Street  
Spring Hill  
QLD 4004



**Date**  
13/09/2022

**Legend**

— Road Centrelines

2043 SSP5 Inundation Extents

- HHWSS
- 10% AEP Storm Tide Level
- 2% AEP Storm Tide Level
- 1% AEP Storm Tide Level

HHWSS - High High Water Solstices Springs  
AEP - Annual Exceedance Probability  
SSP - Shared Socioeconomic Pathway

PROJECT ID	2021s1471
AUTHOR	CS
LAST MODIFIED	13/09/2022
VERSION	1

JBPACIFIC does not warrant the accuracy or completeness of the information displayed in this map. Any person using it does so at their own risk. JBPACIFIC shall bear no responsibility or liability for any errors, faults, defects, or omissions in the information.

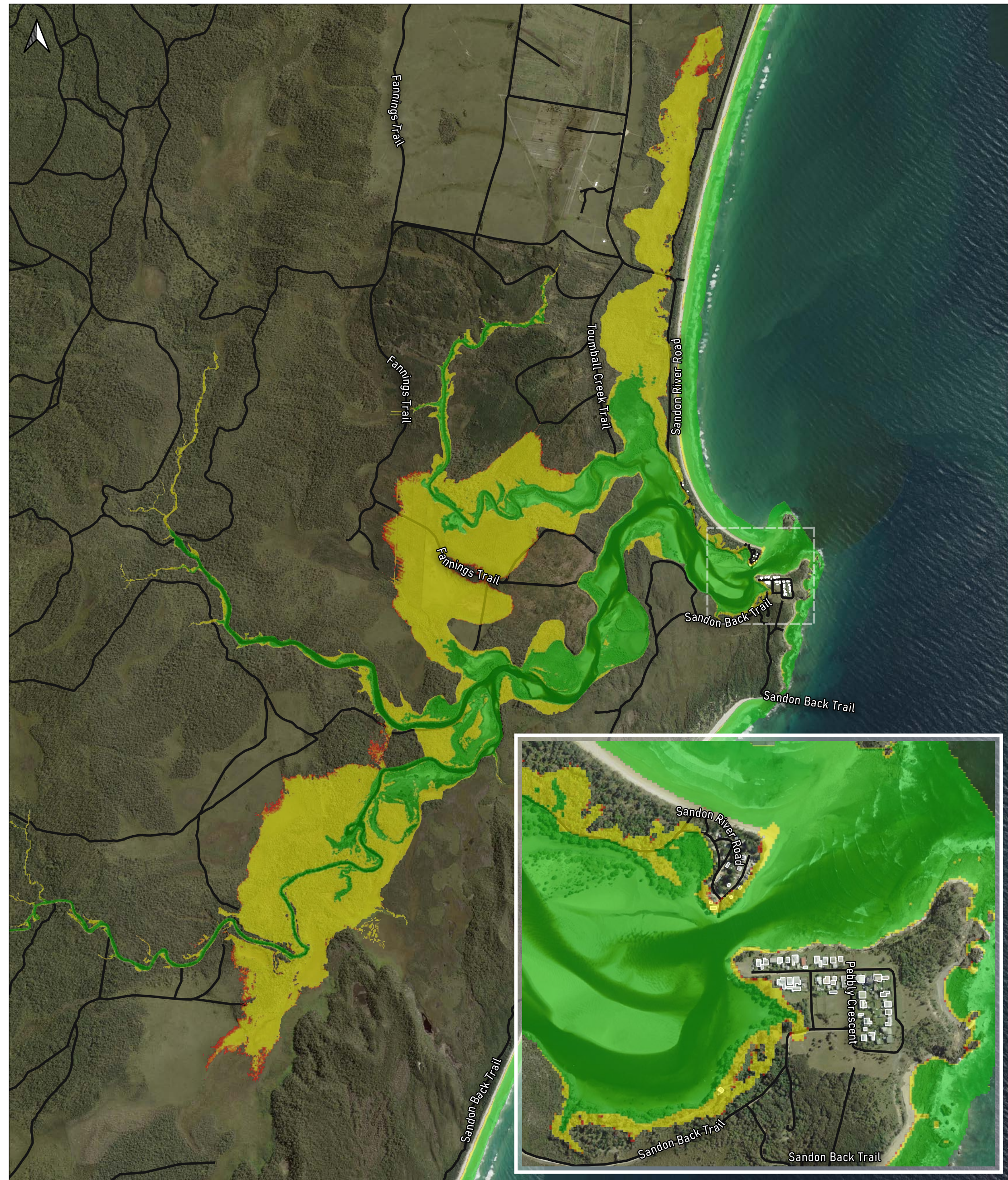
**Title**  
Sandon Inundation Extents - 2043 SSP5

**Project**  
2021s1471 - Hydrosphere - CVC CMP Stage 2 - 4

**Client**  
Hydrosphere Consulting

Data Sources:  
Roads © 2019 NSW Government  
DCDB (c) 2017 NSW Government  
Imagery (c) 2021 NSW SIX Maps



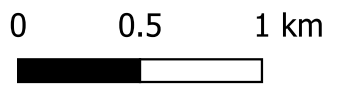


**JBP**  
scientists and engineers

JBPacific (JBP)  
jbPacific.com.au

+61 (0)420 644 348

477 Boundary Street  
Spring Hill  
QLD 4004



**Date**  
13/09/2022

**Legend**

— Road Centrelines

2073 SSP2 Inundation Extents

- HHWSS
- 10% AEP Storm Tide Level
- 2% AEP Storm Tide Level
- 1% AEP Storm Tide Level

HHWSS - High High Water Solstices Springs  
AEP - Annual Exceedance Probability  
SSP - Shared Socioeconomic Pathway

PROJECT ID	2021s1471
AUTHOR	CS
LAST MODIFIED	13/09/2022
VERSION	1

JBPACIFIC does not warrant the accuracy or completeness of the information displayed in this map. Any person using it does so at their own risk. JBPACIFIC shall bear no responsibility or liability for any errors, faults, defects, or omissions in the information.

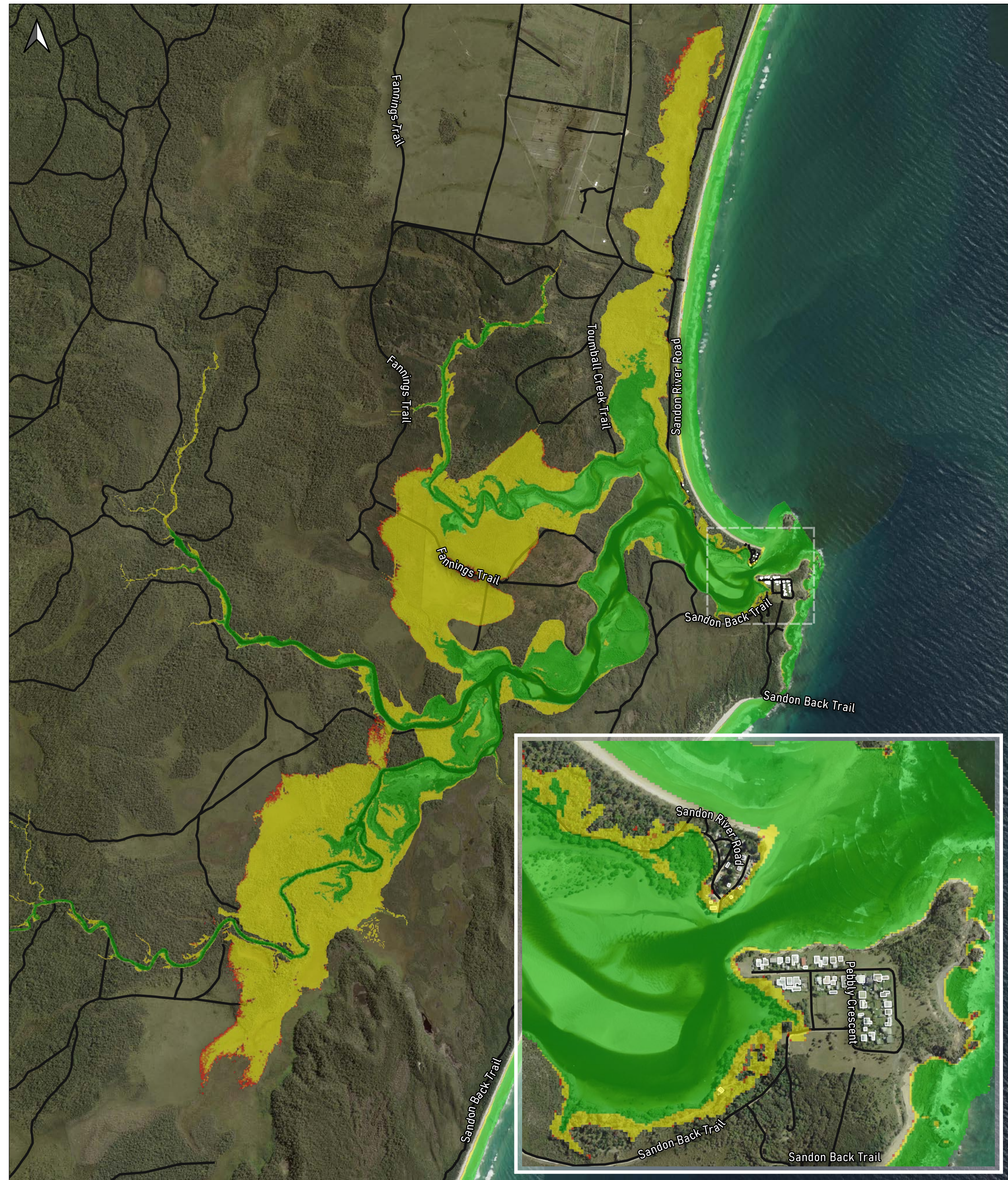
**Title**  
Sandon Inundation Extents - 2073 SSP2

**Project**  
2021s1471 - Hydrosphere - CVC CMP Stage 2 - 4

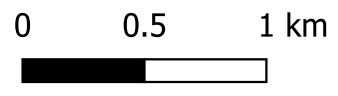
**Client**  
Hydrosphere Consulting

Data Sources:  
Roads © 2019 NSW Government  
DCDB (c) 2017 NSW Government  
Imagery (c) 2021 NSW SIX Maps





JBPacific (JBP)  
jbpacific.com.au  
+61 (0)420 644 348  
477 Boundary Street  
Spring Hill  
QLD 4004



**Date**  
13/09/2022

**Legend**

- Road Centrelines
- 2073 SSP5 Inundation Extents**
- HHWSS
- 10% AEP Storm Tide Level
- 2% AEP Storm Tide Level
- 1% AEP Storm Tide Level

HHWSS - High High Water Solstices Springs  
AEP - Annual Exceedance Probability  
SSP - Shared Socioeconomic Pathway

PROJECT ID	2021s1471
AUTHOR	CS
LAST MODIFIED	13/09/2022
VERSION	1

JBPACIFIC does not warrant the accuracy or completeness of the information displayed in this map. Any person using it does so at their own risk. JBPACIFIC shall bear no responsibility or liability for any errors, faults, defects, or omissions in the information.

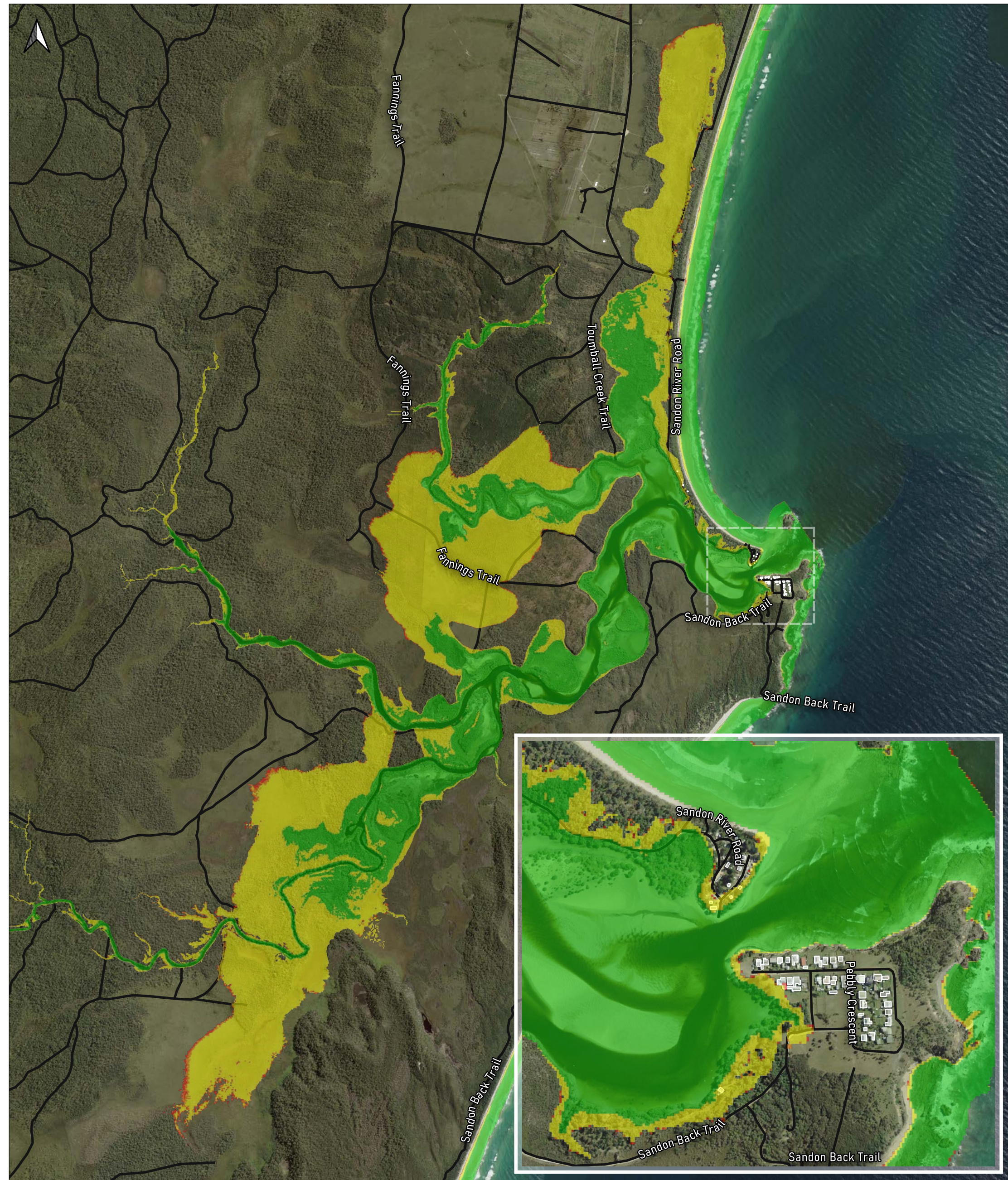
**Title**  
Sandon Inundation Extents - 2073 SSP5

**Project**  
2021s1471 - Hydrosphere - CVC CMP Stage 2 - 4

**Client**  
Hydrosphere Consulting

Data Sources:  
Roads © 2019 NSW Government  
DCDB (c) 2017 NSW Government  
Imagery (c) 2021 NSW SIX Maps



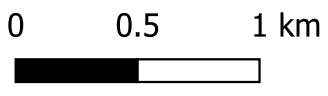


**JBP**  
scientists and engineers

JBPacific (JBP)  
jbpcific.com.au

+61 (0)420 644 348

477 Boundary Street  
Spring Hill  
QLD 4004



**Date**  
13/09/2022

**Legend**

— Road Centrelines

2123 SSP2 Inundation Extents

- HHWSS
- 10% AEP Storm Tide Level
- 2% AEP Storm Tide Level
- 1% AEP Storm Tide Level

HHWSS - High High Water Solstices Springs  
AEP - Annual Exceedance Probability  
SSP - Shared Socioeconomic Pathway

PROJECT ID	2021s1471
AUTHOR	CS
LAST MODIFIED	13/09/2022
VERSION	1

JBPACIFIC does not warrant the accuracy or completeness of the information displayed in this map. Any person using it does so at their own risk. JBPACIFIC shall bear no responsibility or liability for any errors, faults, defects, or omissions in the information.

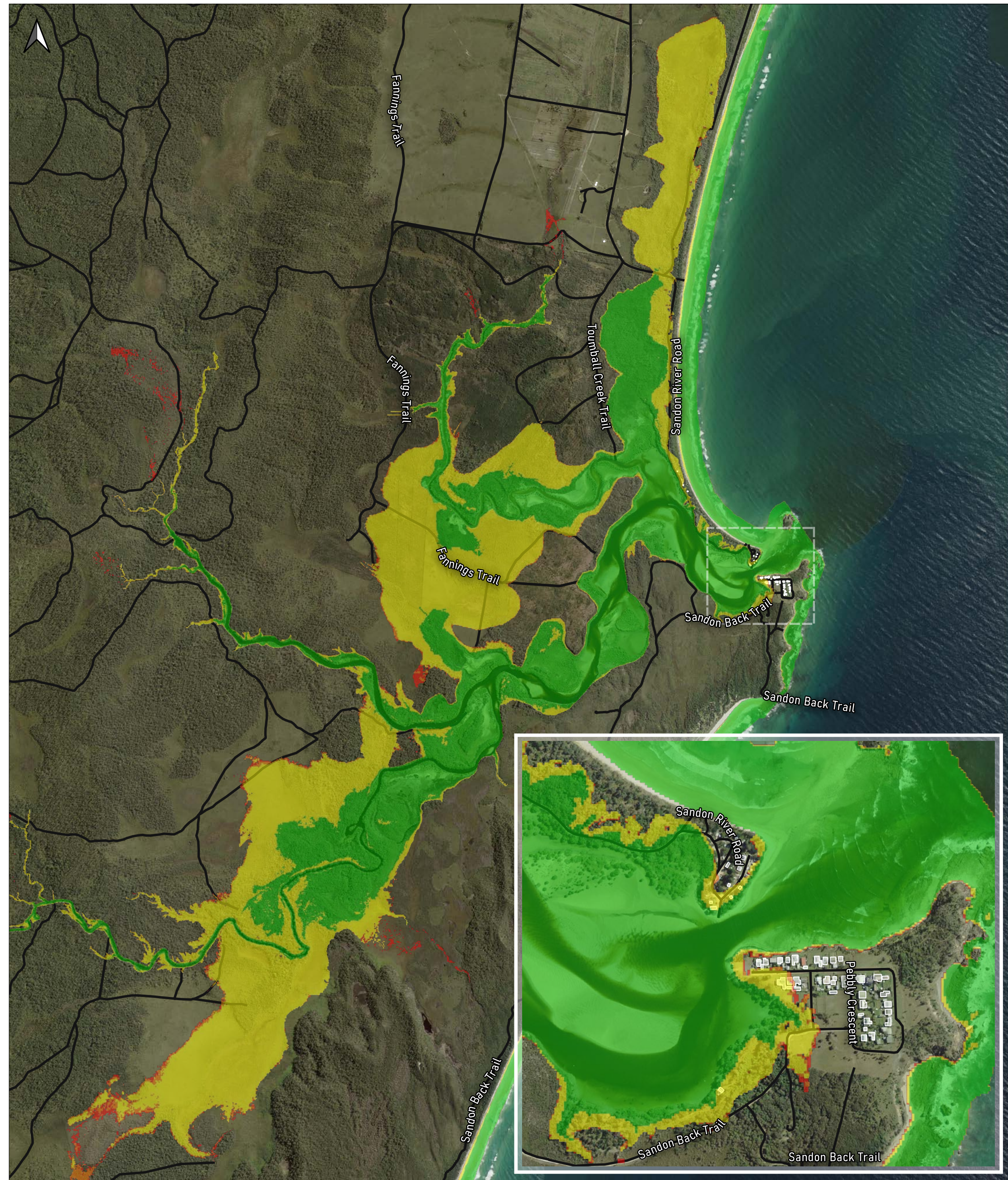
**Title**  
Sandon Inundation Extents - 2123 SSP2

**Project**  
2021s1471 - Hydrosphere - CVC CMP Stage 2 - 4

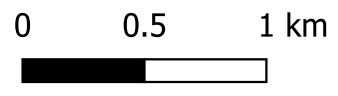
**Client**  
Hydrosphere Consulting

Data Sources:  
Roads © 2019 NSW Government  
DCDB (c) 2017 NSW Government  
Imagery (c) 2021 NSW SIX Maps





JBPacific (JBP)  
jbpacific.com.au  
+61 (0)420 644 348  
477 Boundary Street  
Spring Hill  
QLD 4004



Date  
13/09/2022

**Legend**

- Road Centrelines
- 2123 SSP5 Inundation Extents**
- HHWSS
- 10% AEP Storm Tide Level
- 2% AEP Storm Tide Level
- 1% AEP Storm Tide Level

HHWSS - High High Water Solstices Springs  
AEP - Annual Exceedance Probability  
SSP - Shared Socioeconomic Pathway

PROJECT ID	2021s1471
AUTHOR	CS
LAST MODIFIED	13/09/2022
VERSION	1

JBPACIFIC does not warrant the accuracy or completeness of the information displayed in this map. Any person using it does so at their own risk. JBPACIFIC shall bear no responsibility or liability for any errors, faults, defects, or omissions in the information.

**Title**

Sandon Inundation Extents - 2123 SSP5

**Project**

2021s1471 - Hydrosphere - CVC CMP Stage 2 - 4

**Client**

Hydrosphere Consulting

Data Sources:  
Roads © 2019 NSW Government  
DCDB (c) 2017 NSW Government  
Imagery (c) 2021 NSW SIX Maps