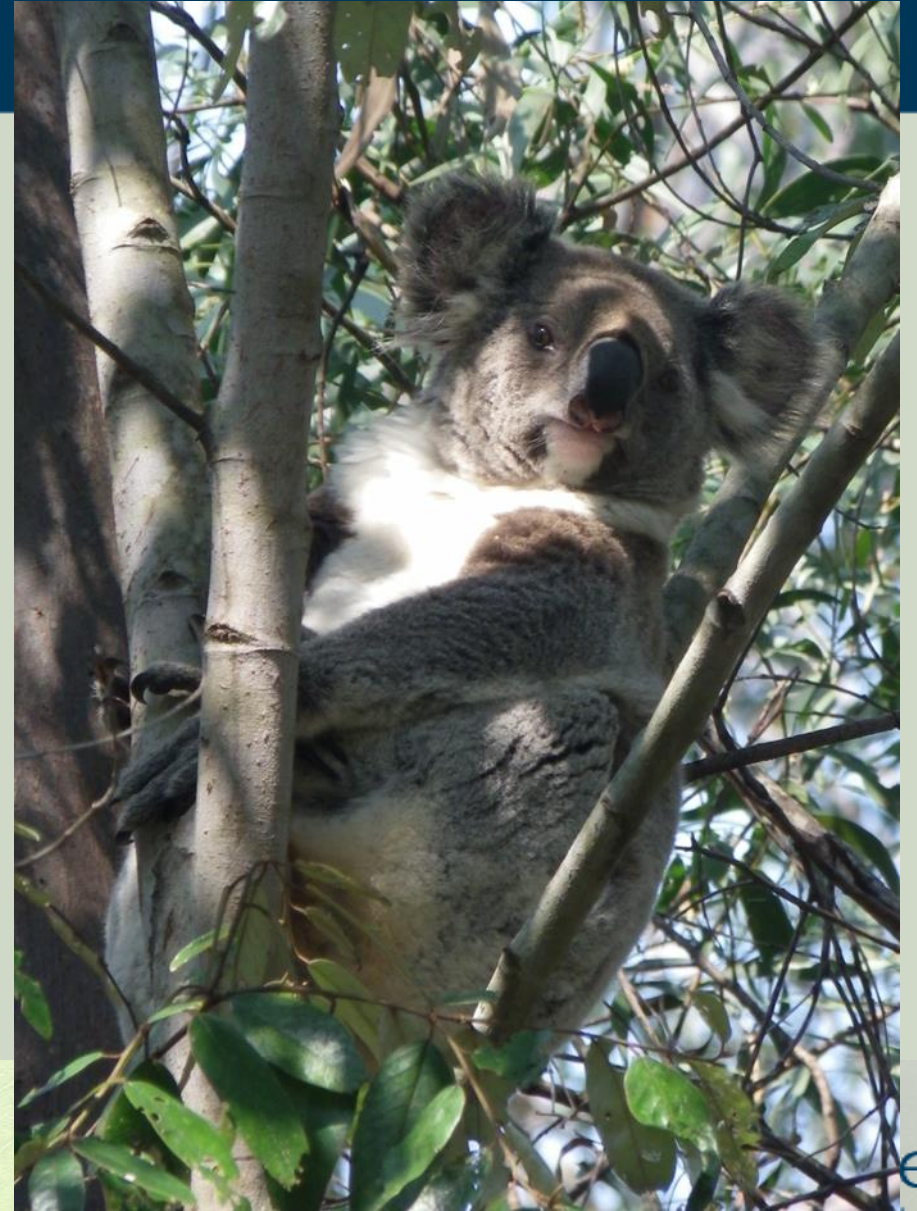




Koala management in the Clarence



Protect habitat

1. Through the development application process
2. Supporting landholders to conserve habitat on private land

Main threats: Habitat clearing, vehicle strike, dog attack, fire, disease



Legislation - *Phascolarctos cinereus*

Koala management governed by Federal and State legislation and local planning instruments and policies:

1. Commonwealth listed as endangered under the Environment Protection and Biodiversity Conservation Act 1999
2. Listed as endangered in NSW under the Biodiversity Conservation Act 2016
3. State Environmental Planning Policies (SEPP 2020, SEPP 2021)
4. Council's Development Control Plans
5. Council's Koala Plan of Management for Ashby, Woombah & Iluka

Planning Instruments – State Environmental Planning Policies SEPP

The Koala Habitat Protection SEPP 2021 (Environmental Planning and Assessment Act 1979) applies in 83 LGA's NSW which includes CVC (*does not apply to rural zoned land*). The principles of the Koala SEPP 2021 are to:

- Help reverse the decline of koala populations by ensuring koala habitat is properly considered during the development assessment process.
- Provide a process for councils to strategically manage koala habitat through the development of koala plans of management.

The Koala Habitat Protection SEPP 2020 applies on Land zoned RU1 Primary Production, RU2 Rural Landscape or RU3 Forestry (old SEPP 44)

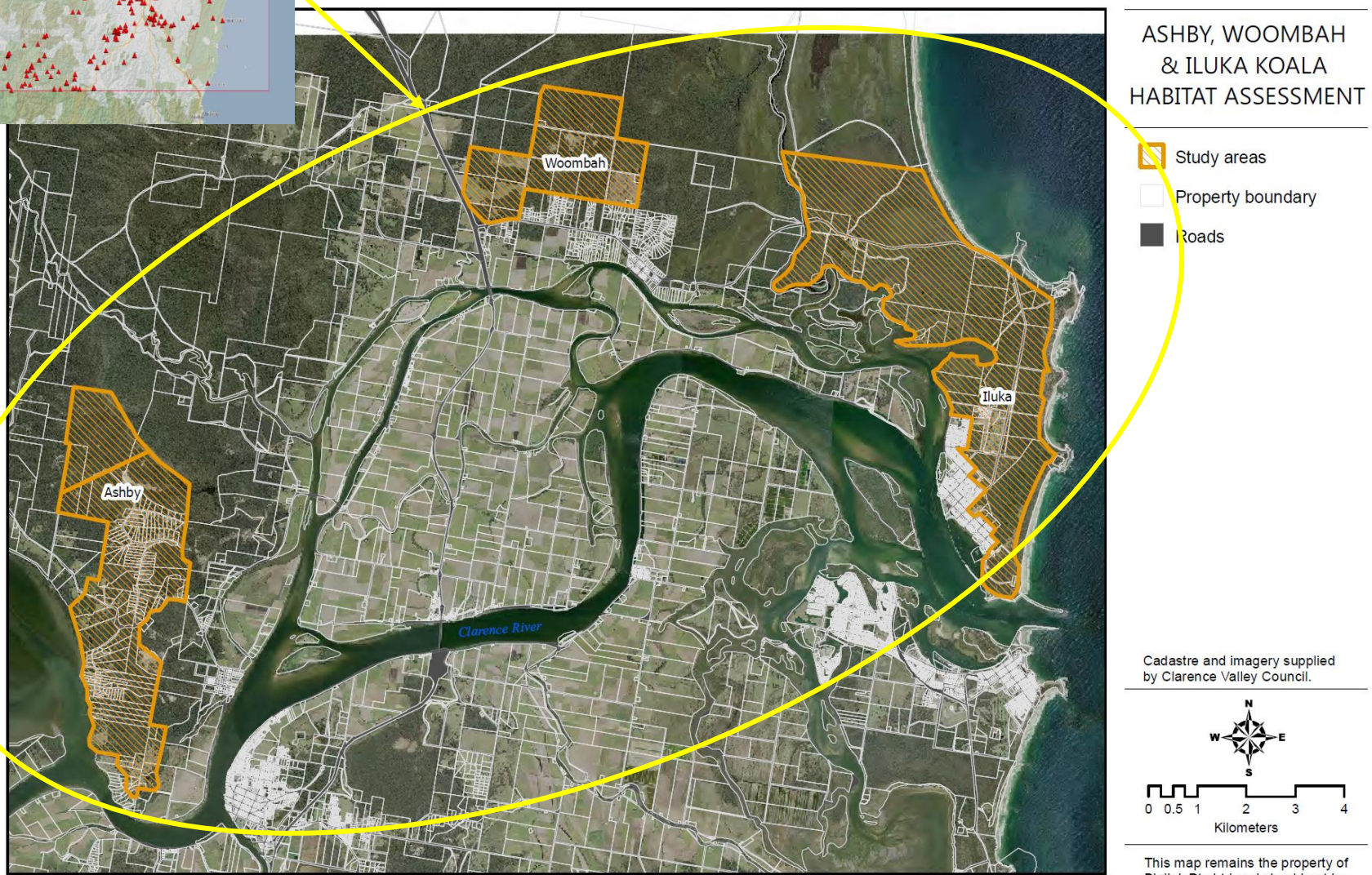
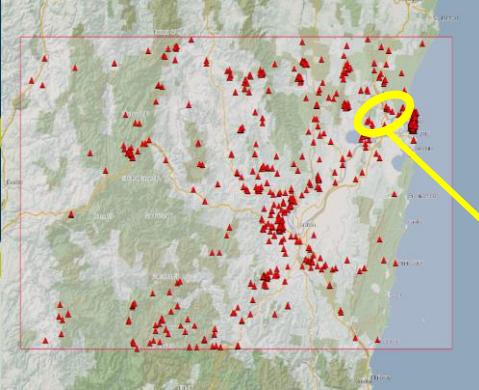
Koala Plan Of Management

- Developed under SEPP 44
- Never adopted by State Government
- Adopted by Council in 2016
- Controls added to relevant DCP's
- Still an active document in the DA process
- Adds an extra layer of protection for habitat
- CVC does not have an LGA wide KPOM
- Uncertainty of government direction with 2 SEPPS with 'codes' still not clear on Rural Lands
- Isn't always the holy grail for koala protection

Comprehensive Koala Plan of Management *for the Ashby, Woombah & Iluka localities in the Clarence Valley LGA*



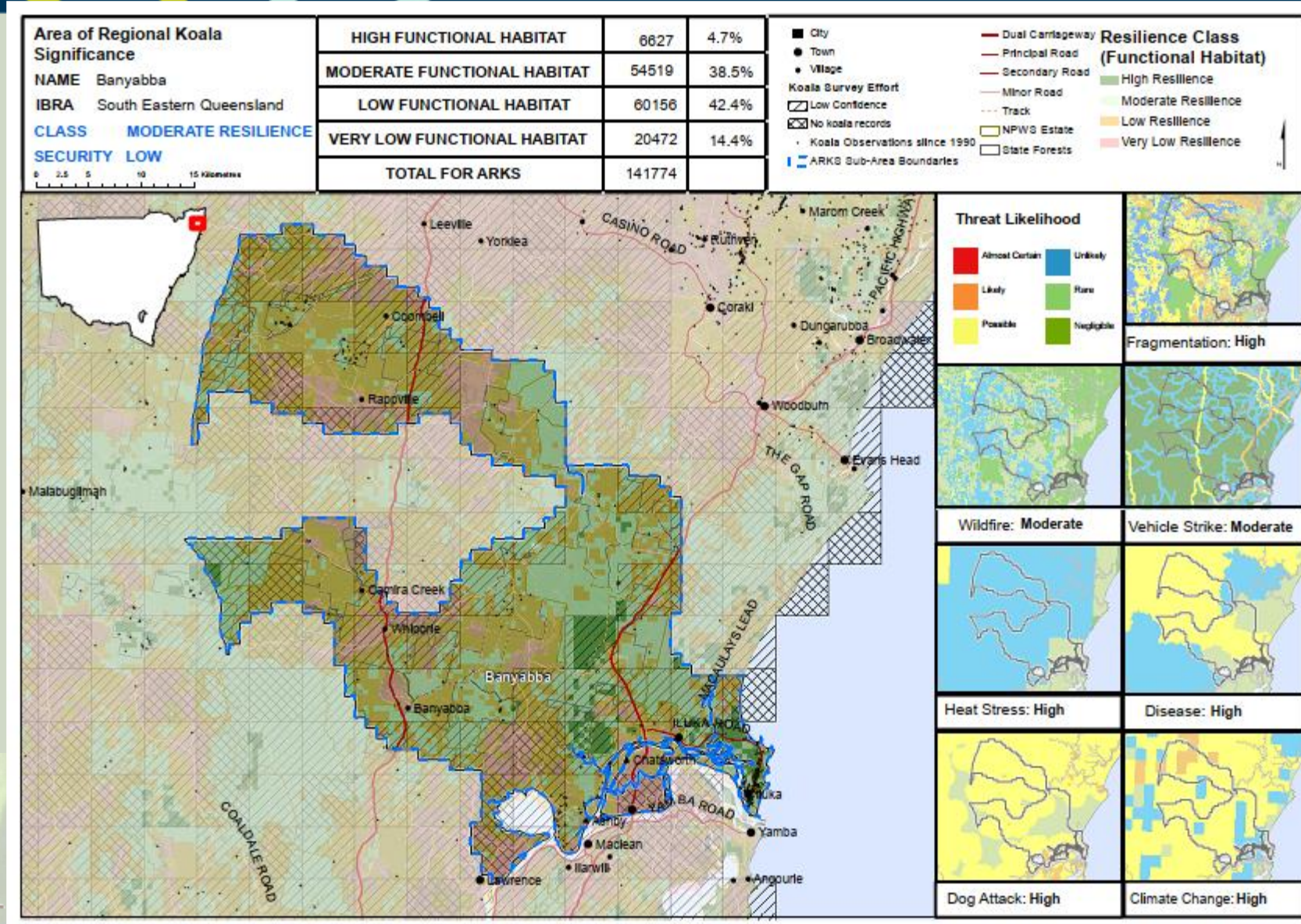
KPOM Area



1. Koalas are protected on rural lands under SEPP 2020 (SEPP 44) and on residential lands under SEPP2021, and our KPOM (if in Ashby, Iluka & Woombah).
2. All DA's are assessed for any clearing of koala habitat under our DCP's - and avoid, minimise and offset is the hierarchy of approval.
3. The majority of rural land clearing does not come under Council jurisdiction, but rather Local Land Services.

- The NSW Koala Strategy is a non-statutory policy document outlining actions the NSW Government will take to achieve its long-term goal of doubling koala numbers by 2050. \$193million until 2026
- DPE Recently announced funding for 6 northern NSW councils (Tweed, Byron, Kyogle, Richmond, Lismore, Ballina) to enable the development of a Regional Koala Conservation Strategy
- CVC was not one of the councils included in this
- CVC historically not considered a 'stronghold' for koalas

Areas of Regional Koala Significance - ARKS



Koala strategy

To the north
considered
higher densities
of koalas =
strongholds =
focus of the
strategy

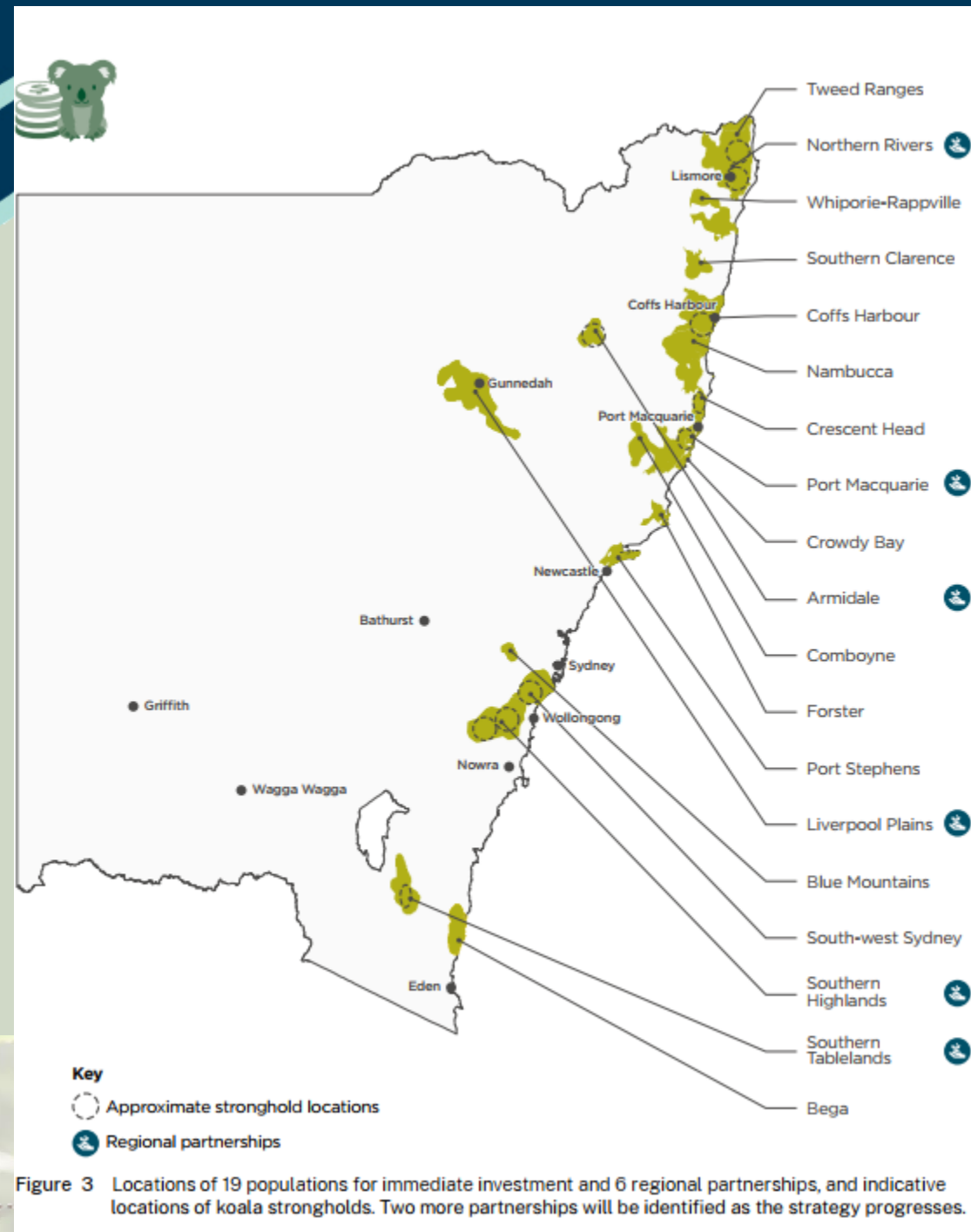


Figure 3 Locations of 19 populations for immediate investment and 6 regional partnerships, and indicative locations of koala strongholds. Two more partnerships will be identified as the strategy progresses.



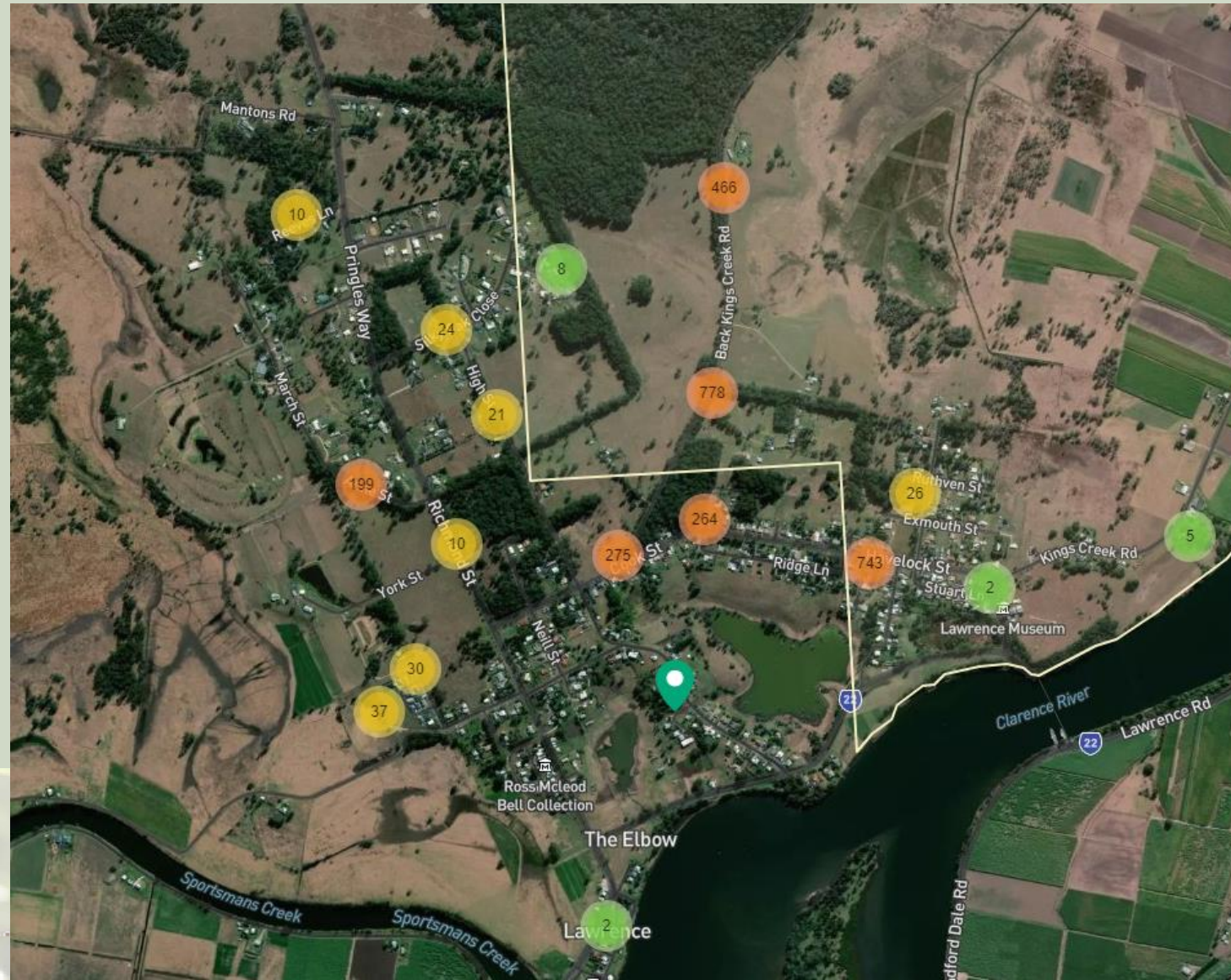
Koala Strategy Funding for the Clarence

We will receive Strategy funding for;

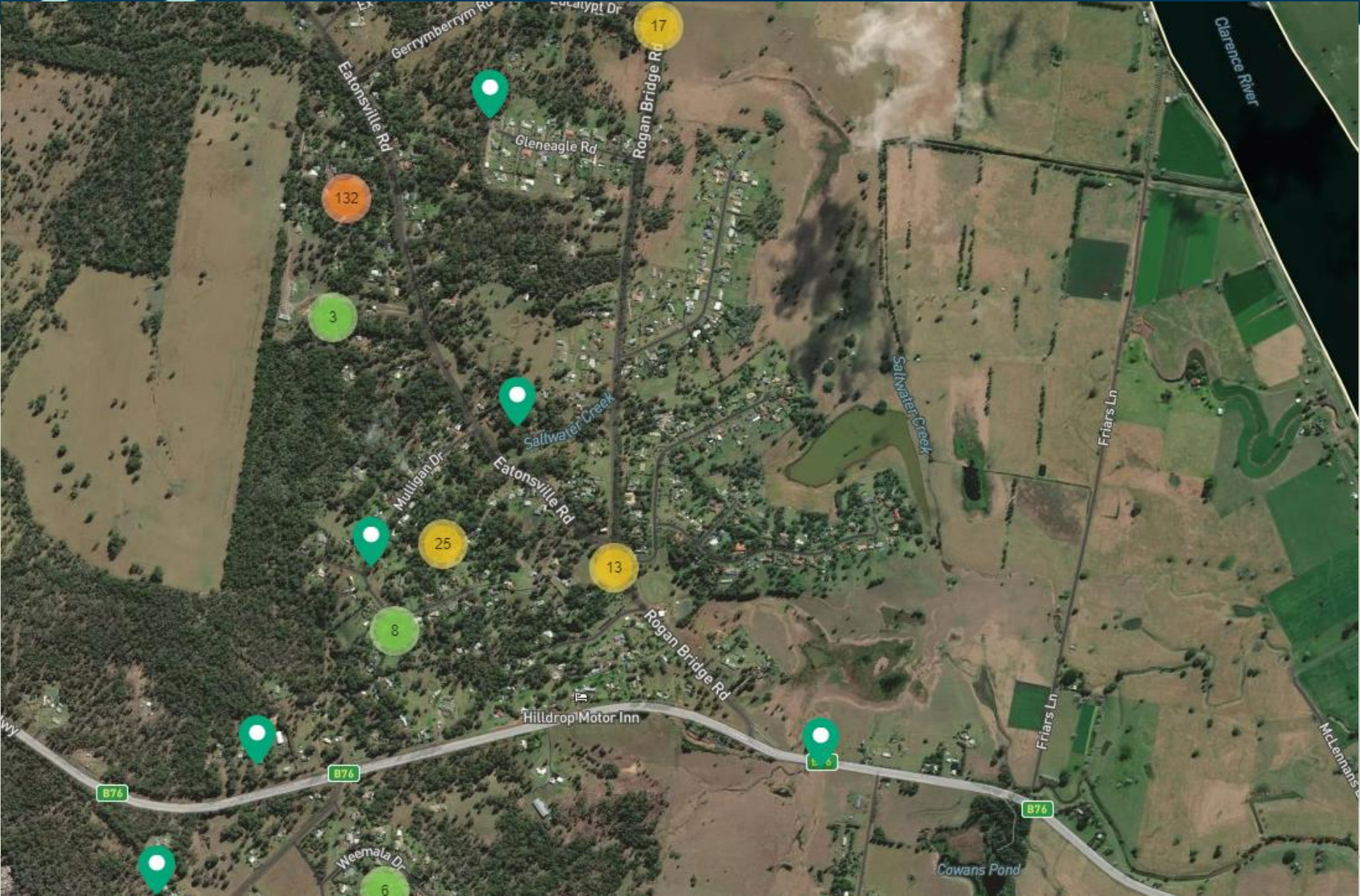
1. Koala habitat mapping for Lawrence & Waterview Heights ‘Areas of Regional Koala Significance’. These areas are also under development pressure. Mapping will be incorporated into the DCP
 - *The objective is to deliver koala habitat maps in key priority areas that provide council with local scale strategic information for future planning, protection and management of important areas for koalas (DCPs) and provide a basis for a future KPOM*
2. Habitat restoration (via Envite)
3. Genoptic moveable road signs to reduce car strike

- Koala register – developed out of a koala & emu Environmental Trust grant that concluded in 2020.
- Anyone can register sightings and then we upload to Bionet
- Through the register we've been able to show we have viable koala populations that have that **generational persistence** (koalas with joeys) and we have a community that is very keen on assisting where they can.

Lawrence



Waterview Heights



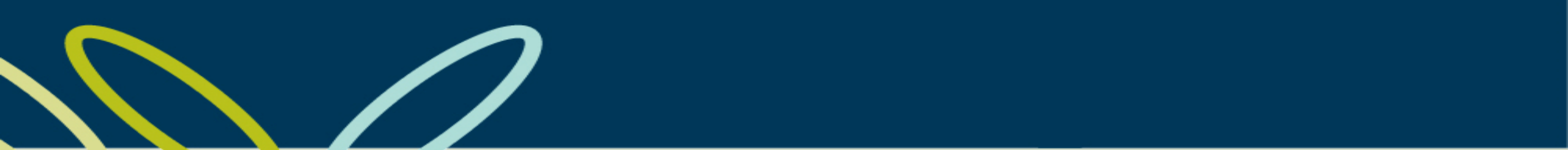


Anything else?

Clarence Valley Koala Working Group – community based group, supported by Council, Envite, DPE, and is focussed on replanting koala habitat across the valley.

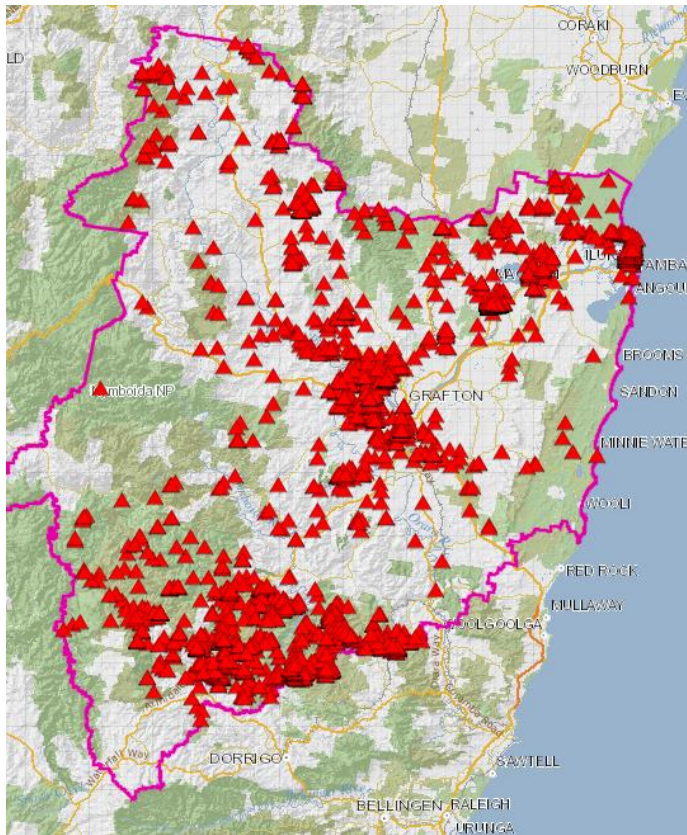
Additional funding for landholders is something that we're chasing through the BCT – meaningful conservation projects – haven't had many state government incentives for private landholders to conserve habitat

CVC submissions – parliamentary enquiries etc – because getting our koalas and their unique habitat requirements here in the Clarence recognised has been difficult



Bionet koala sitings in the Clarence

Koala sitings through time



Koala sitings since 2018

